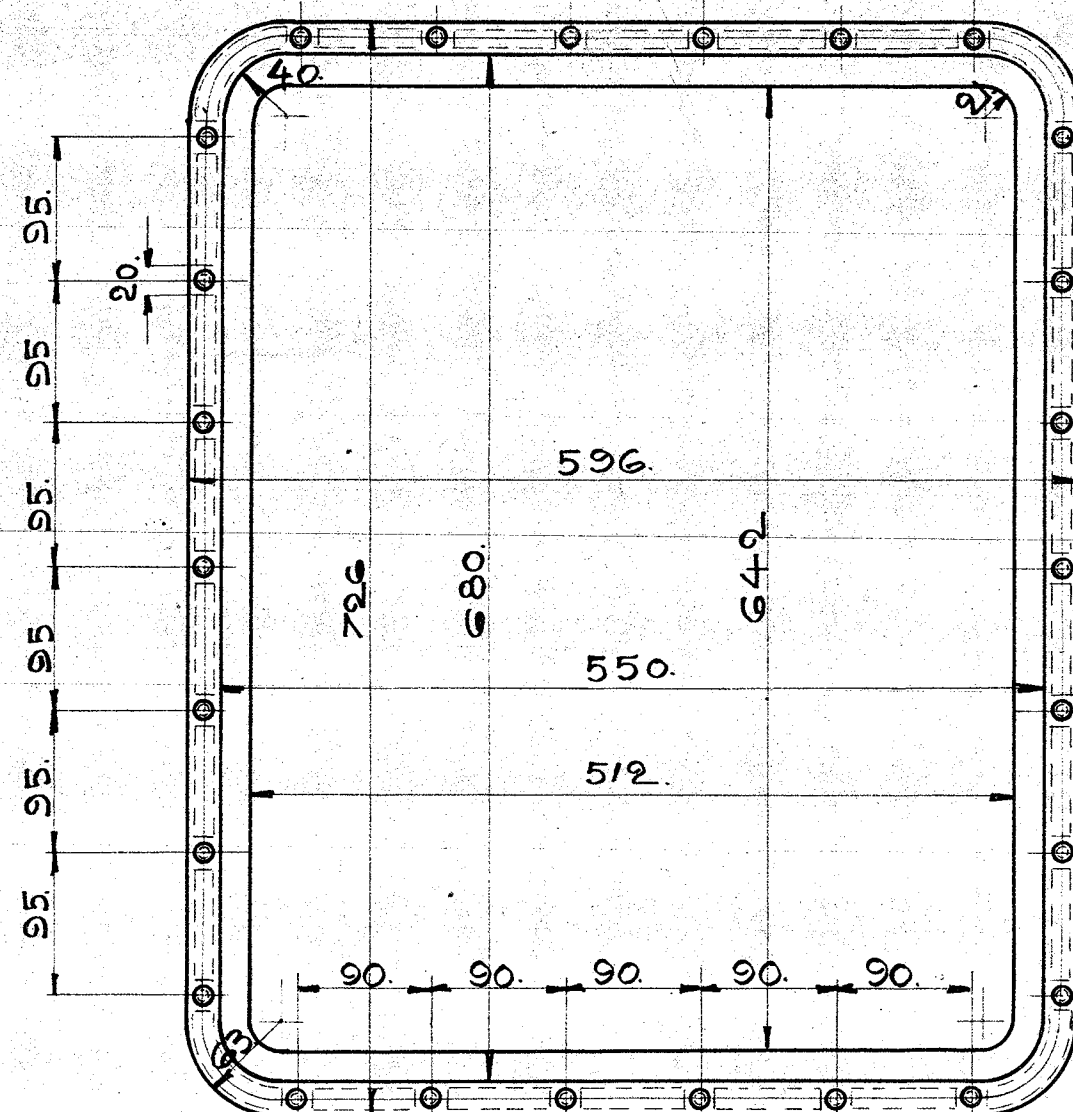
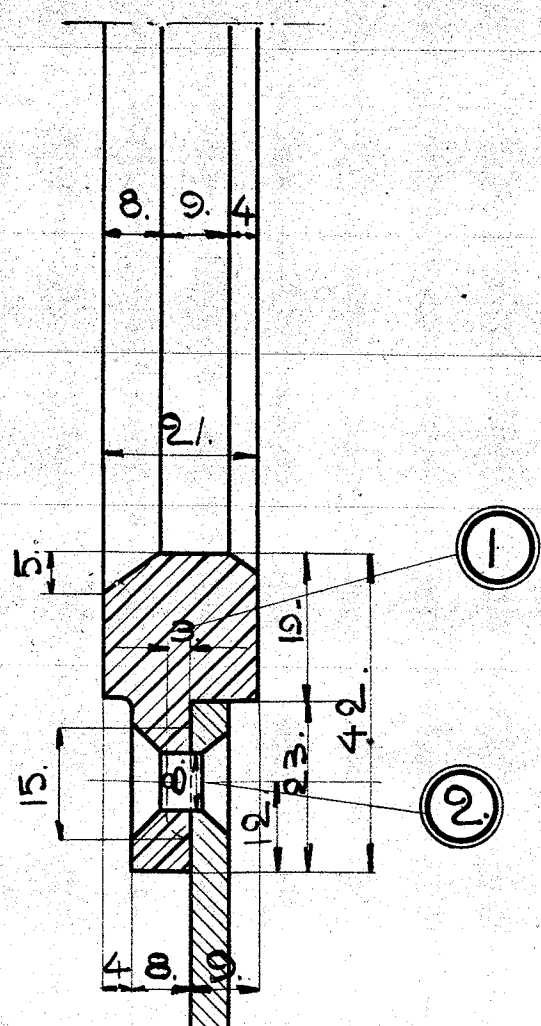
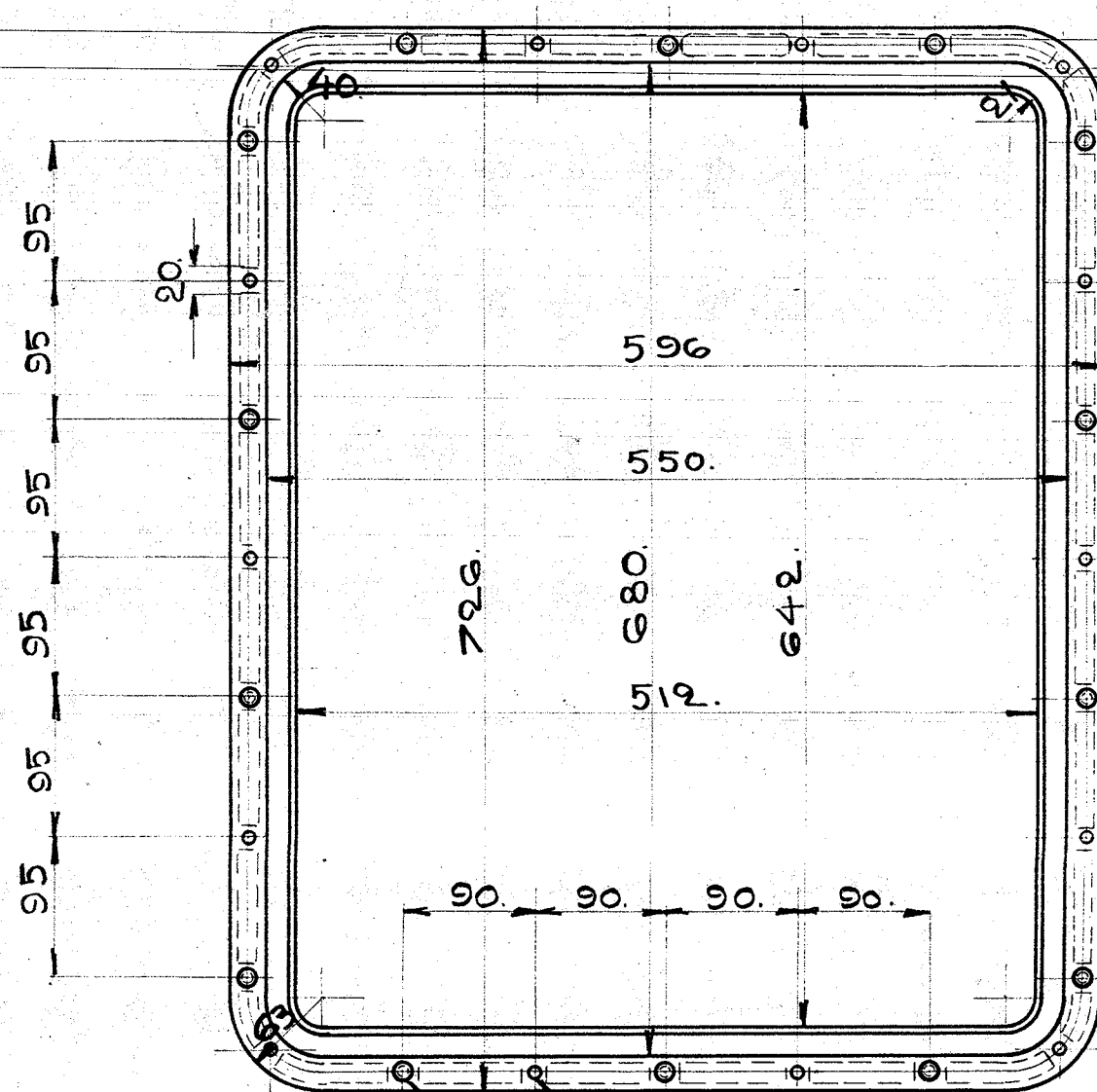
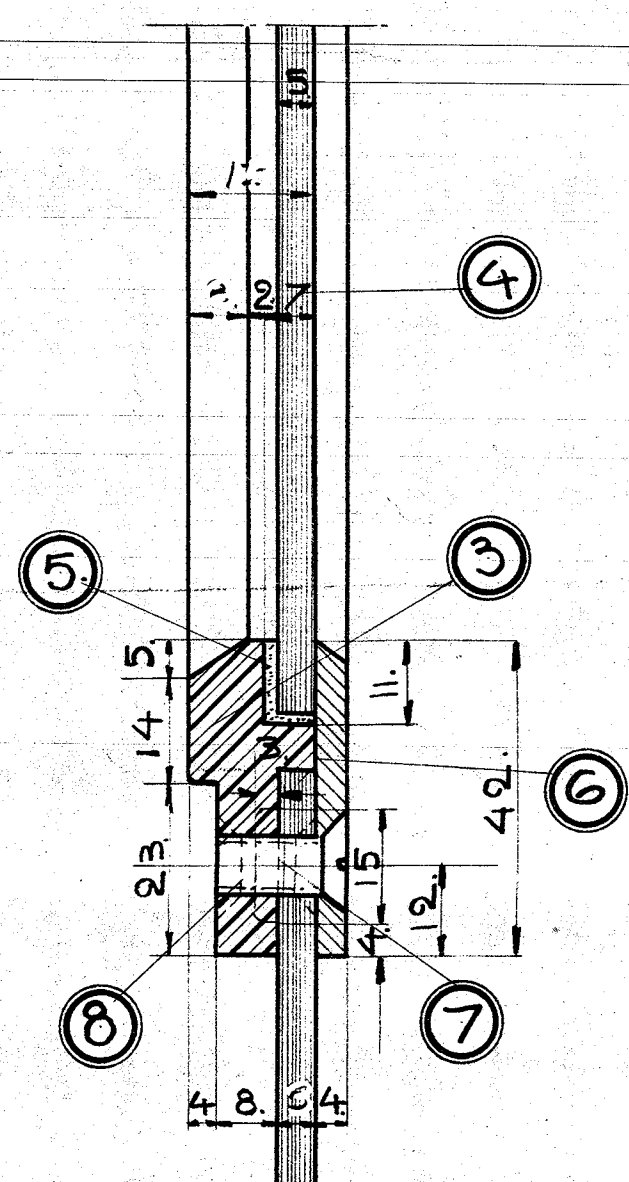


A.

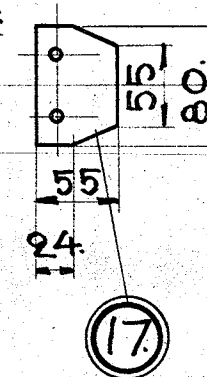
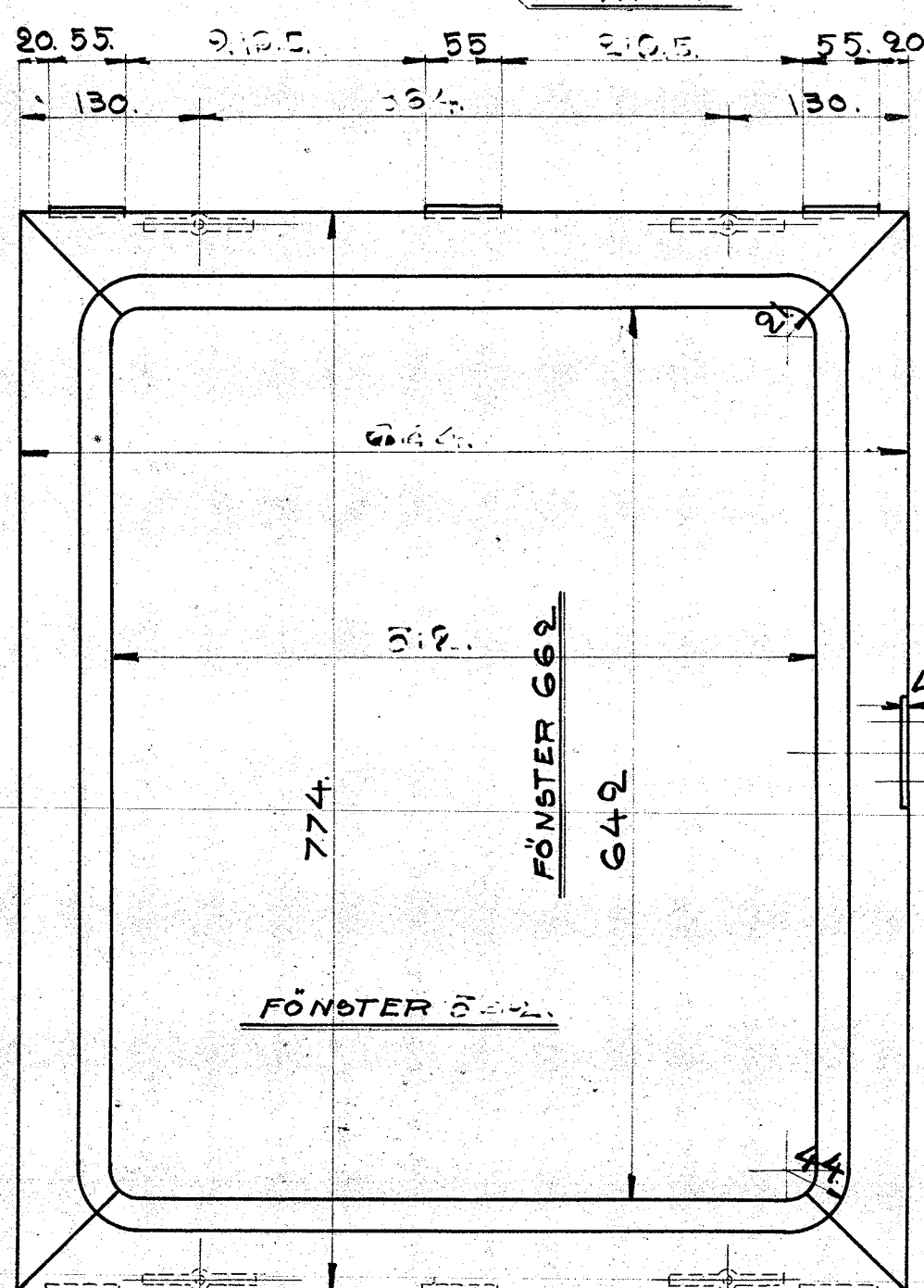
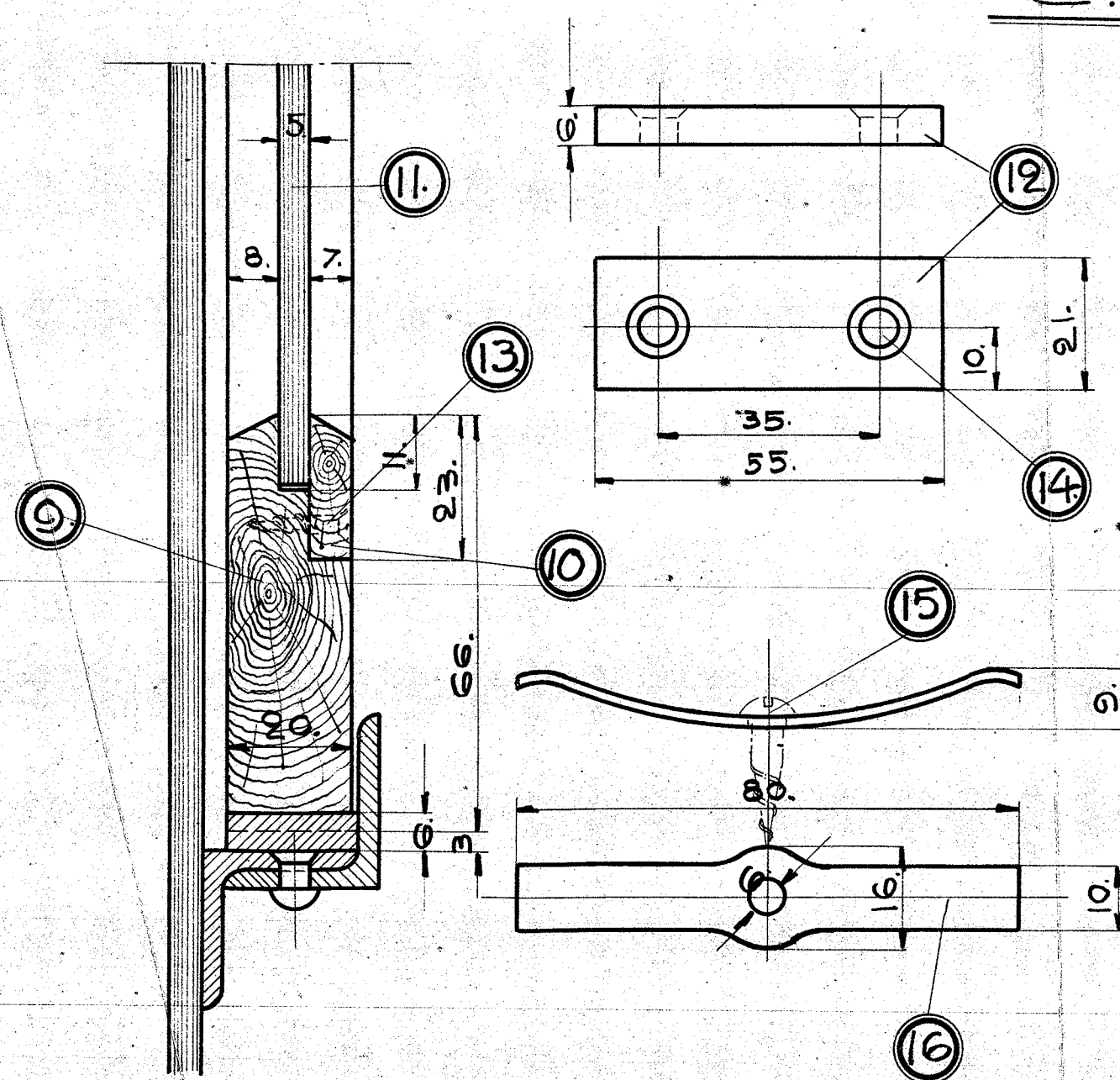


	DET N <sup>o</sup>	MOD N <sup>o</sup>	ST. MAT.	BENÄMNING	ANM
FIG. A	1	26886	2	J.V. RAM.	
	2		52	SMJ. NIT 2 1/4.	
	3	26887	2	G.V. RAM.	
FIG. B	4		2	GLAS FÖNSTEN	662x532x5
	5		—	KITT. PACKNING	
	6		2	J.PLÅT RAM.	
	7		28	SMJ. SKRUF 5/16"	
	8		28	" NIT 8 1/4.	
	9		2	TEAK RAM.	
	10		2	" LIST	
	11		2.	GLAS FÖNSTEN	662x532x5
	12		12	SMJ. SLITSKENA	
	13		—	" TRÄSKRUF	EFTER BEHOV.
FIG. C.	14		28	" "	
	15		8	" "	
	16		8	STÅL FJÄDER.	
	17		2	J.PLÅT FÄSTE	80x55x4.



5/16 GGR.

8 1/2 M Nit.

[illegible]

**L.**

13285

TILL HYTTEN

SKALA  $\frac{1}{1} : \frac{1}{5}$

Month. 1. 24/4 1912  
J. E. Lassen