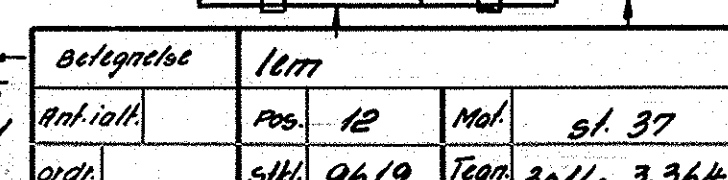
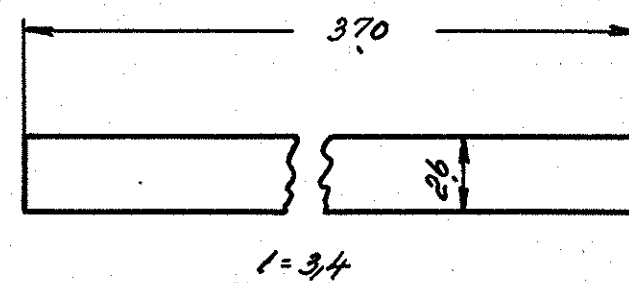


Udstrikt længde . 240

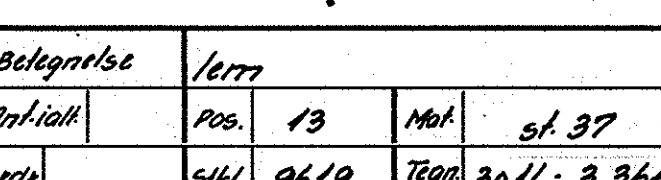
Beteckelse		bändjein			
Anf. i o. f.		Pos.	2	Mat.	sf. 37
ordr.		Sikl.	96/9	Tegn.	3014 - 3. 364



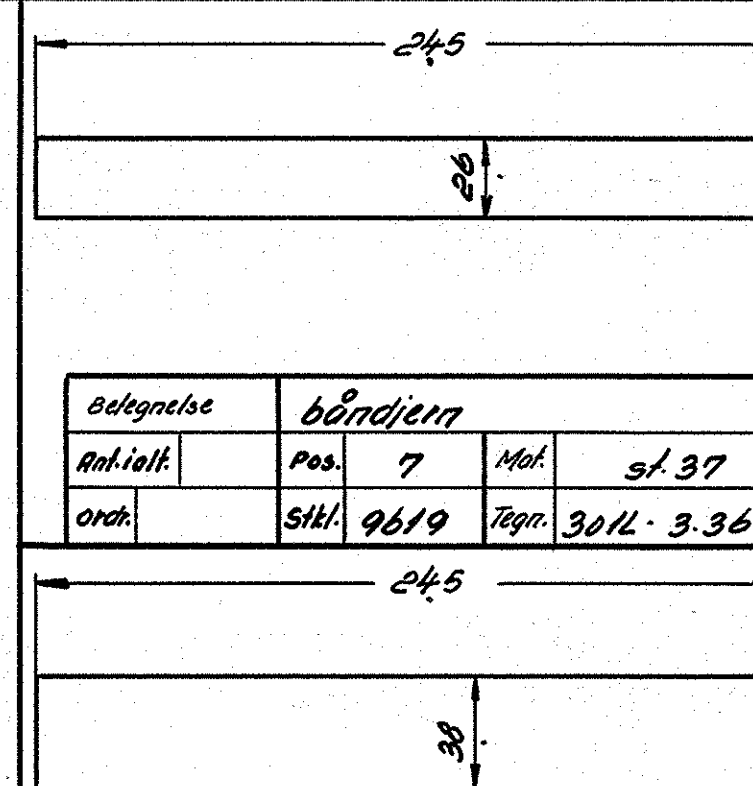
Udstrakt  
bredde: 221.



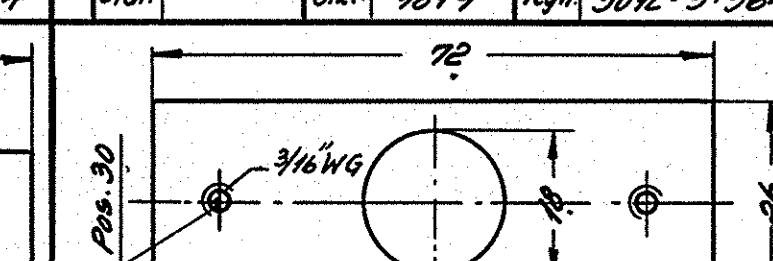
Belegelse		båndjern			
Antikalt.		Pos.	4	Mat.	st. 37
Indr.		Sikl.	9619	Tegn.	3016. 3.364



Belegnrse		lern			
Intialt		Pos.	13	Mat.	st. 37
nr.		6161	0610	TEAR	3011-386



Technical drawing of a rectangular plate. The drawing shows a rectangle with a horizontal dimension of 245 and a vertical dimension of 38. The dimensions are indicated by dimension lines with arrows. The number 245 is placed above the horizontal dimension line, and the number 38 is placed to the right of the vertical dimension line.



3/16" WG - huller optmæring

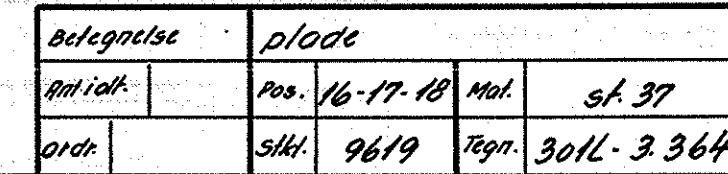
Technical drawing of a mechanical part, likely a bracket or support. It shows a side view with a vertical plate on the left and a horizontal base. The vertical plate has a width of 3.4 and a height of 3. The horizontal base has a length of 69. A 45-degree angle is indicated at the bottom left corner of the vertical plate.

skæres for svejsning. →  
2 stk. som vist 2 stk. mods.

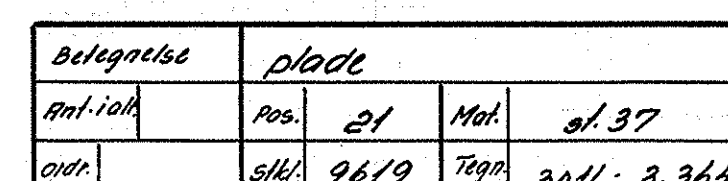
[illegible]

3 mm plote.

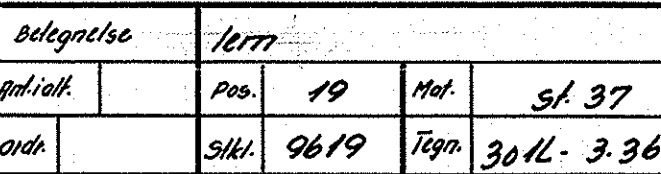
514

[illegible]

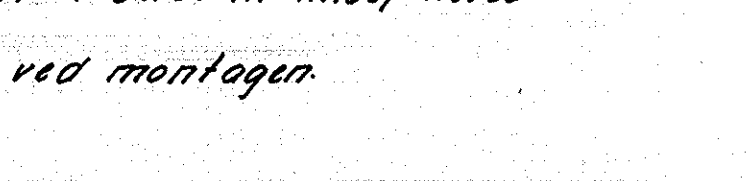
Hullerne opføres  
ved montage.



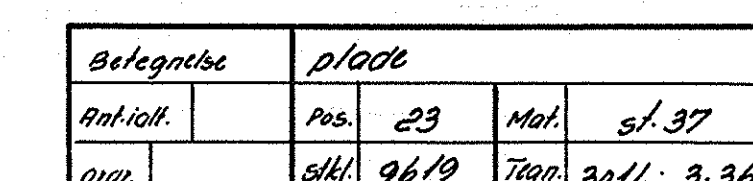
1997	1	5012	5.55
------	---	------	------



Betegnelse		lern			
Ant.volt.		Pos.	19	Met.	st. 37
Ord.		Stkt.	9619	Tegn.	301L - 3.36



Technical drawing of a mechanical part showing dimensions: 13.5, 76, 46, and 13.5.



	0767		70	9	3072	3-58
--	------	--	----	---	------	------

# FRICHS

9619

301L - 3.364