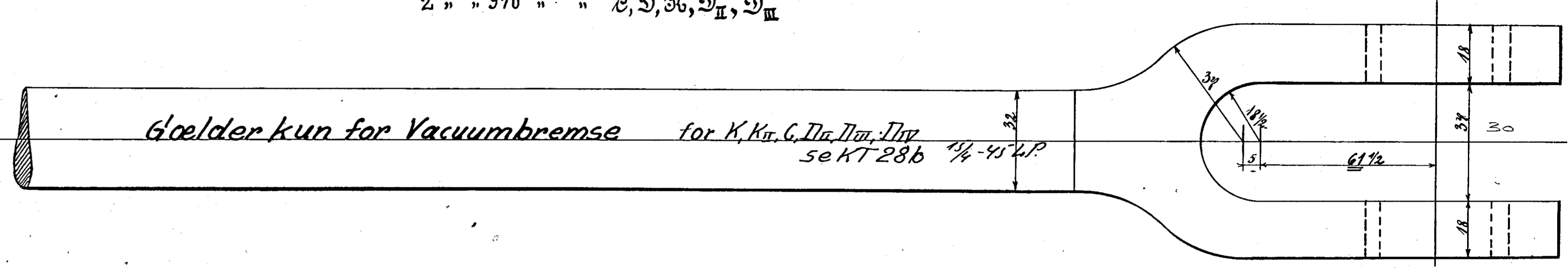
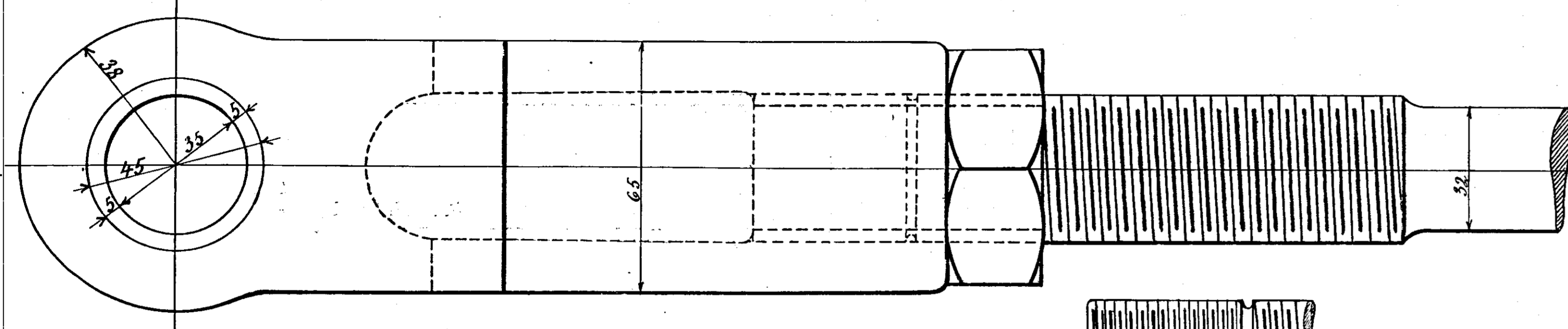


Gælder kun for Vacuumbremse

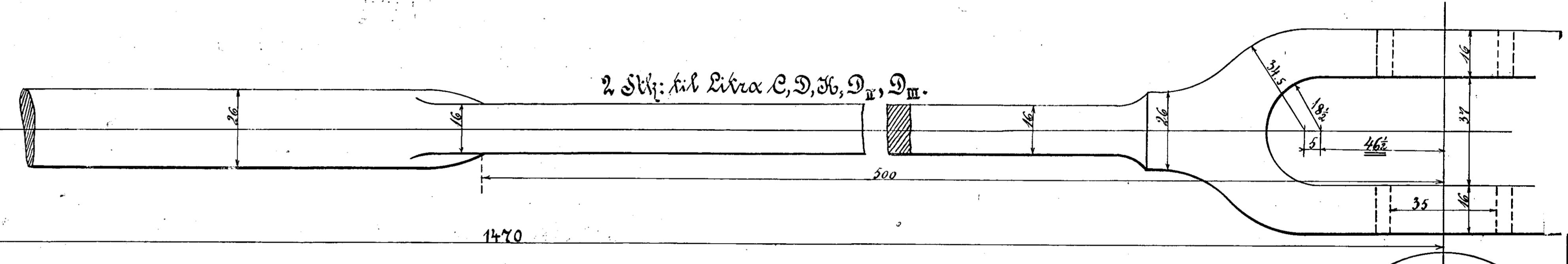
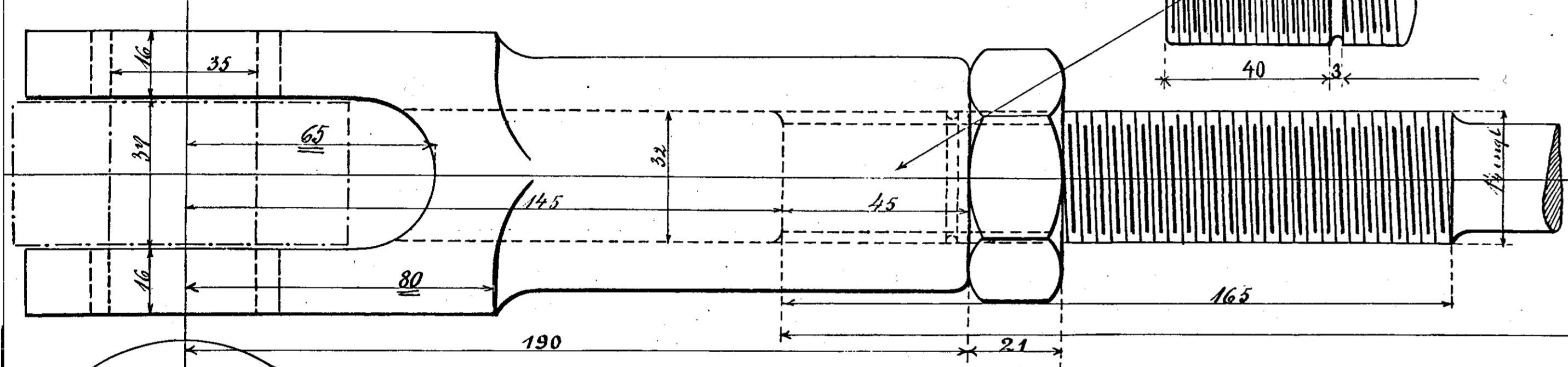
2 Stk. til 880 til Litra P, R, R_{II}.

2 " " 970 " " C, D, H, D_{II}, D_{III}



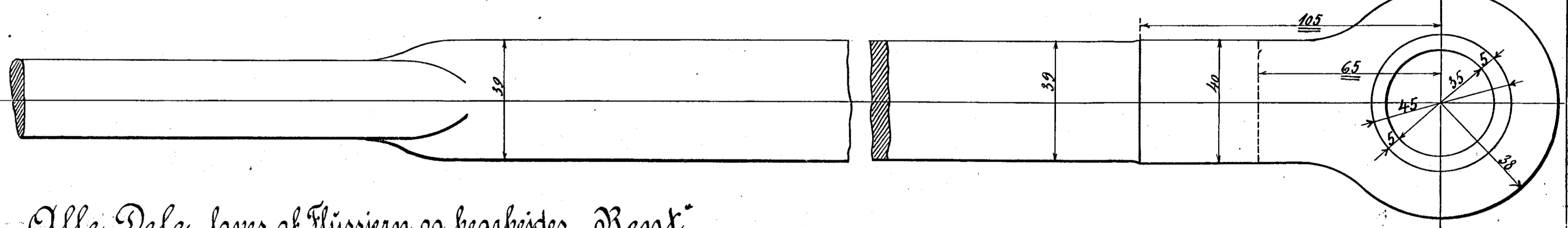
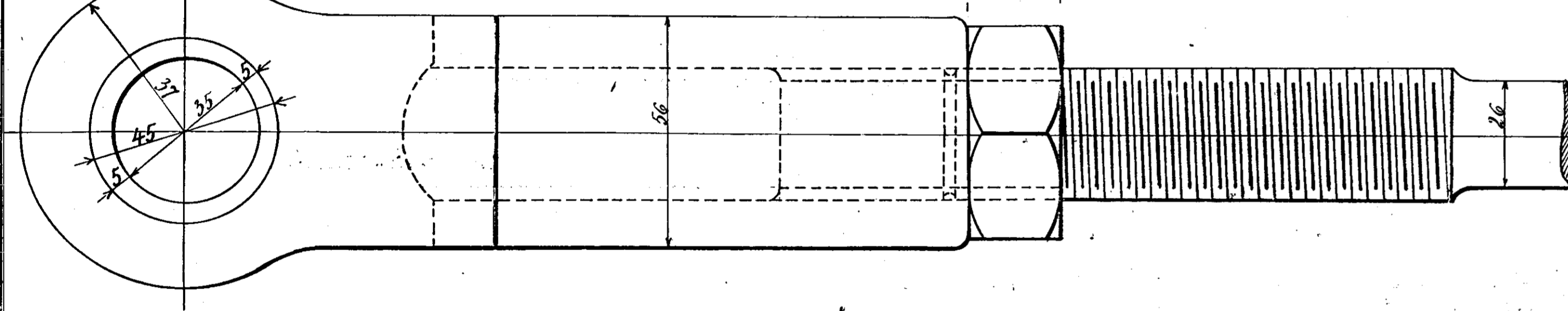
Gælder kun for Vacuumbremse for K, K_{II}, C, D_{II}, D_{III}, D_{IV}

se KT 28b 1/4-45 2P

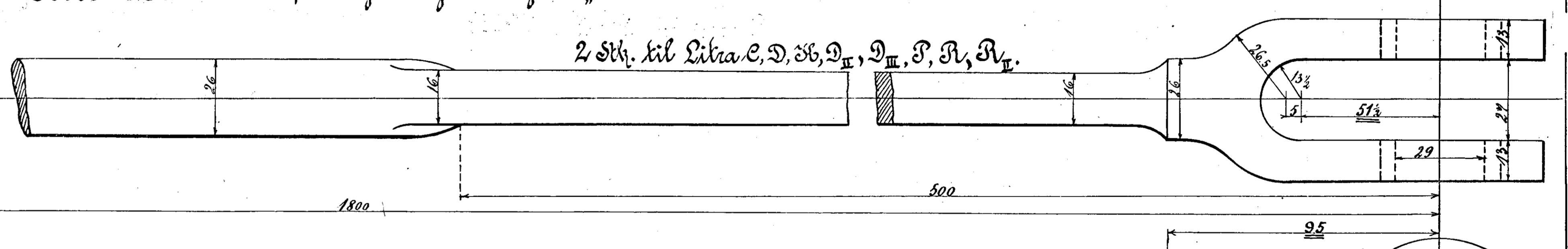
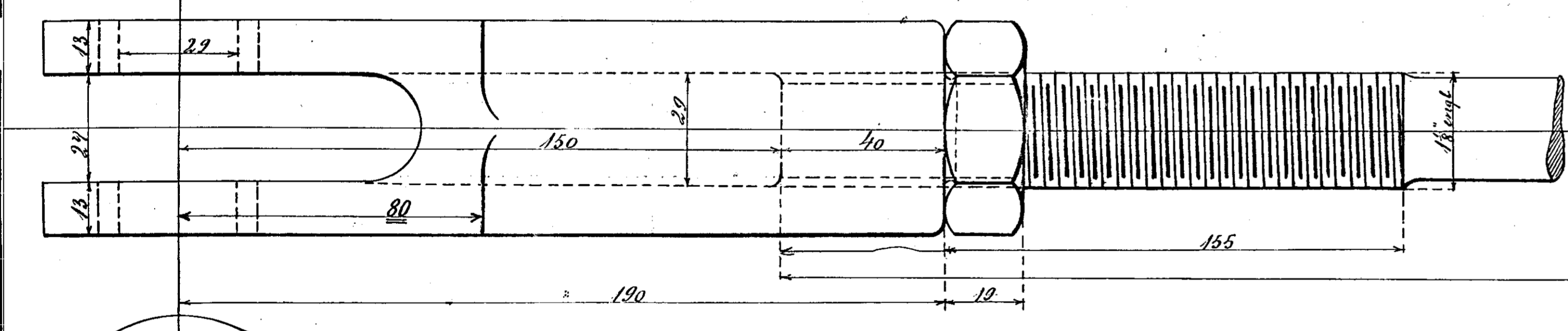


2 Stk. til Litra C, D, H, D_{II}, D_{III}.

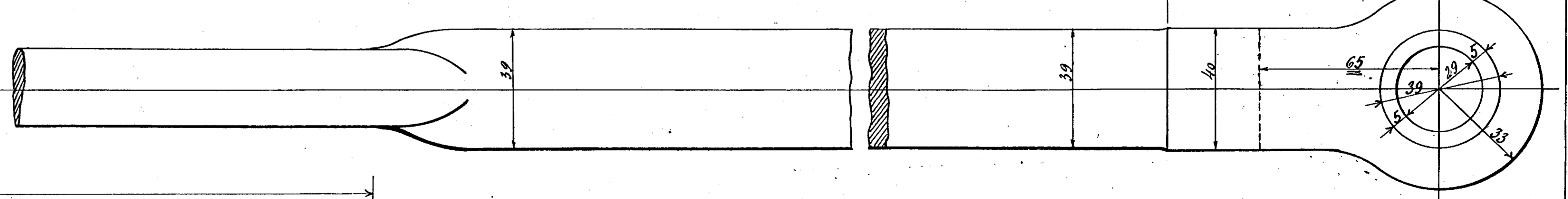
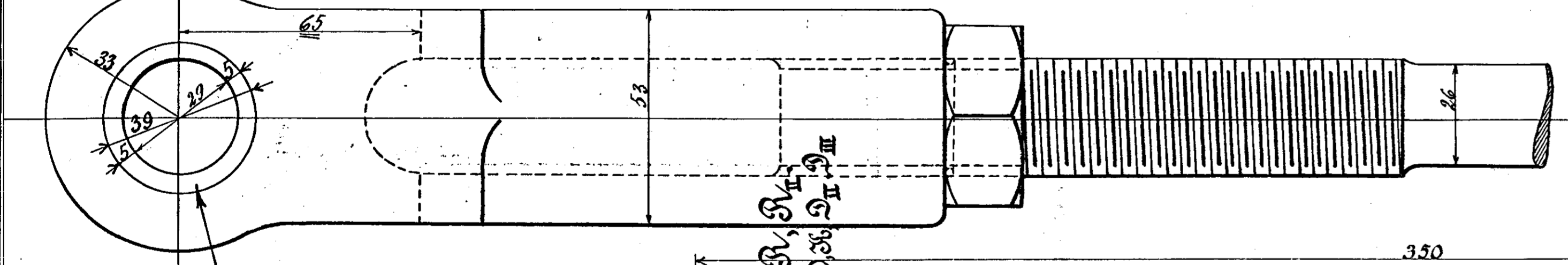
1470



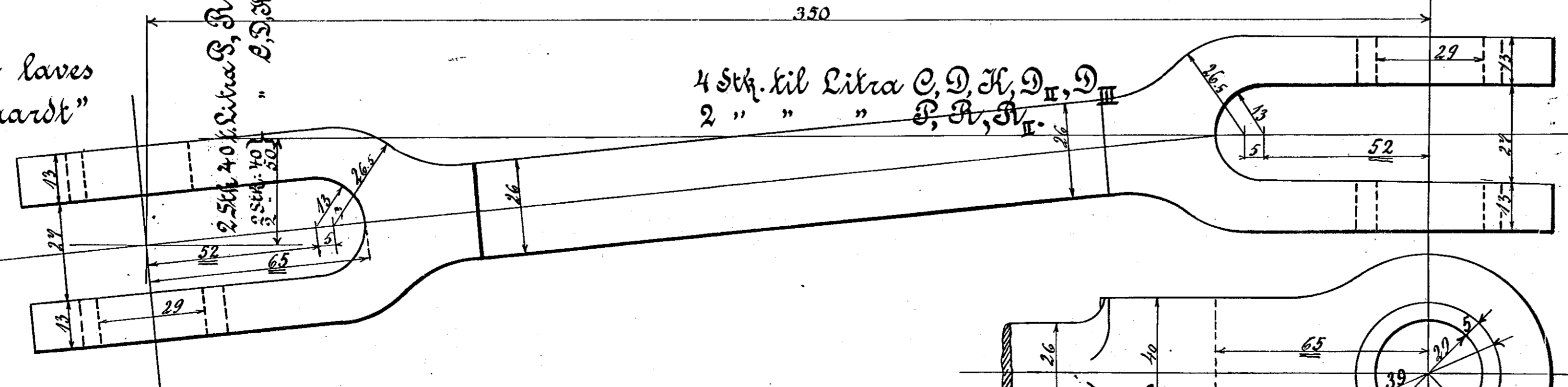
Alle Dele laves af Flussjern og bearbejdes „Rent“.



2 Stk. til Litra C, D, H, D_{II}, D_{III}, P, R, R_{II}.



Alle Bøsninger laves af Flussjern „Saardt“



4 Stk. til Litra C, D, H, D_{II}, D_{III}
2 " " " P, R, R_{II}.

Danske Statsbaner ~ Maskinafdelingen.

Trækstænger til Bremseløjet

Senderi. Litra K, D_{II}, C, S, D_{II}, D_{III}, R, R_{II}, K_{II}

(For Litra P, R, R_{II} m. Trykluffbremse se Tegn. PT. 28)

København, September 1895 ~ Maskinchefen.