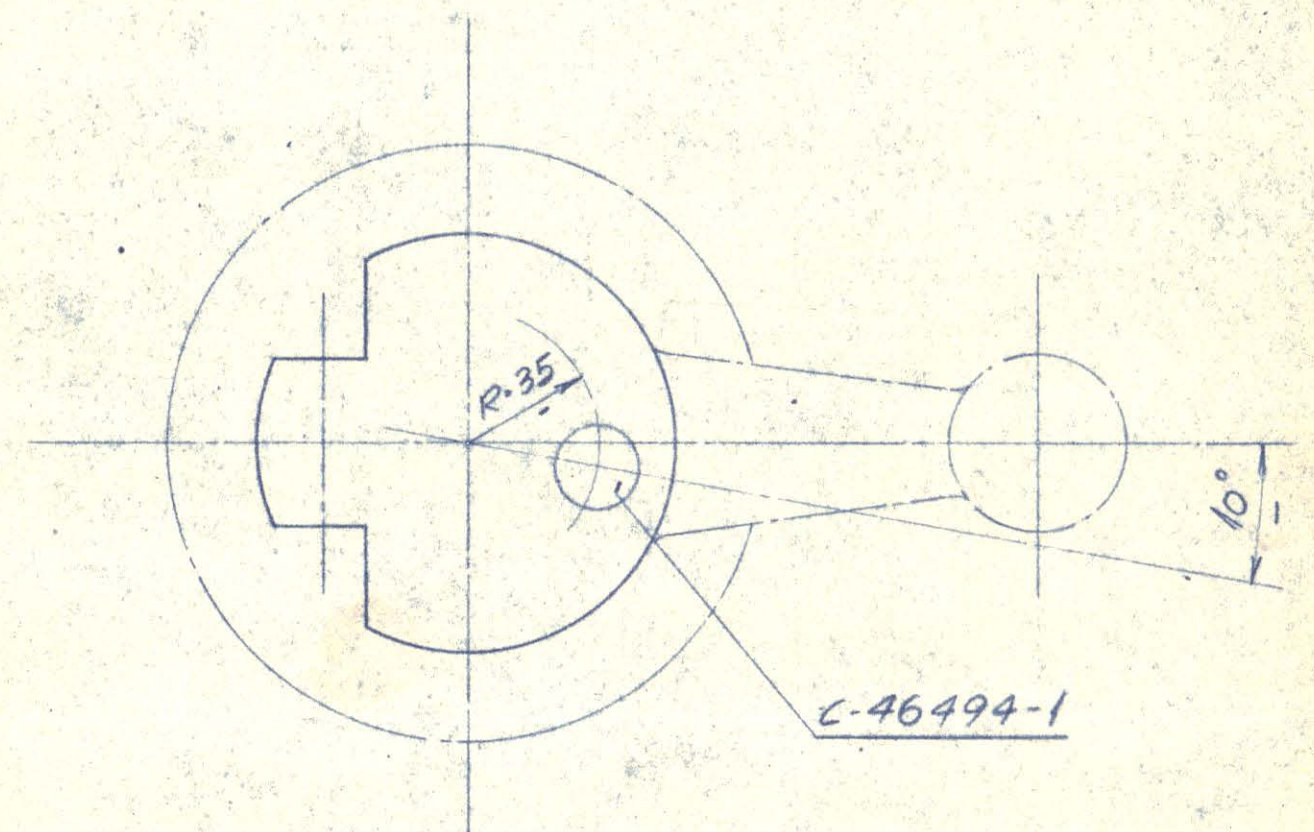
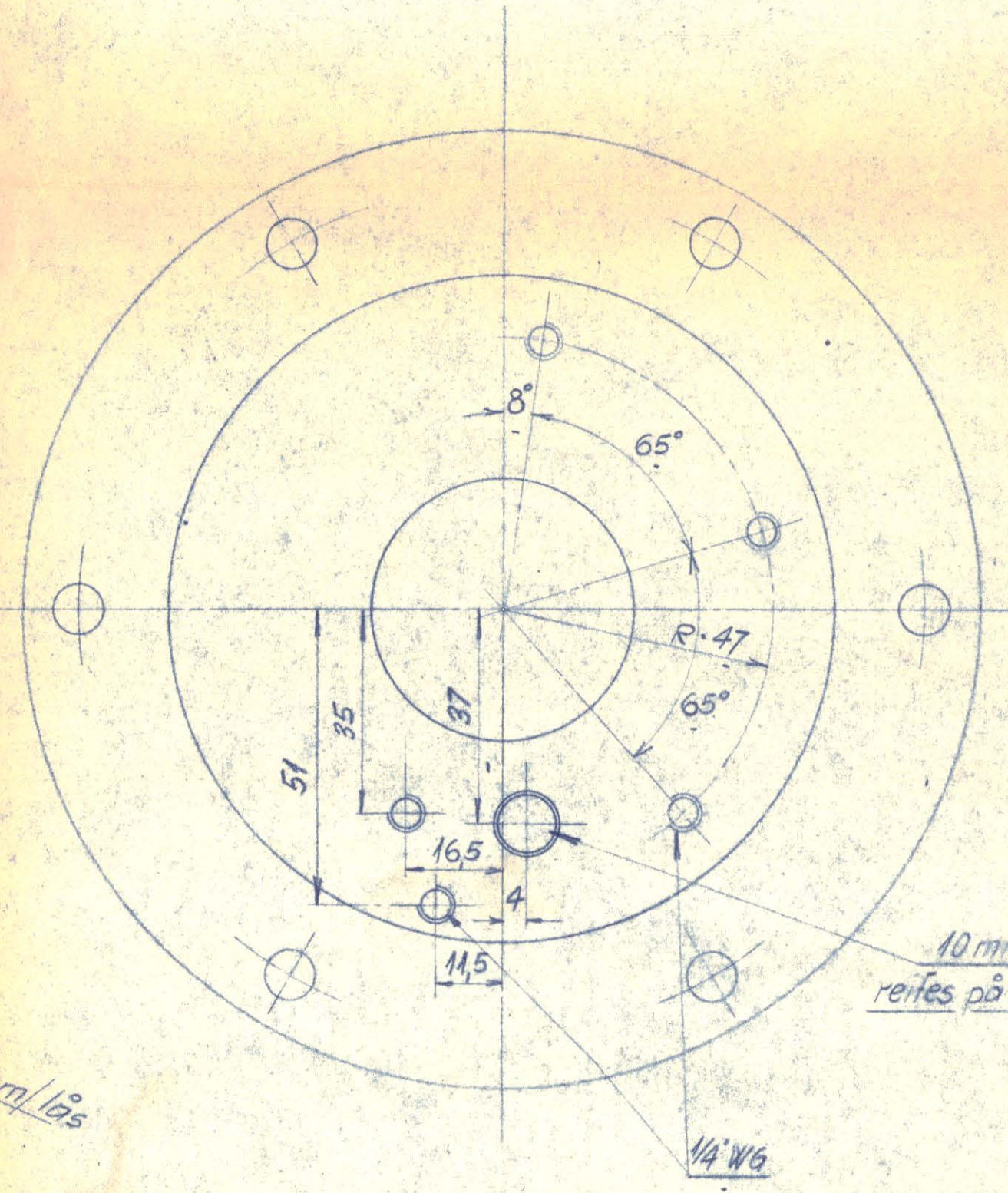


Rdh. skrue $\frac{1}{8}$ " W6 - $\frac{3}{16}$ " m/møtrik & fjederstive



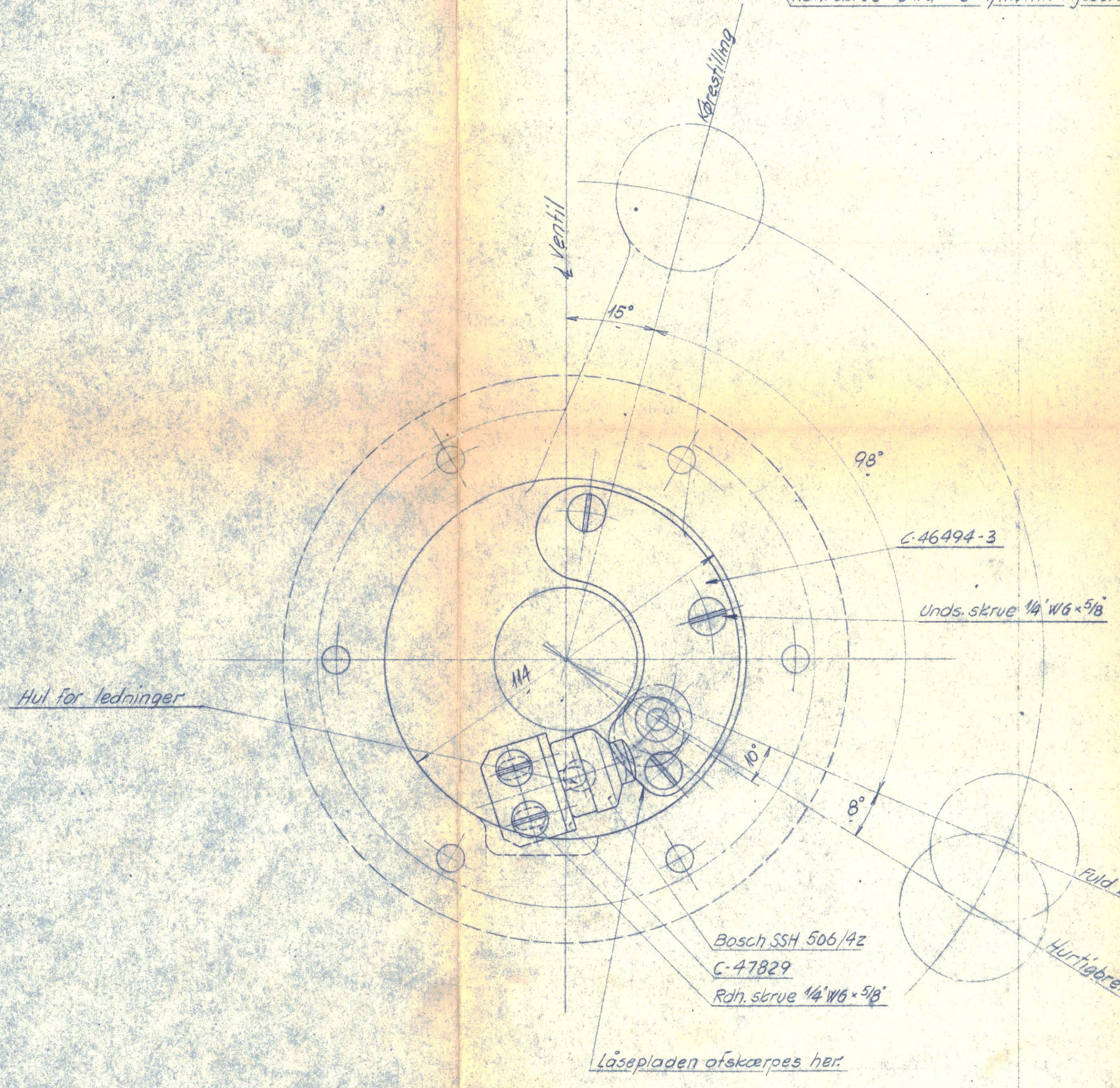
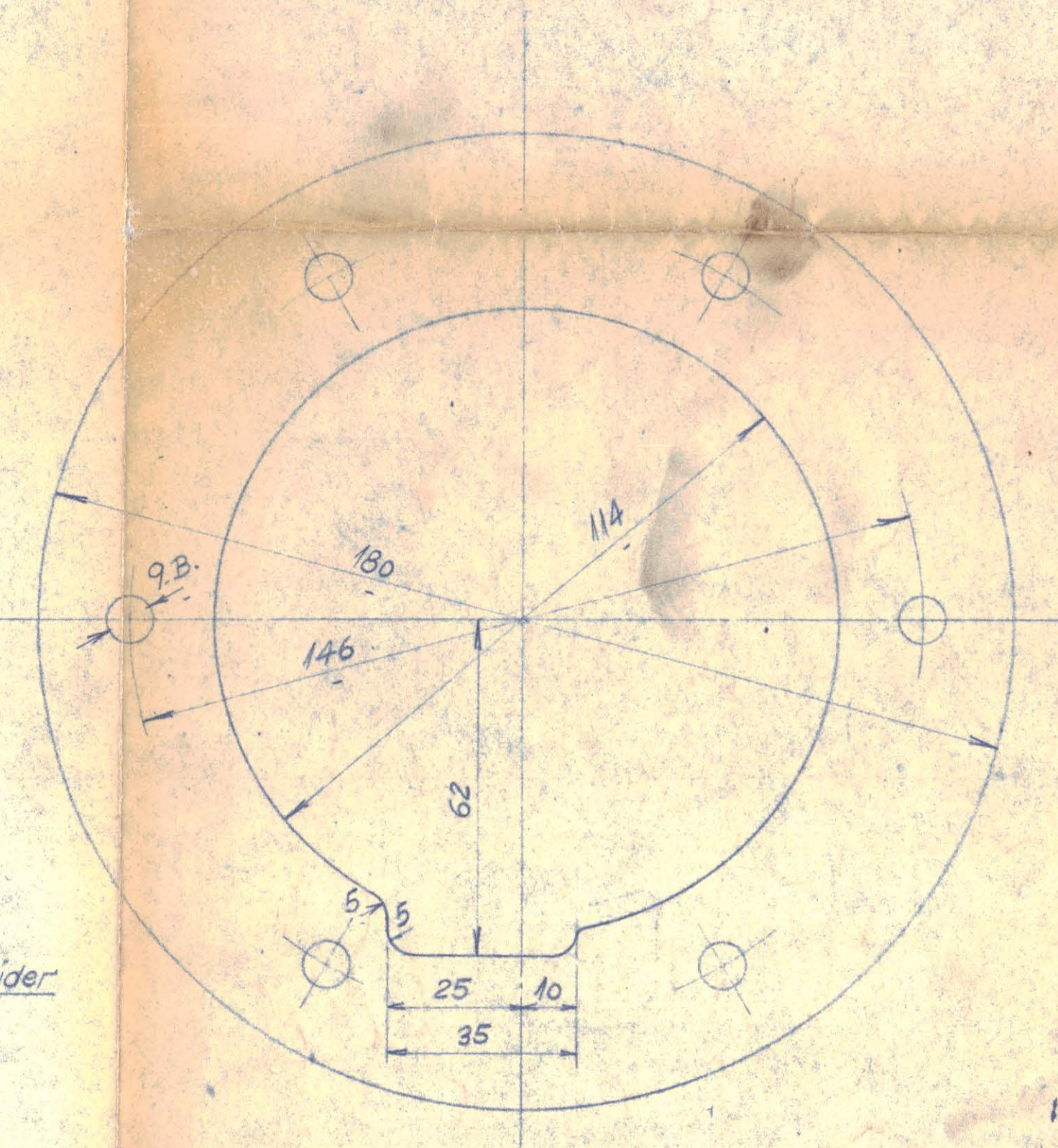
Anbringelse af rør for stop.

Boring af ventilplade



10 mm hul rejes på begge sider

Udstækning i træklods.



C-46494-3

Unds. skrue $\frac{1}{4}$ " W6 x 5/8

Bosch SSH 506/4z
C-47829
Rdh. skrue $\frac{1}{4}$ " W6 x 5/8

fuld bremse m/lås
Hurtigbremse

Låsepladen afskæres her.

Details for aflæsning t.g. C-46494

Stk.	Genstand	Nr.	Mål	Materiale	Model	kg/stk.
	Ny tegning	14-1-54	A			
12 FEB 1954						
VOGNFABRIKKEN SCANDIA RANDERS				Målestok	Tegn.	14-1-54
				1:1	Kalk.	
				1:2	Rev.	
Arr. af kontakt for hurtigbremse. Skeinebus 2. serie.						A1
						C-46530
						Gruppe nr.