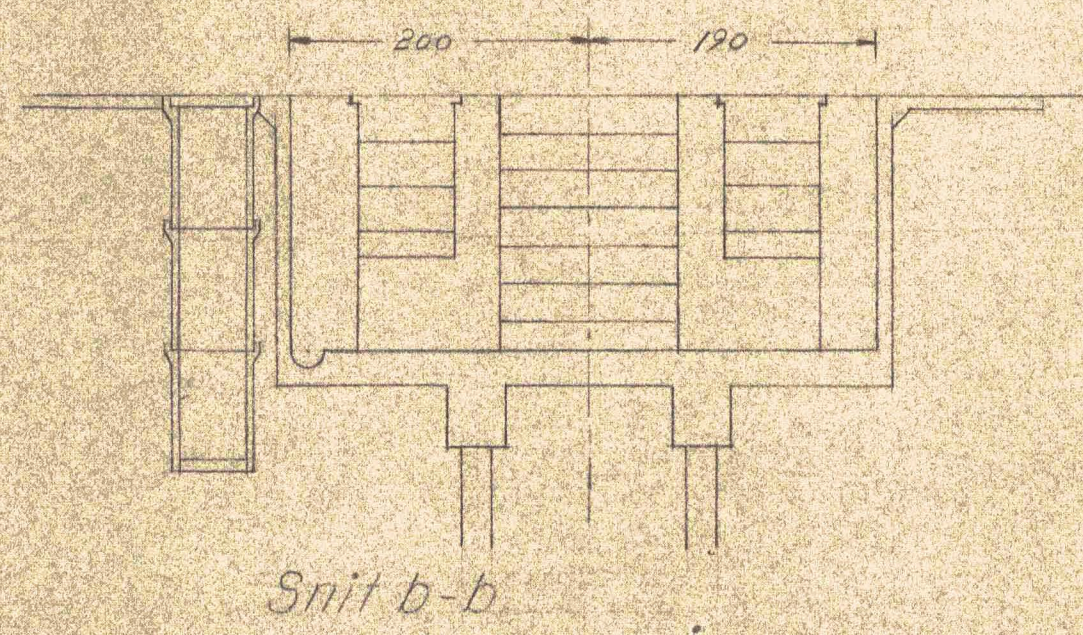
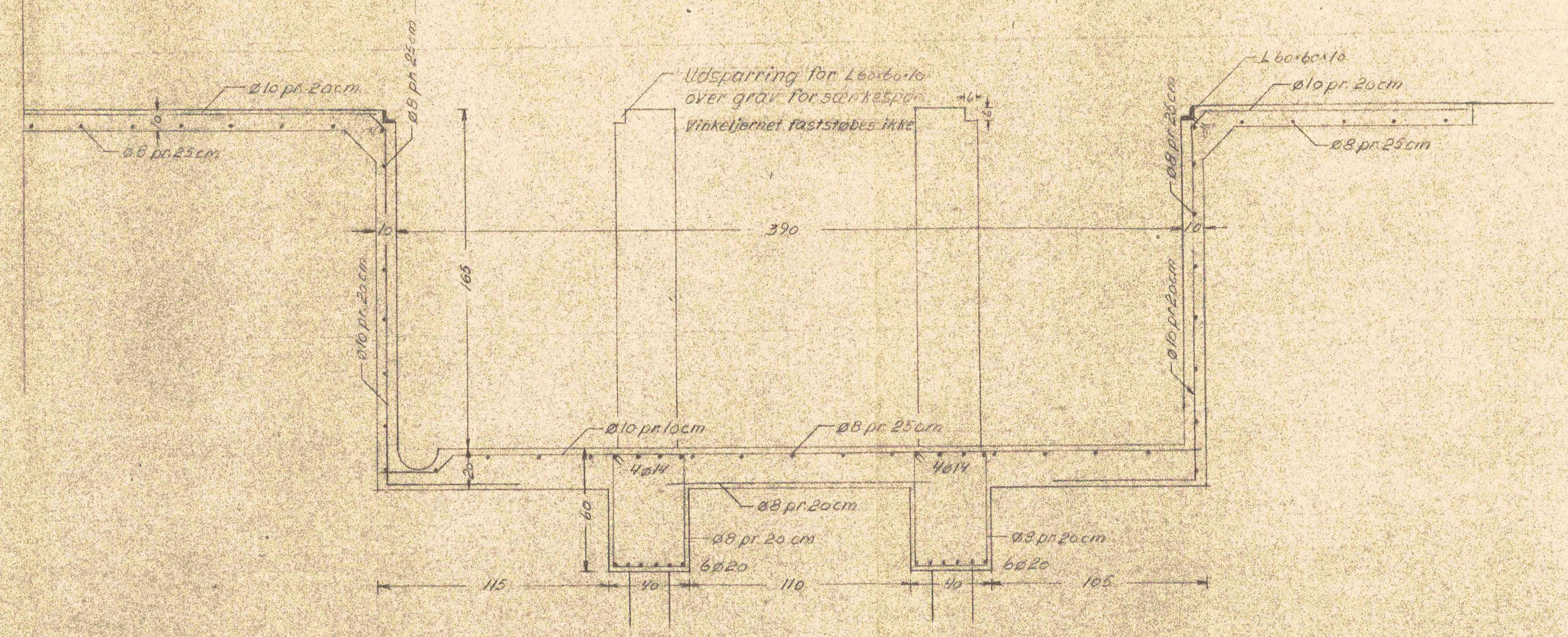


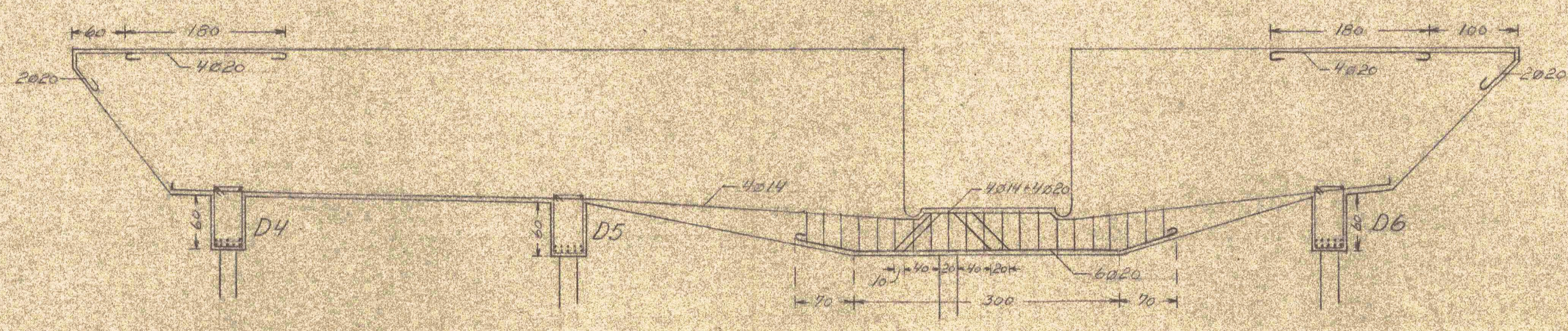
Snit a-a



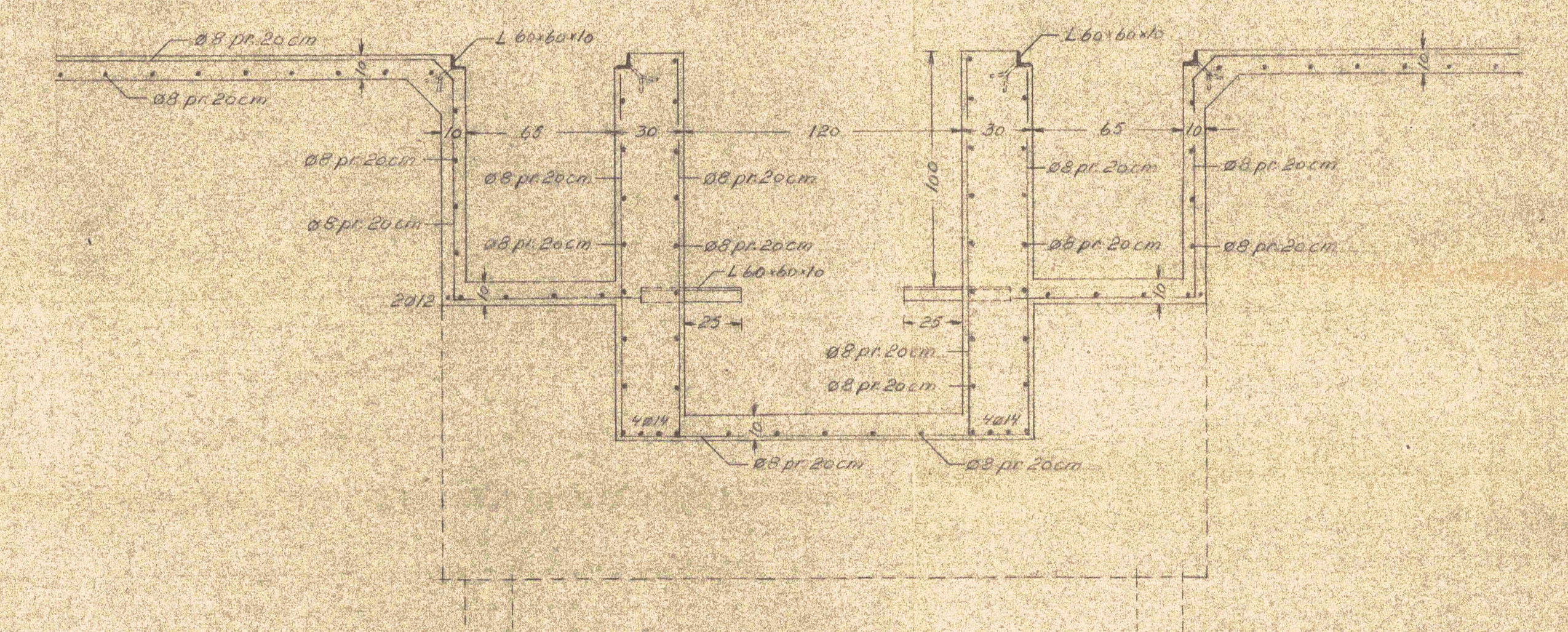
Snit b-b



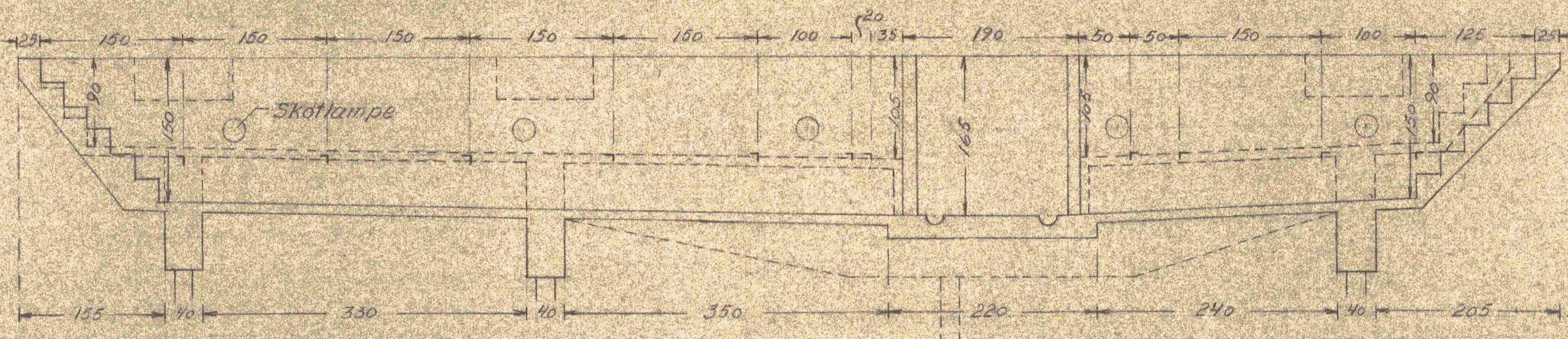
Snit b-b



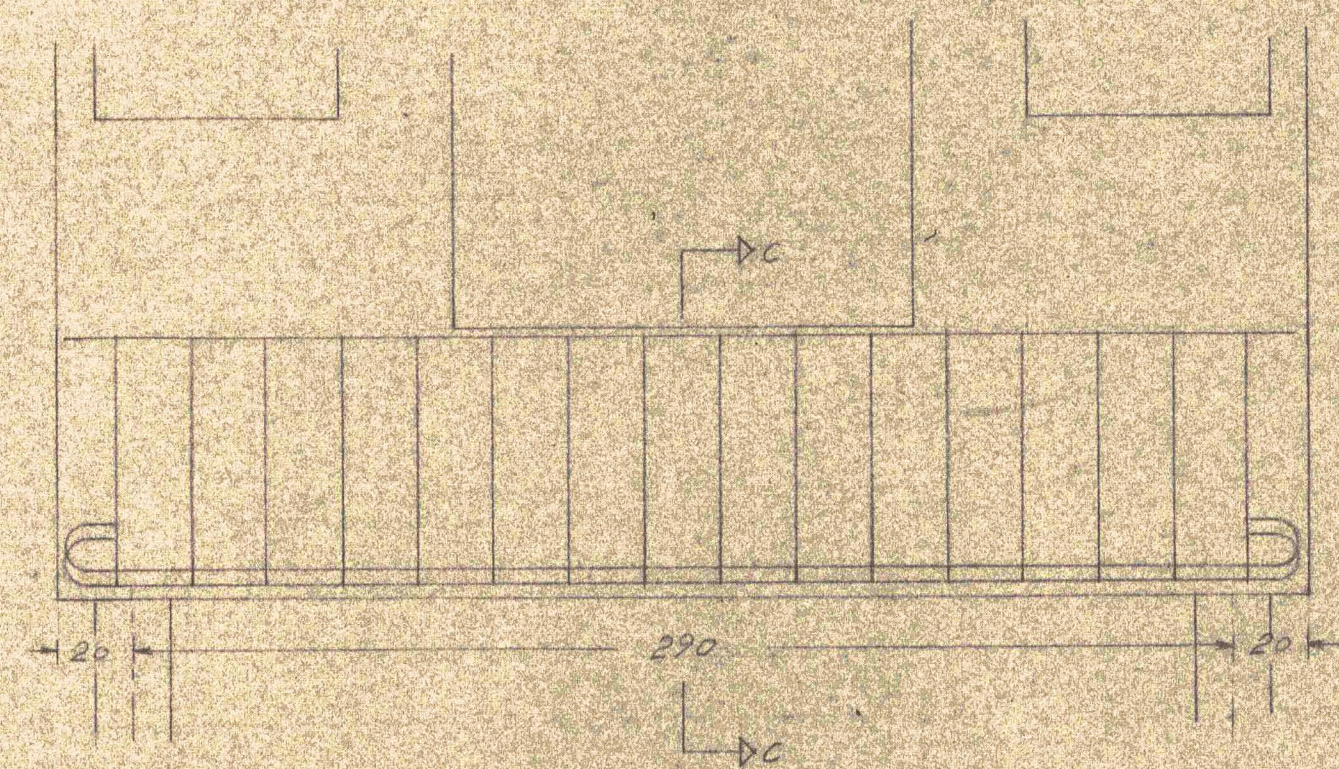
D1, D2, D3



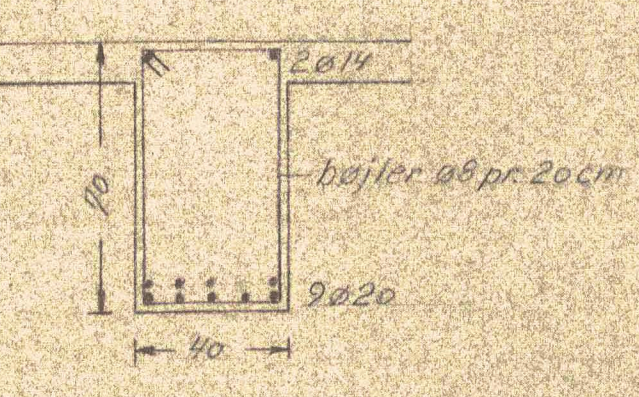
Snit a-a



Længdesnit

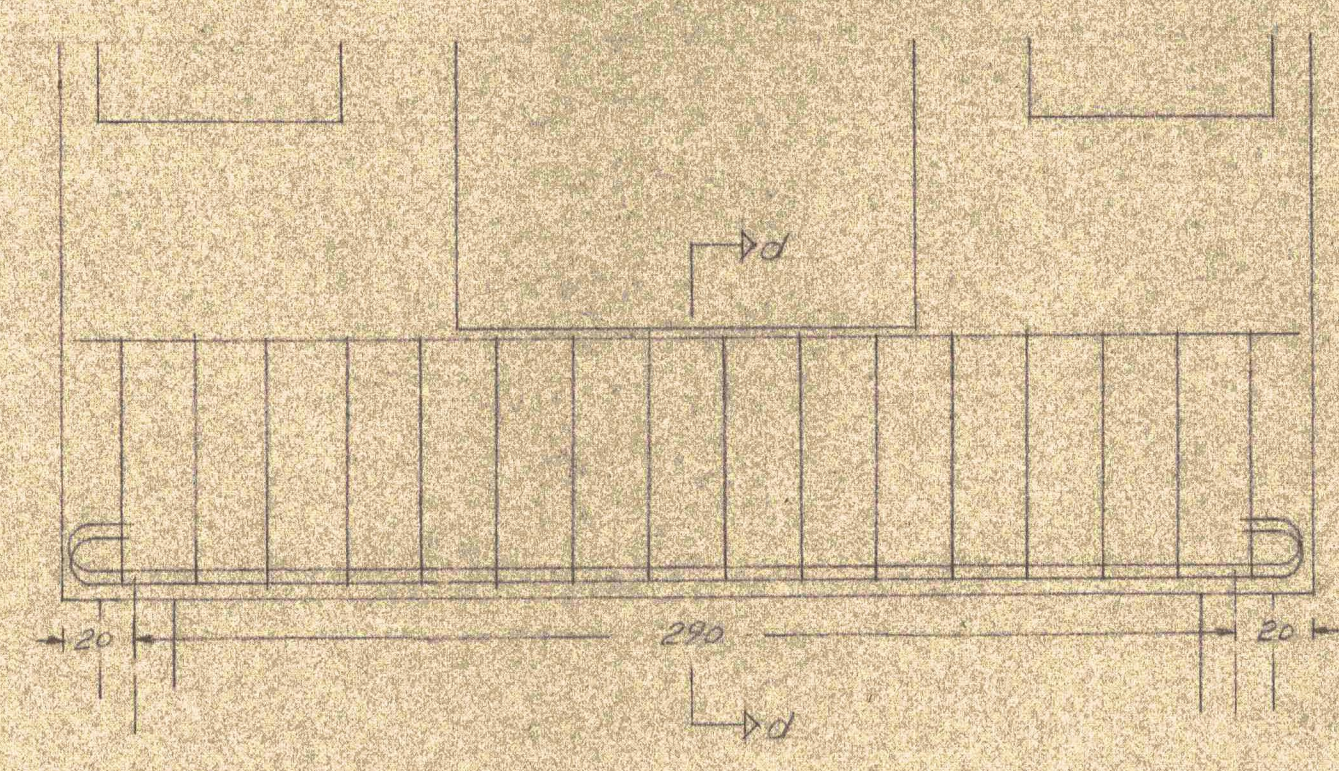


D4

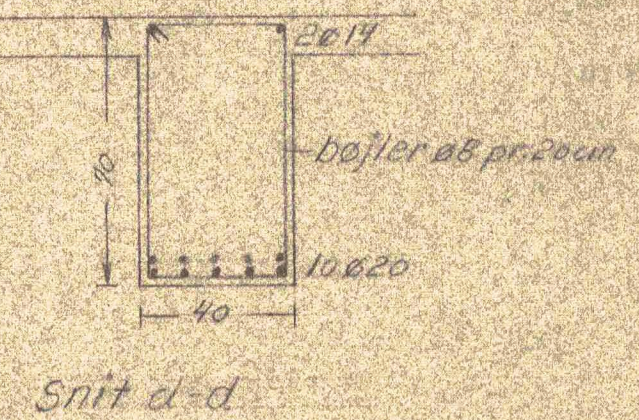


Snit c-c

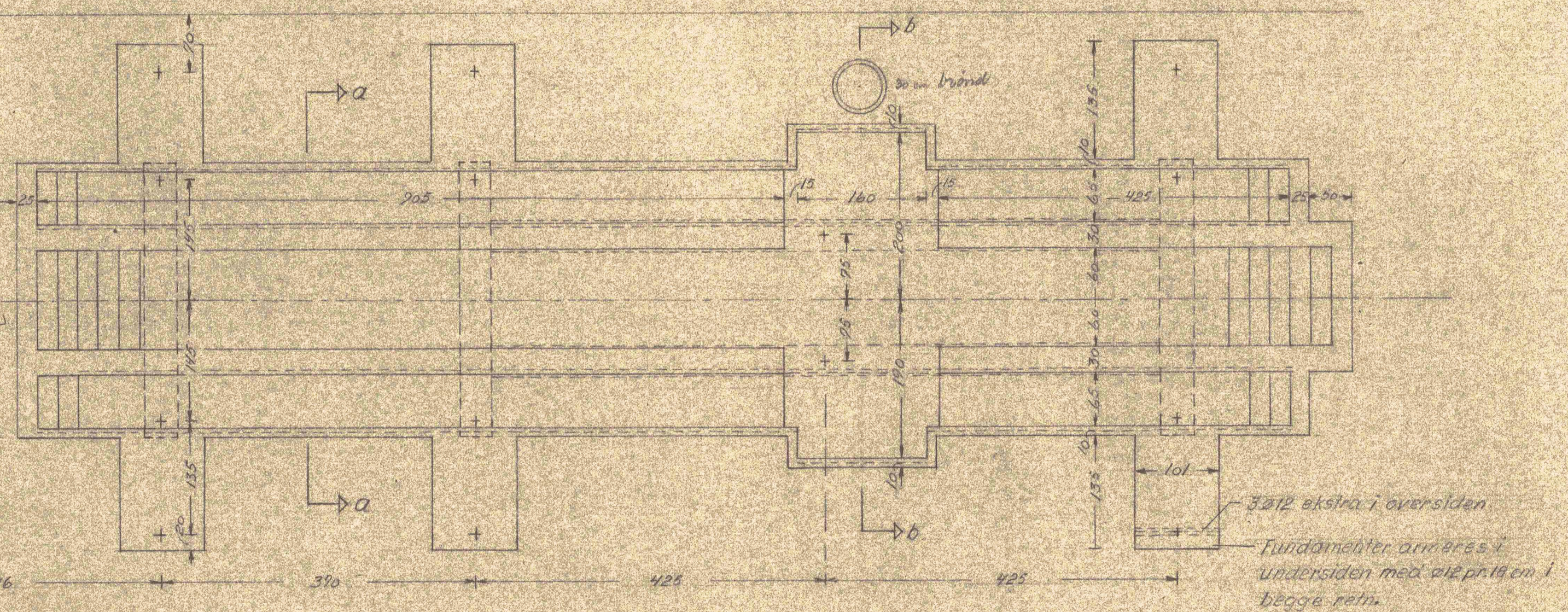
Al jernbeton støbes paa rørelag eller med forskalling
 Betonstærkning = 2 cm
 G₂ = 300 Kg/cm², stædt 37



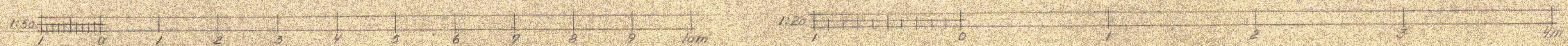
D5, D6



Snit d-d



Vandret snit



ØRUM & NIELSEN CIVILINGENIØRER
 RAADGIVENDE INGENIØRFIRMA
 ÅLBORG - JERNVEJ 14 - TEL 1271

Aalborg Privatbaner
 Løfteplads for dieselloko
 Details af jernbeton

MÅL 1:50, 1:20
 TITEL R.Y.P.
 UDG. R.Y.P.
 Dato 3.12.1952
 12433
 2/3.1953
 B.K.

Blad	165
Ark	24