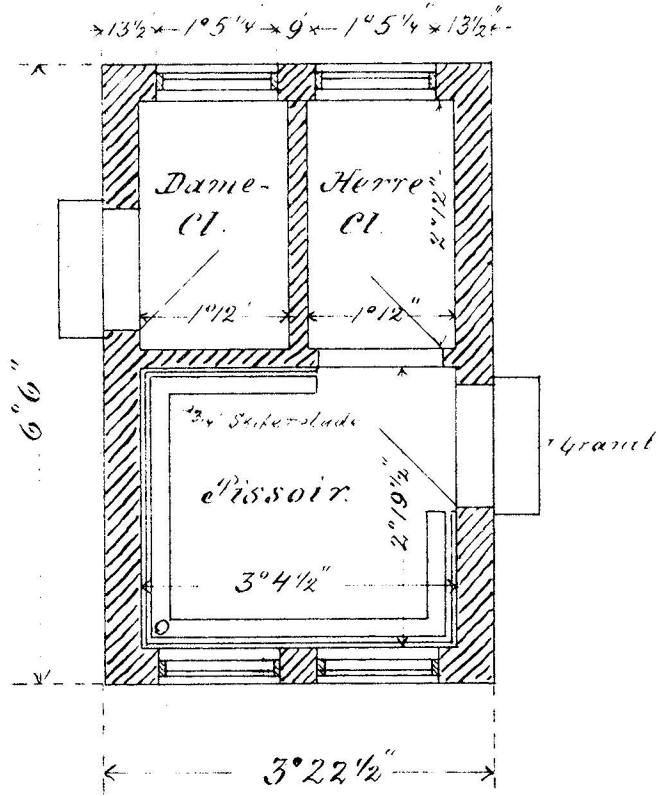
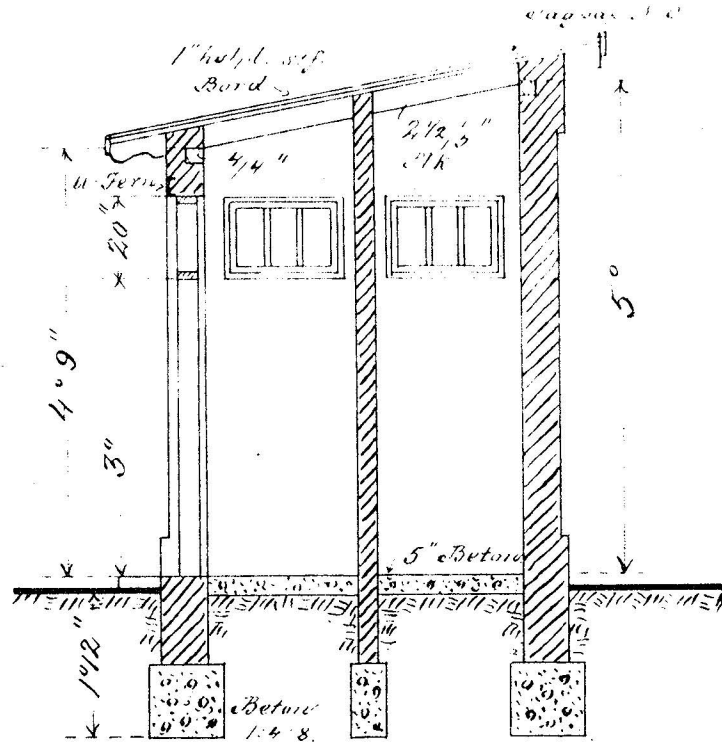


Braaskov Station.

Plan



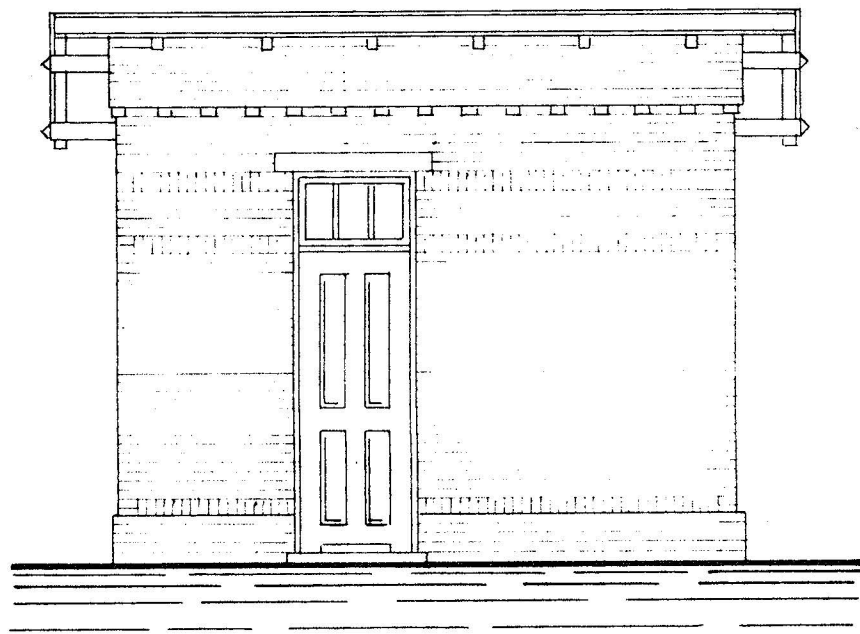
Snit.



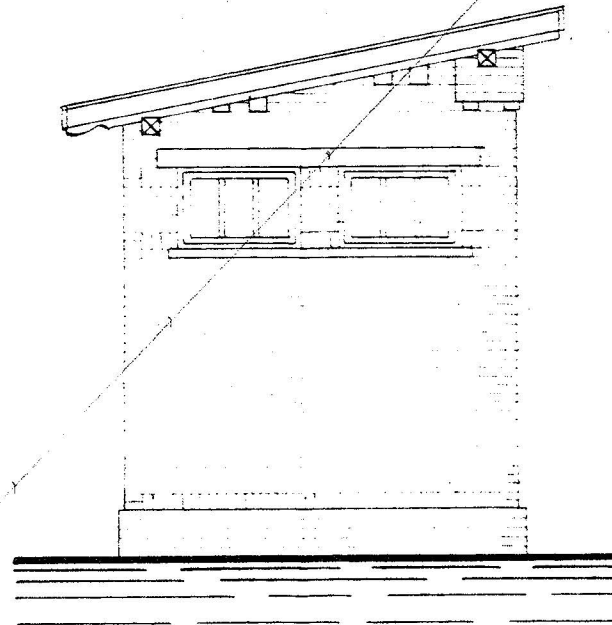
8,89  
 400,0 : 45  
 360  
 400

5,73  
 258,0  
 225  
 330  
 315  
 150  
 135  
 15

Facade.



Gavl.



Grundplan (sokkel)

4,0 x 2,58 m

8,89 x 5,73 cm (skala 0)

1" = 24"

