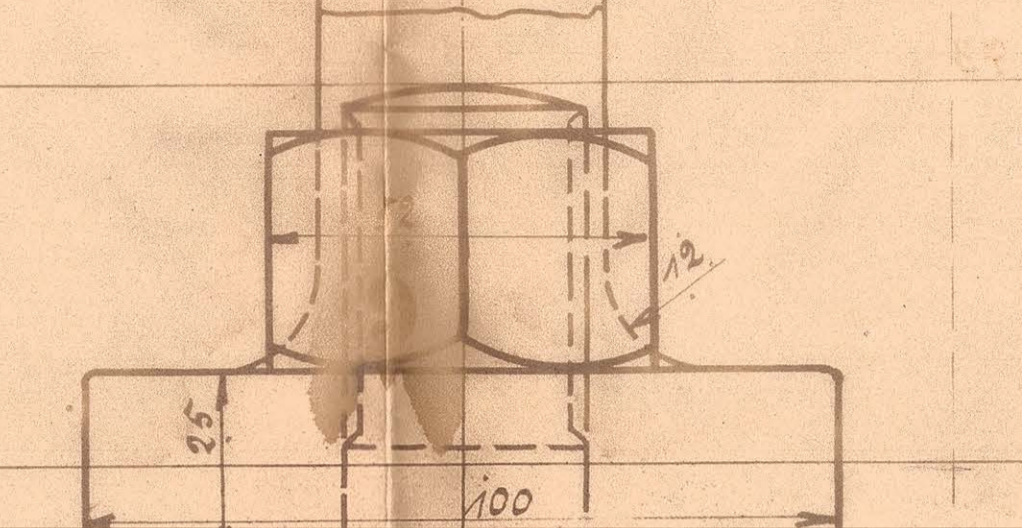
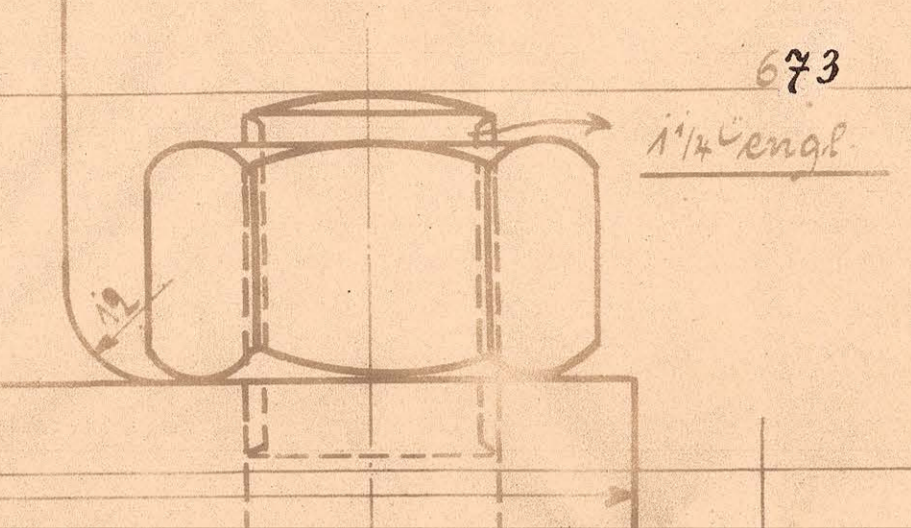
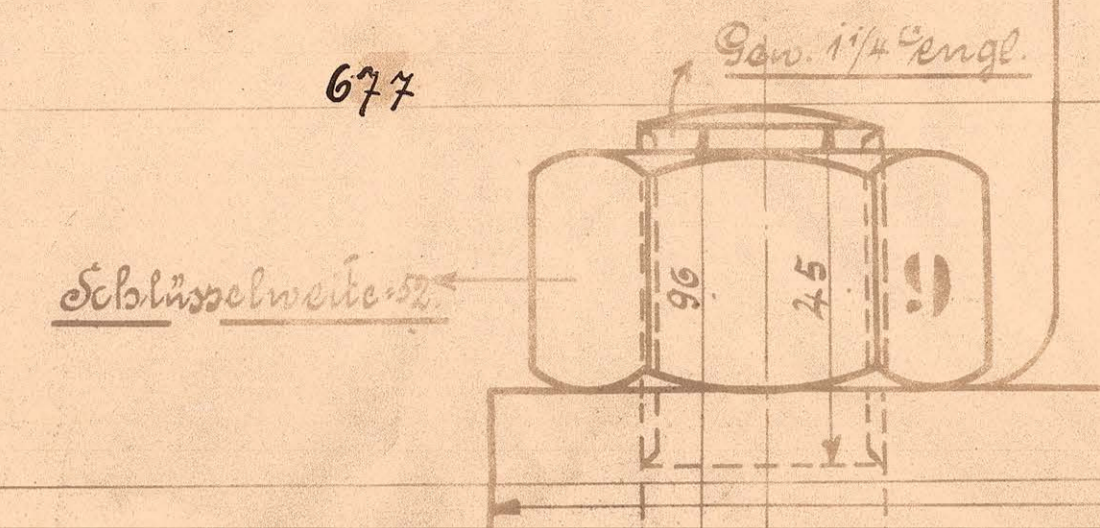
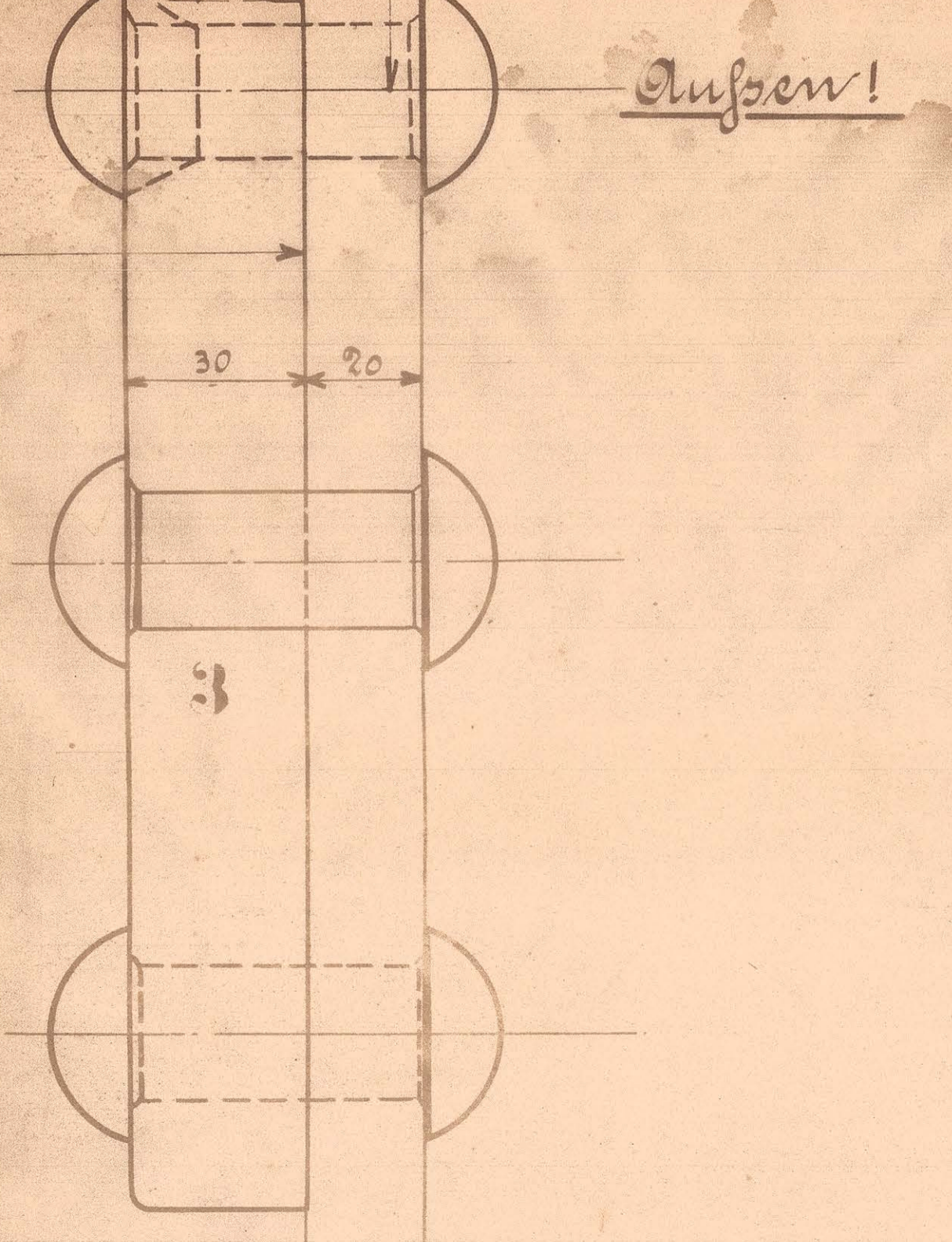
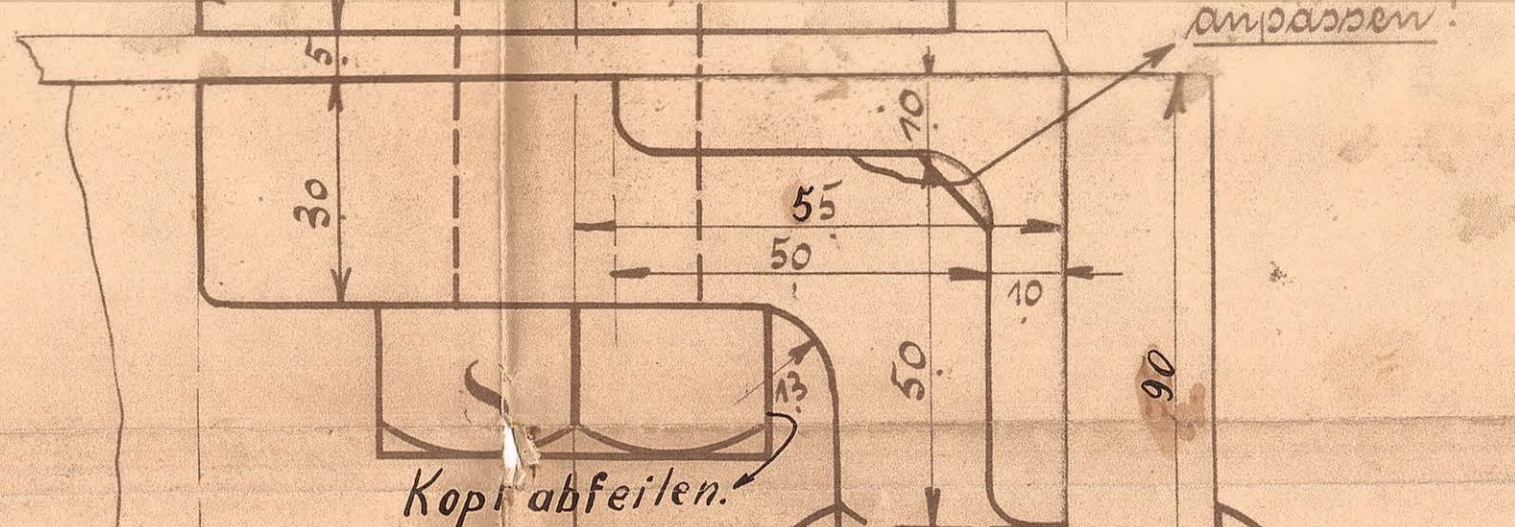
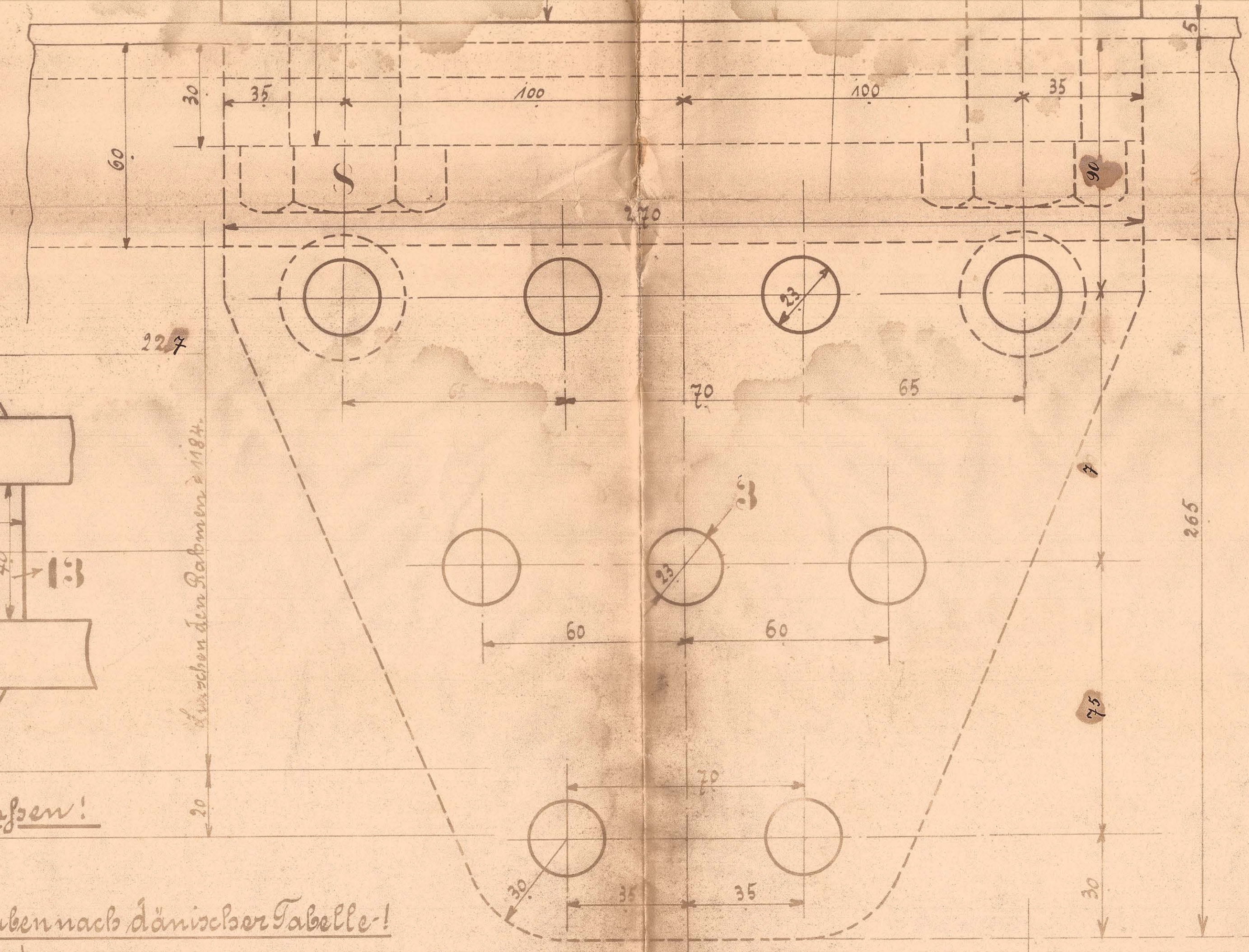
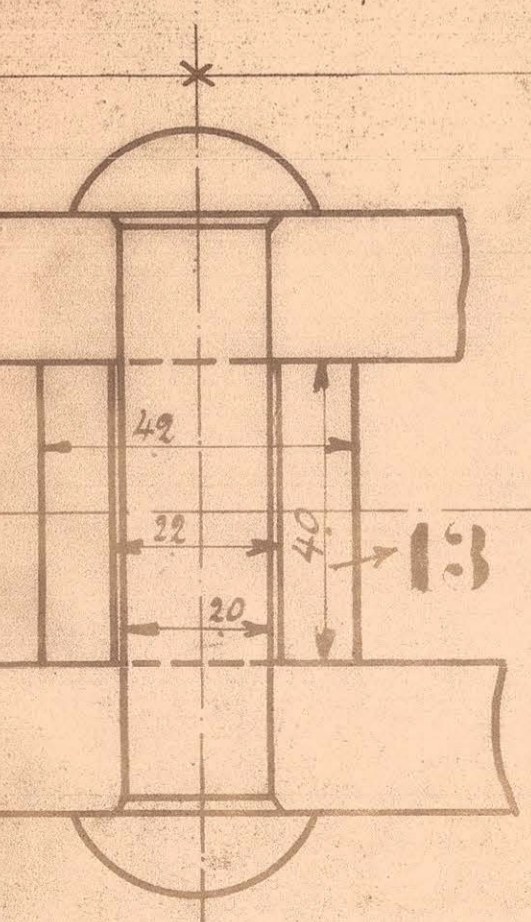
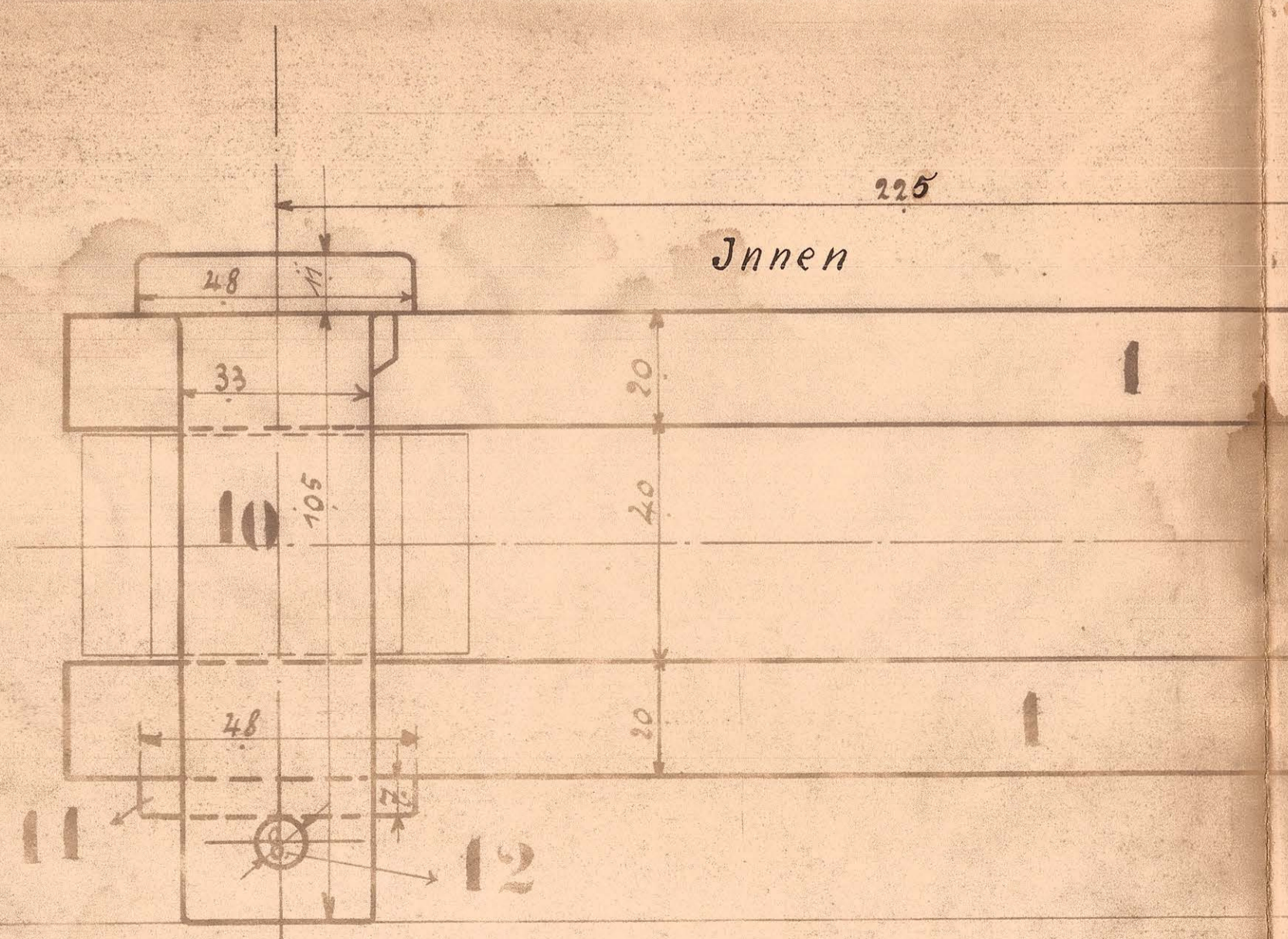


Ganze Länge des Bleches = 1422

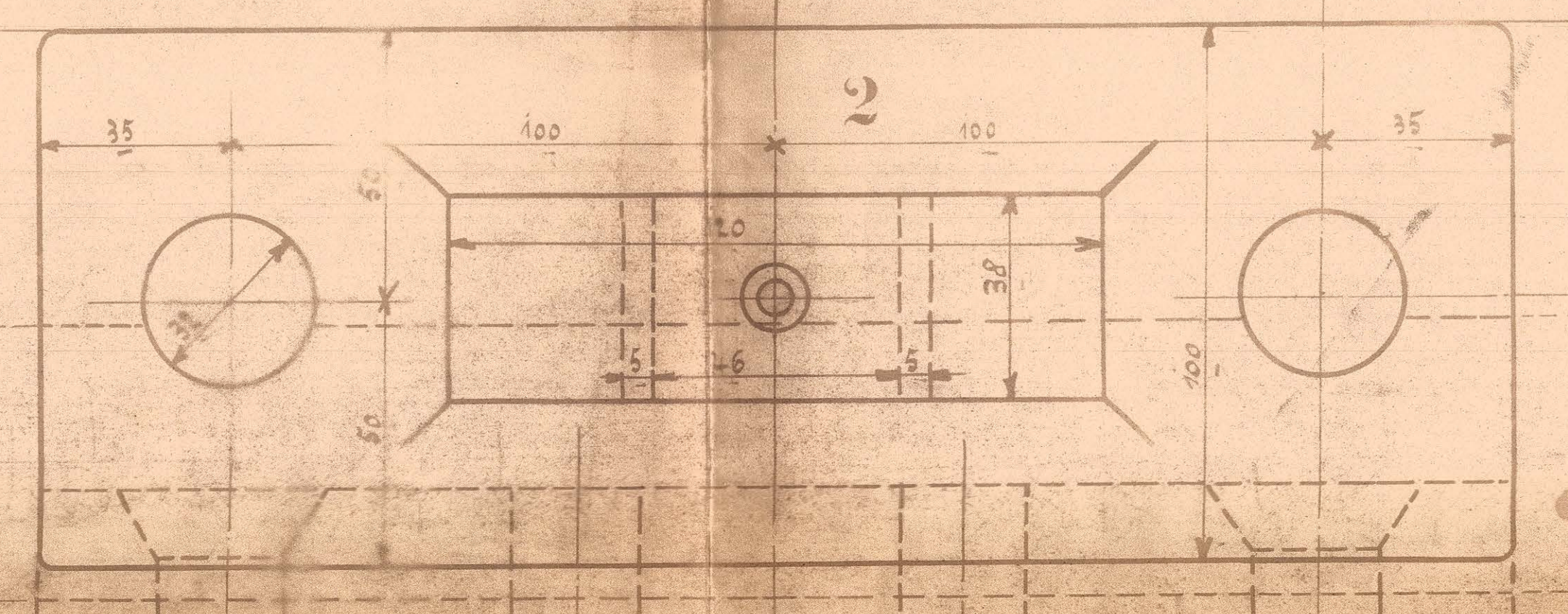


Augen und Bolzen härten!



Außen!

Schrauben nach dänischer Tabelle!



HENSCHEL & SOHN CASSEL

Vorderer Balancier mit Kletter

zur A.C. 4 gekuppelte Tender-Lokomotive

für die Kolding-Südbahnen

Fabrik Nr. 11363

Zeichng. Nr. 145

Stück- zahl	Benennung	Stück- zahl	Material	Bemerkung	Zeich- Pos.	Dimensionen und Maßstab	Verf.- Gang
1	Balancier	1	St.				
2	Kletter	2					
2	Verstärkungswinkel	2					
2	Bolzen	2					
2	Büchsen	2					
2	Scheiben	2	St.				
2	Spindeln	2					
4	Schrauben	4					
4	Wellen	4					
4	Bolzen	4					
4	Scheiben	4					
4	Spindeln	4					
8	Federstangen	8	St.				