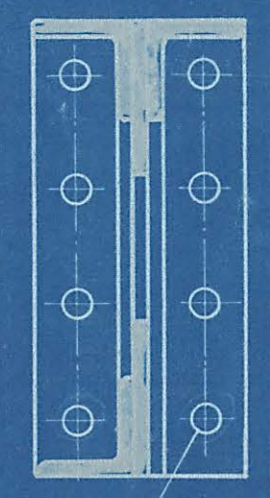
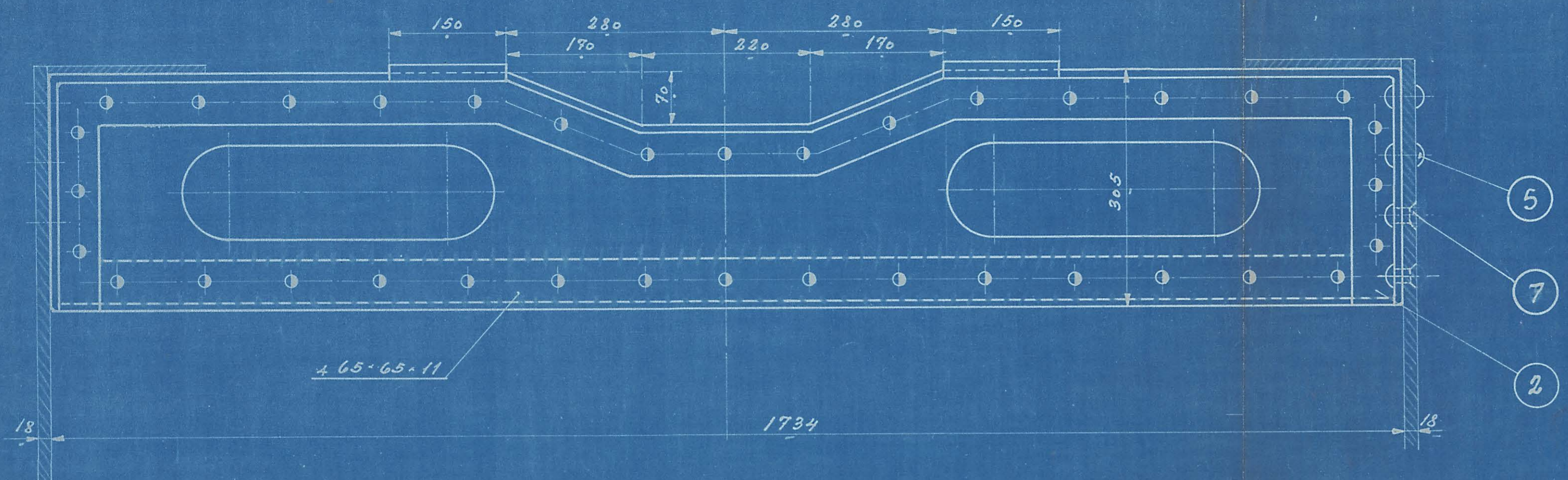


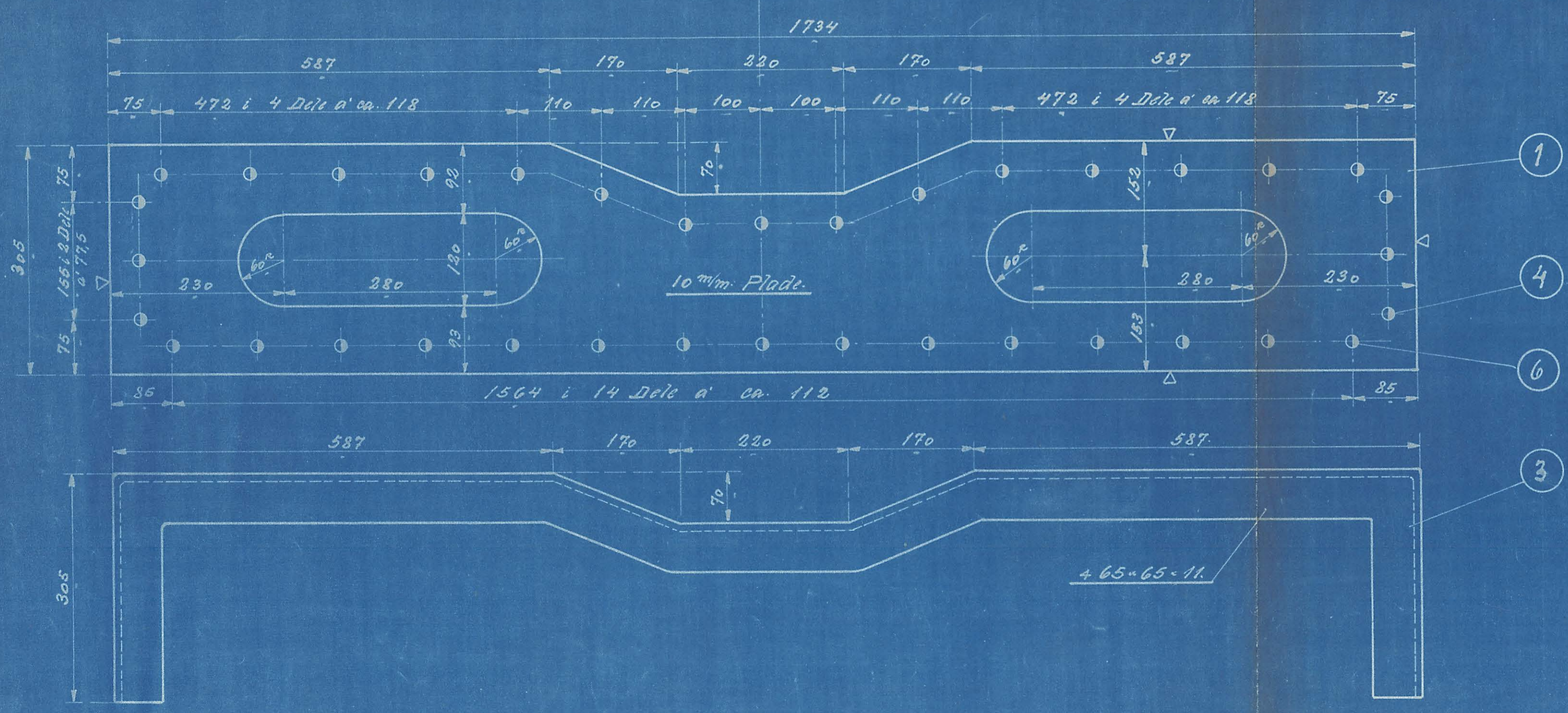
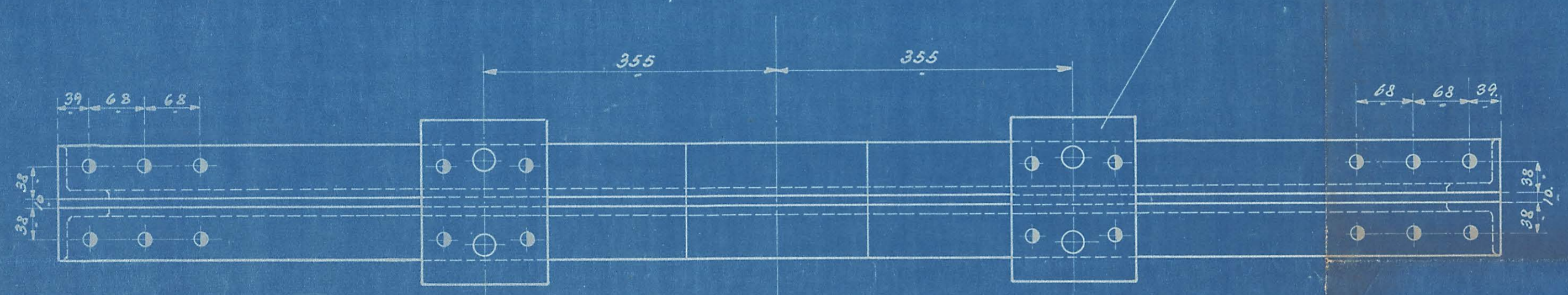
51907.

ST.	BETEGNELSE	Fluss-Jern.	
1	1 Plade.		1750-32016
2	1 Vinkelramme.	"	465-65-11 4335
3	1. do.	"	2500.
4	21. Nagle. 164-56	Niller.	Besl.
5	8 do. 204-60	do.	"
6	15 do. 164-46	do.	"
7	8 do. 204x50	"	"



Bores eller Ramme.

Fundamentplade. Teg. 120 L-8.19.



Ramme for forbindelse VI  
Dissol. nr. 20/275 H. Motorloka.

1:5 120 L-8.15.  
7-5-32