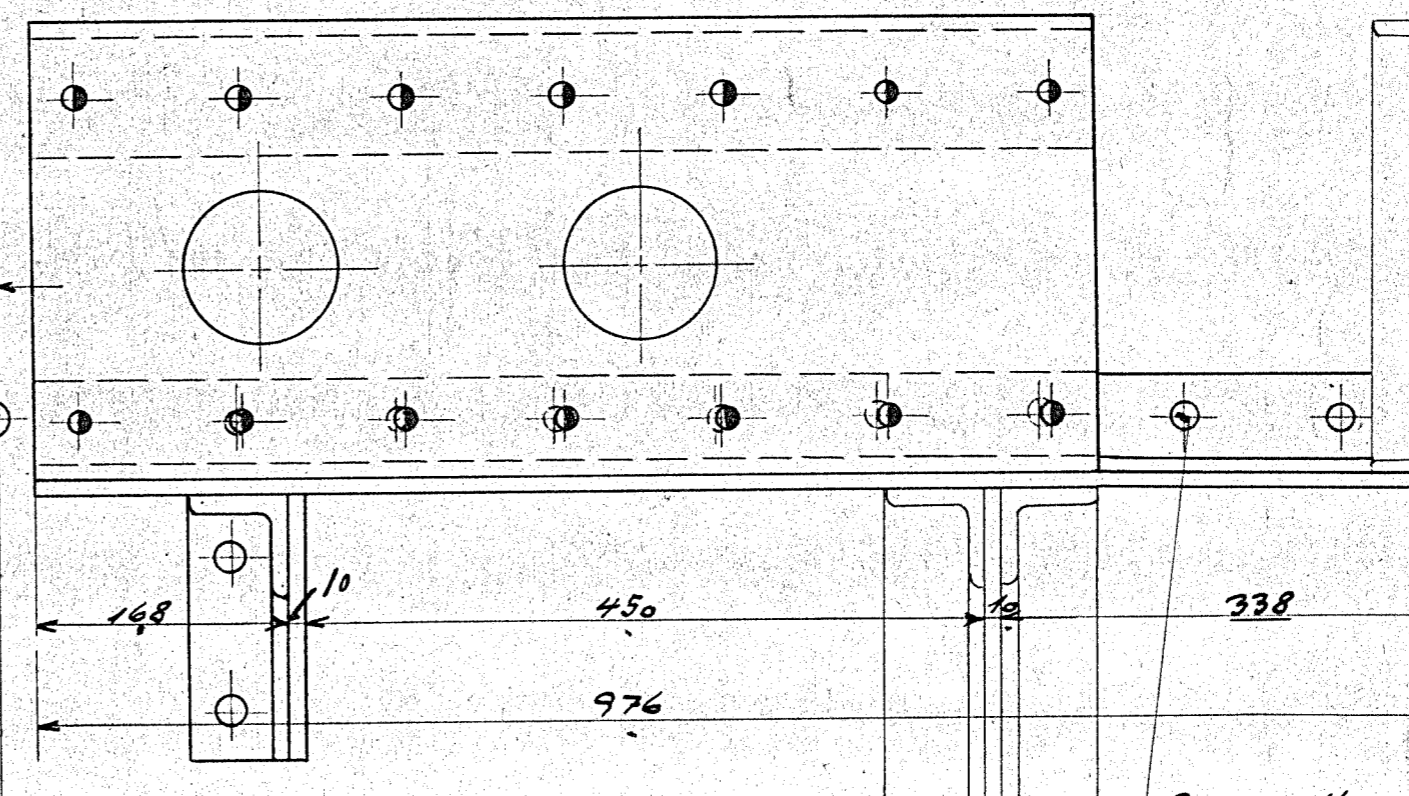
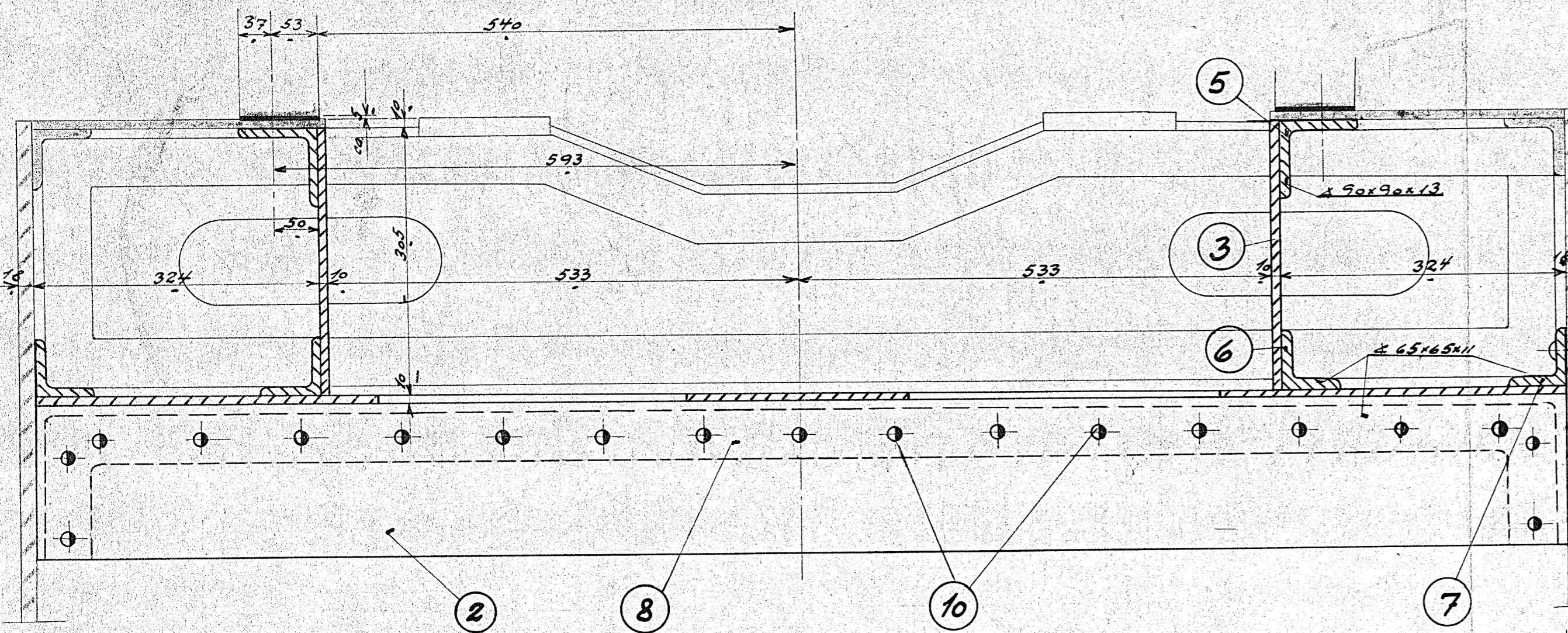
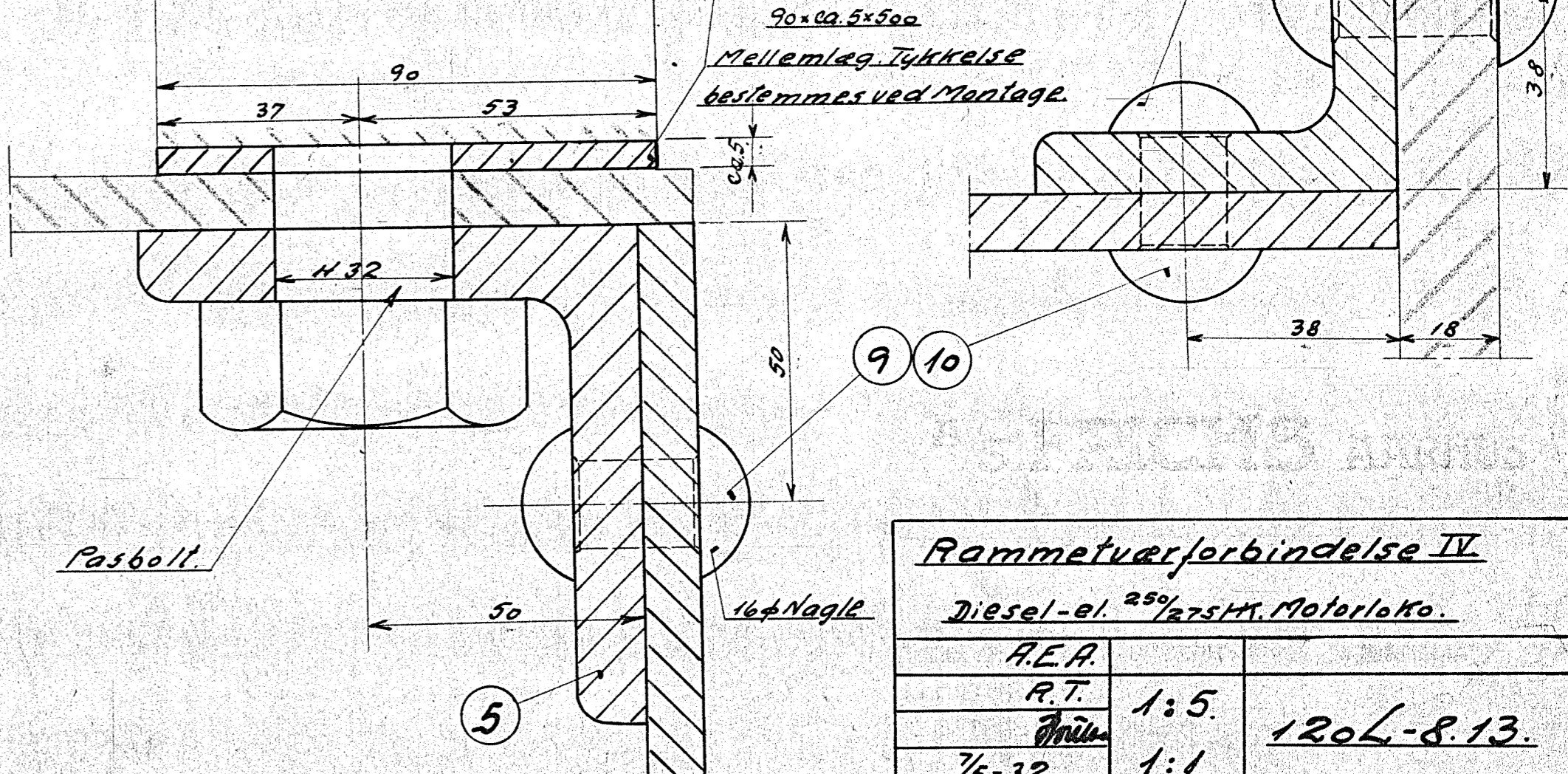
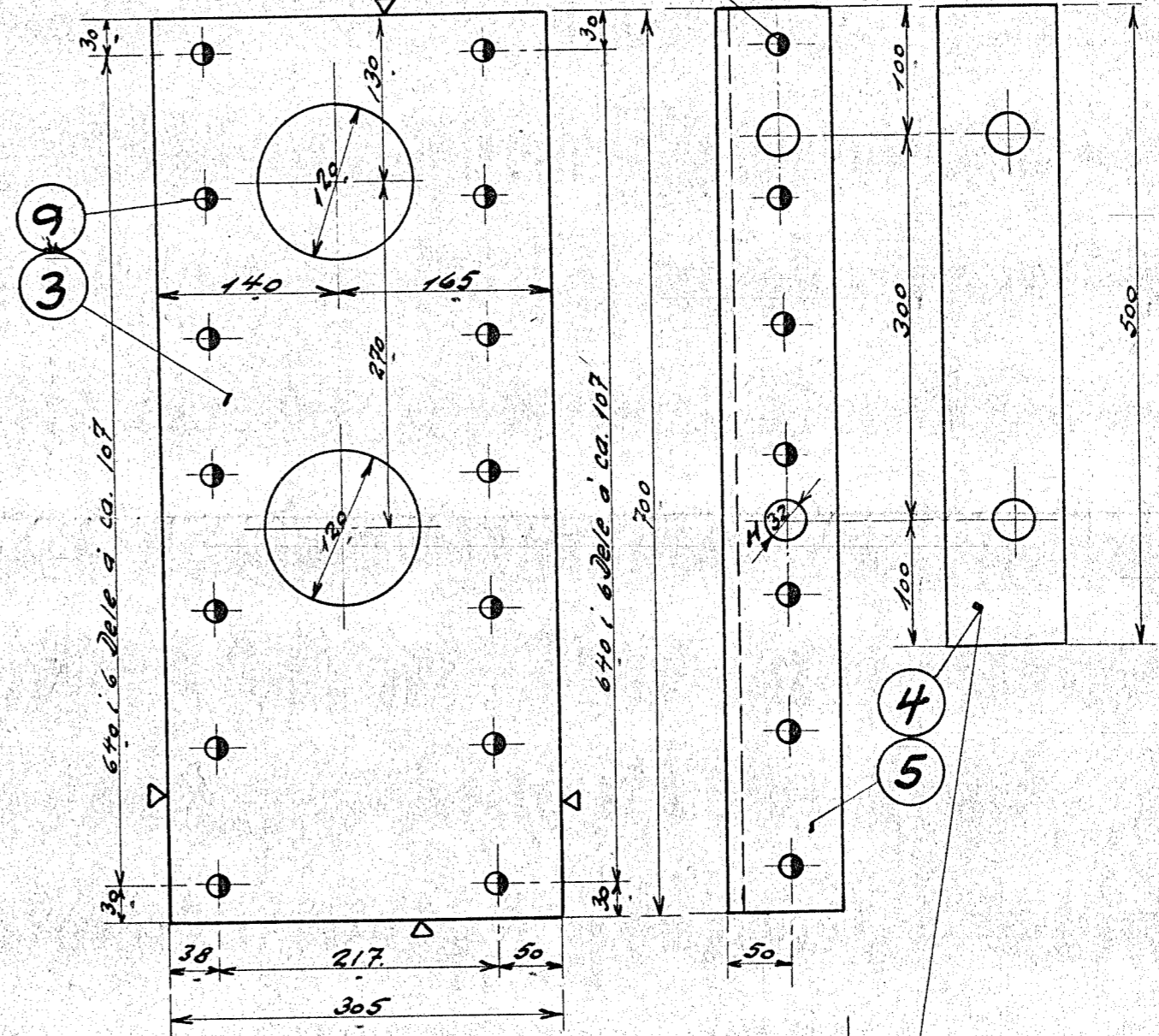
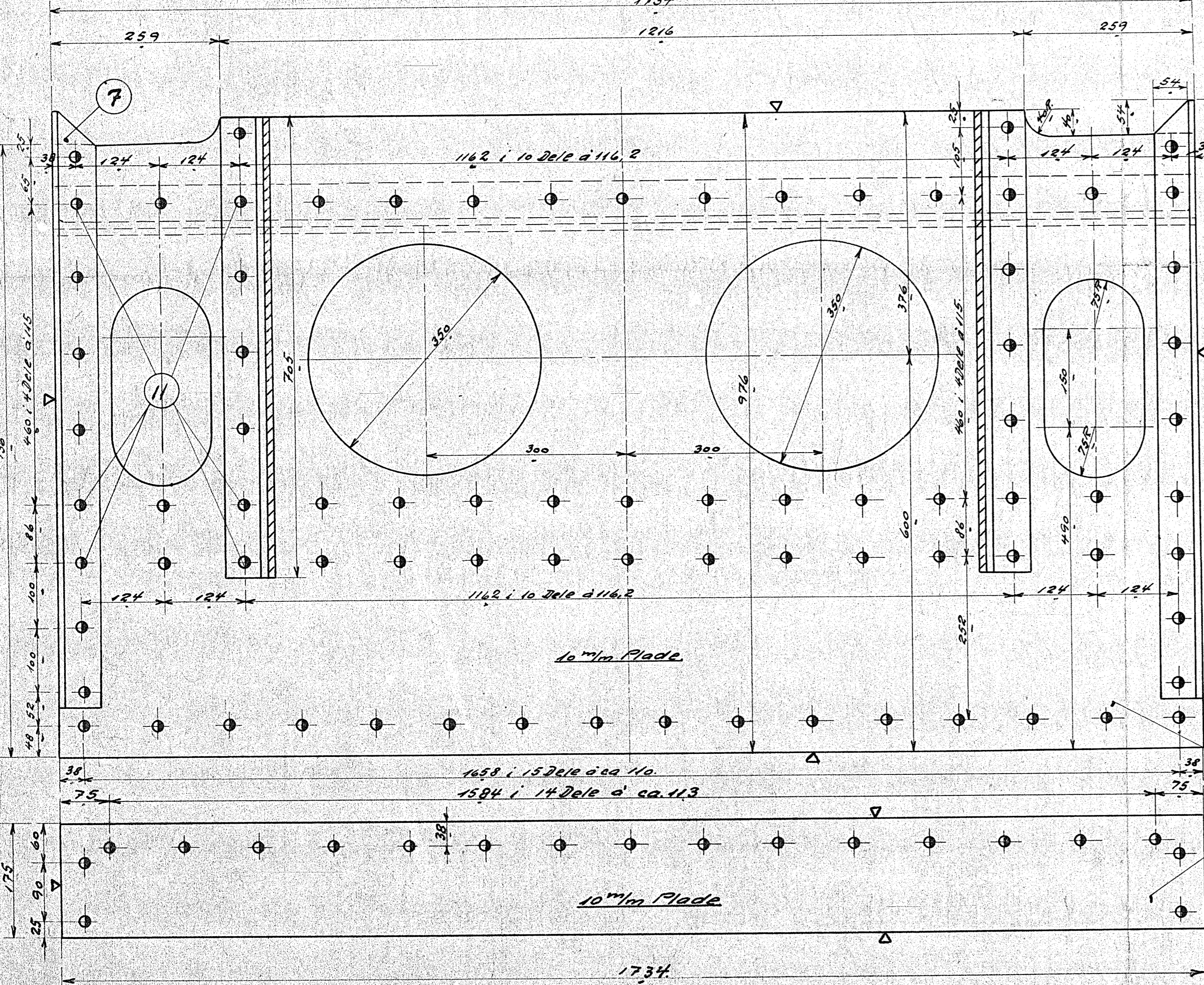


BETEGNELSE				
1	1	Plade	Fussy	1750x1000x10
2	1	do.	"	1750x200x10
3	2	do.	"	1450x320x10
4	2	Mellelag 500 lq.	"	100x8x10x20 x1420
5	2	Ligevinkel 700 "	"	190x90x13 x1420
6	2	do. " "	"	145x65x11
7	2	do. " " 915 "	"	1850 x2120
8	1	Vinkelramme	"	265x65x11
9	14	Nagler 16x48 Nitter	Best.	
10	10	do. " x 46 "	"	
11	12	do. " x 56 "	"	
12	16	do. 20x60 "	"	
13	6	do. 20x50 "	"	



58 Nagler opmærkes efter Plade. Teg. 120L-8-160.

Børes efter Ramme.



Rammeforbindelse IV		
Diesel-el. 250 72577. Motorloko.		
R.E.A.	1:5.	120L-8-13.
R.T.	1:1.	
7/5-32.	1:1.	