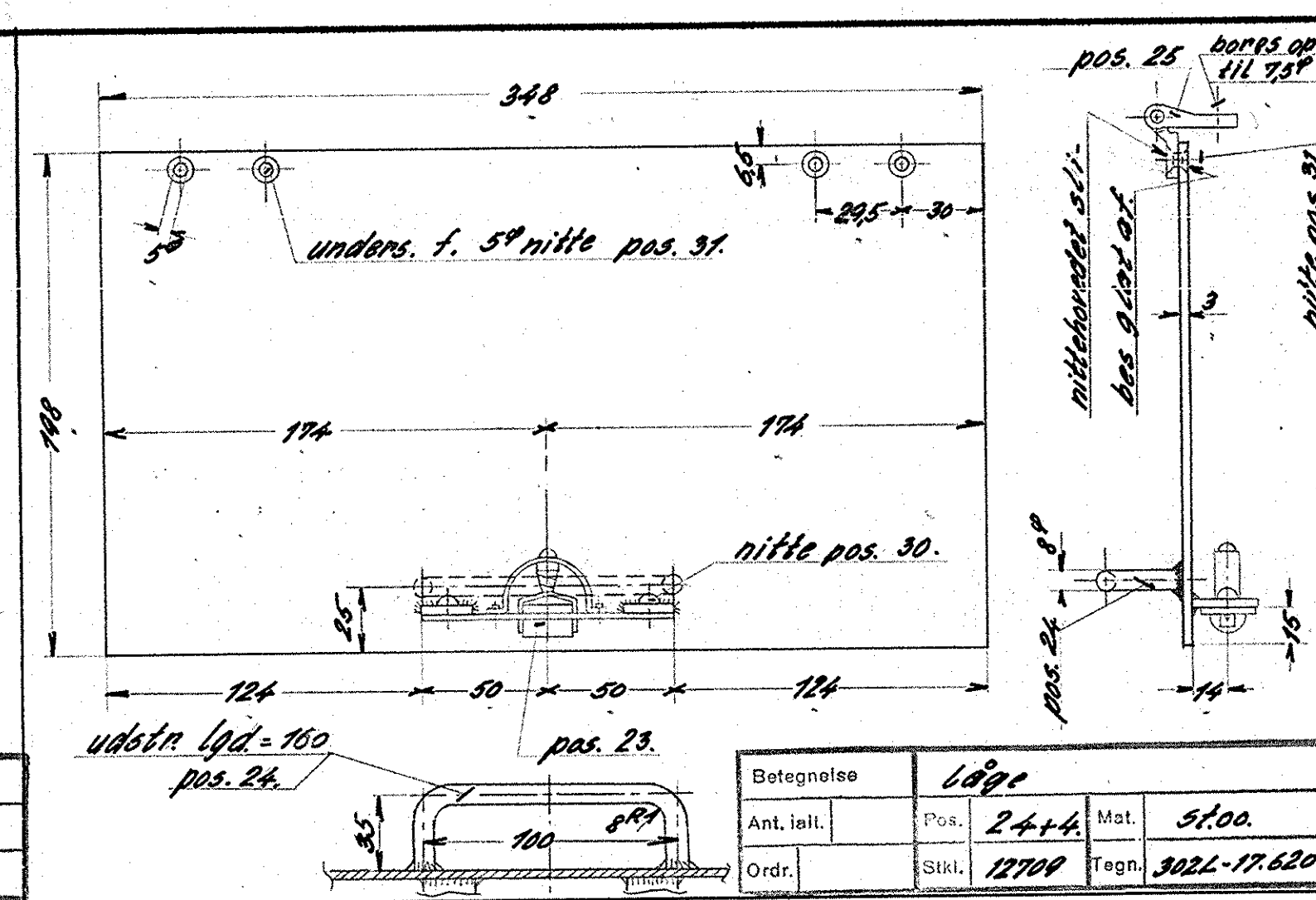
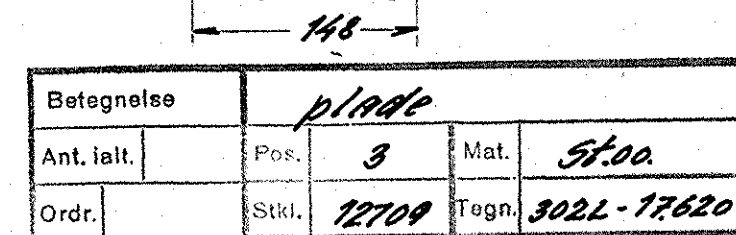
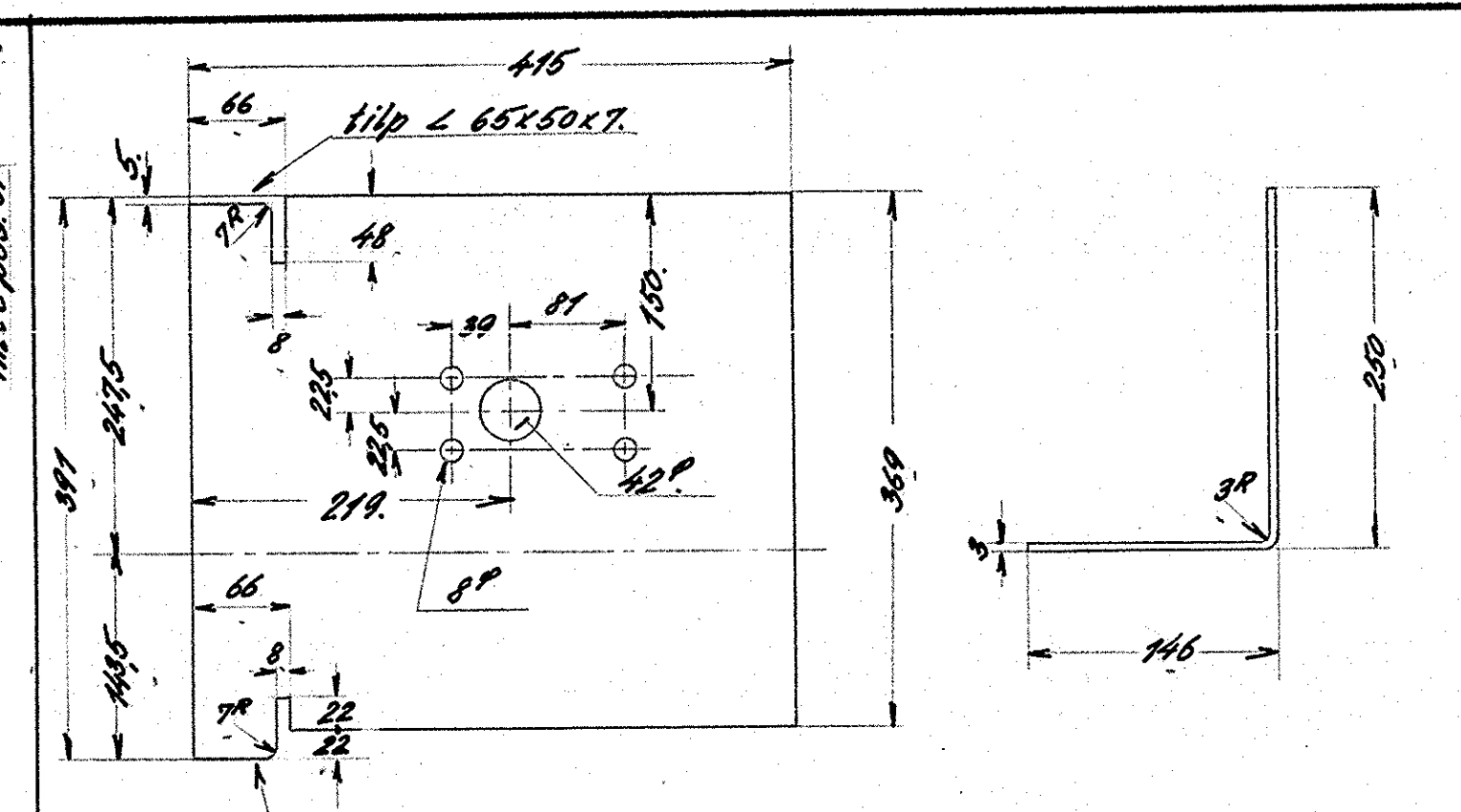


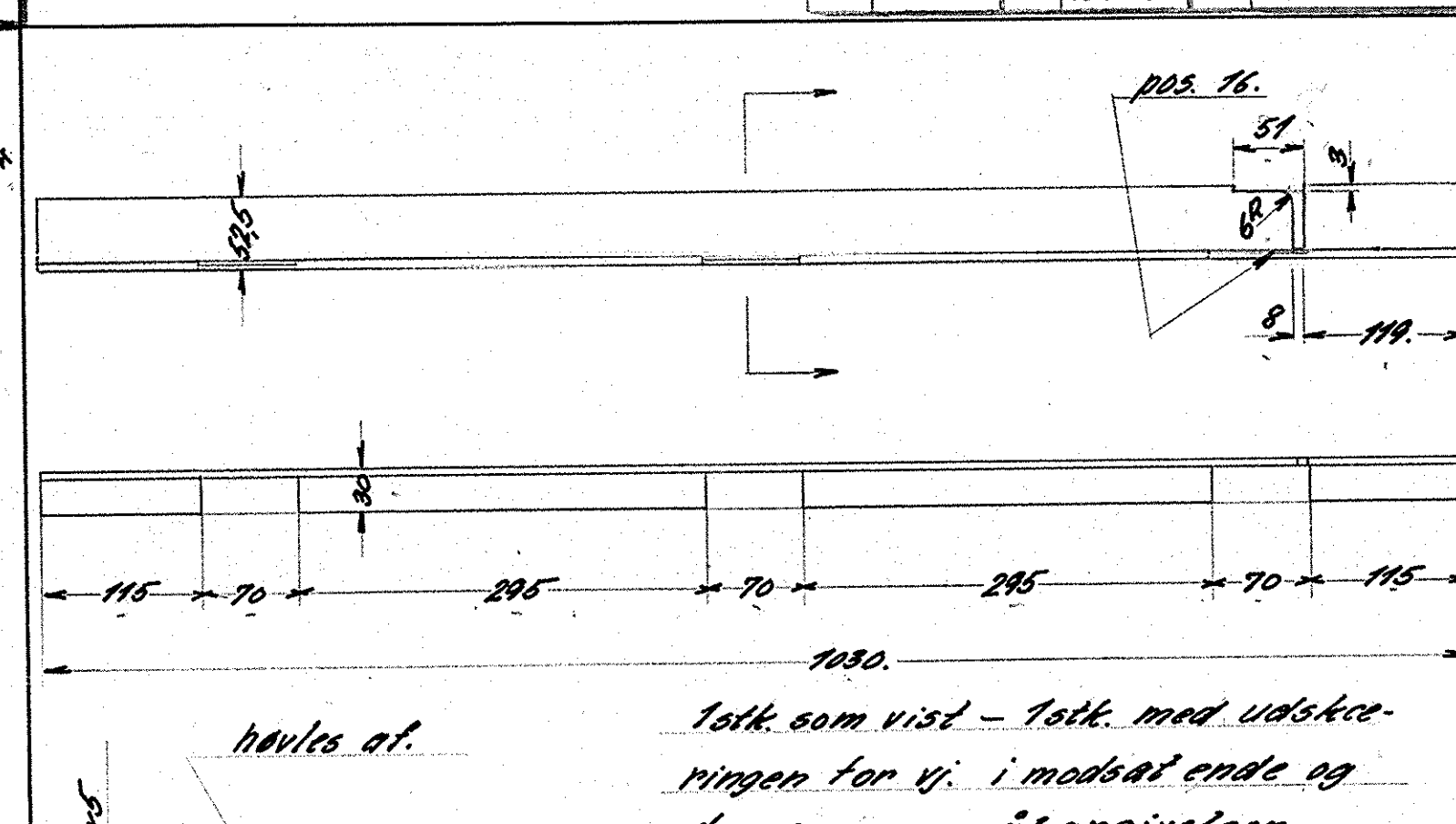
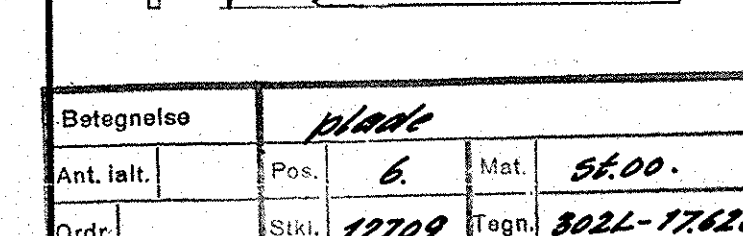
Betegnelse		<i>plade</i>	
Ant. løst.		Pos.	<i>2</i>
		Mat.	<i>st. 00.</i>
Ord.		Stkl.	<i>12709</i>
		Tegn.	<i>302L-17.620.</i>



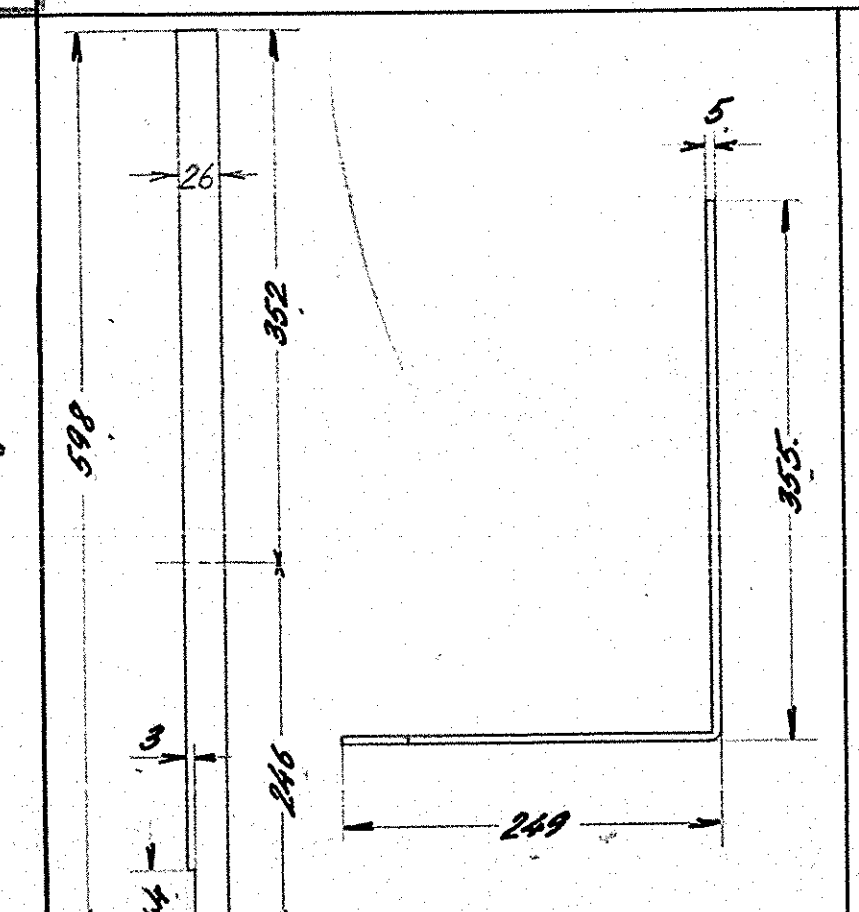
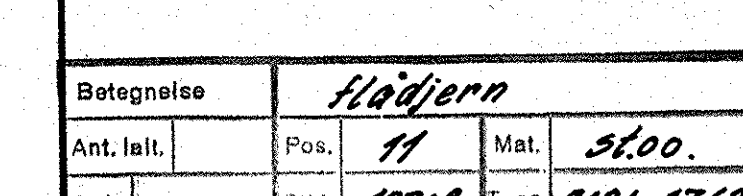
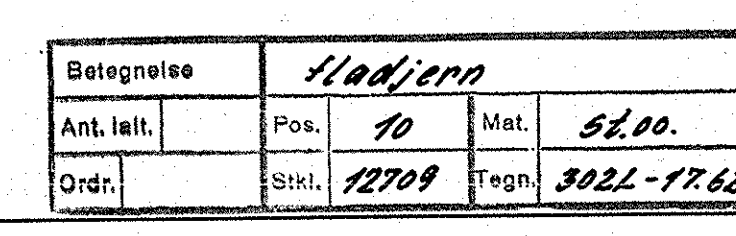
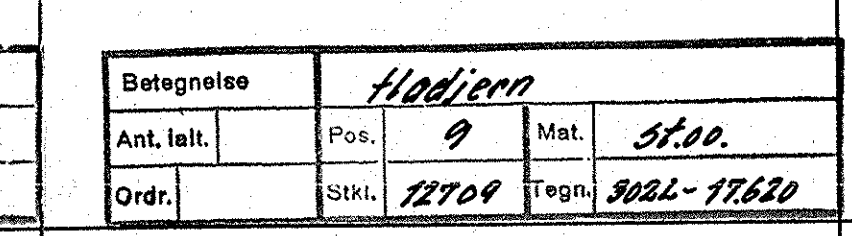
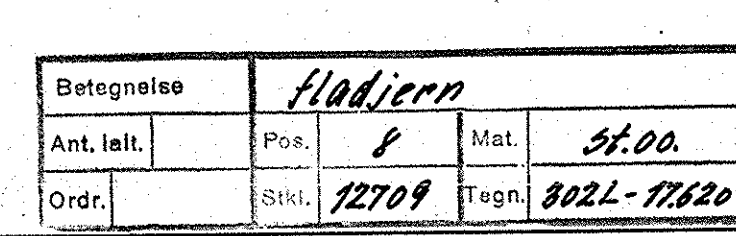
Betegnelse		Lag:	
Ant. i all.		Pos.	Mat. 5100.
Ordr.		Stkl.	12700 Tegn. 302L-17.620



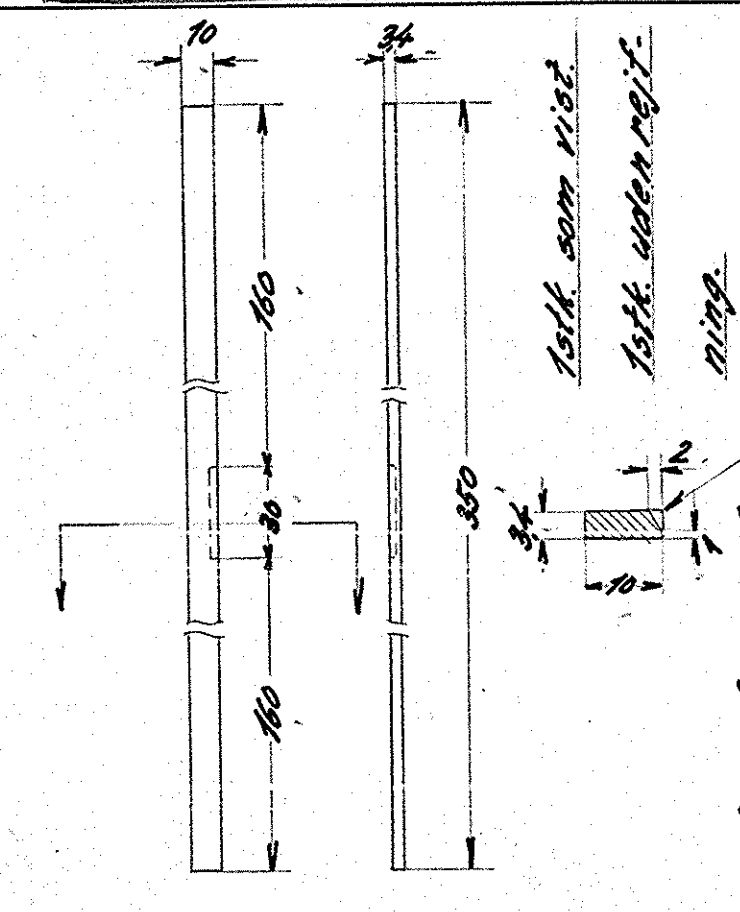
Betegnelse		<i>plade</i>	
Ant. i alt.	Pos.	<i>5</i>	Mat. <i>58.00</i>
Ordr.	Stkl.	<i>12709</i>	Tegn. <i>302L-17620</i>



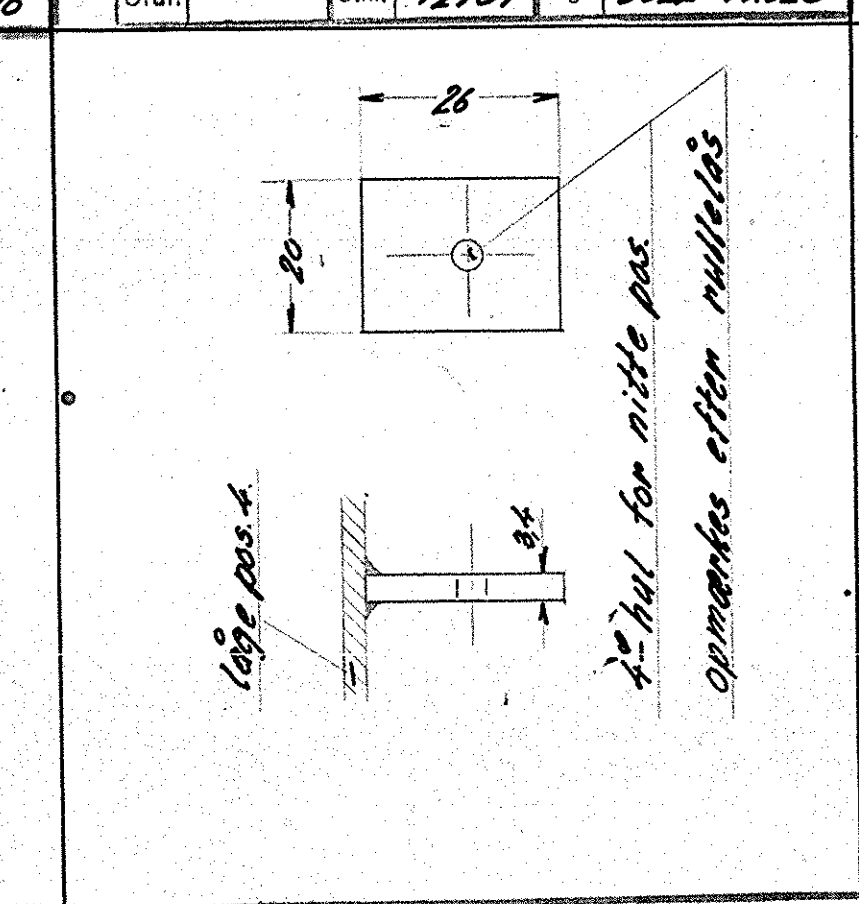
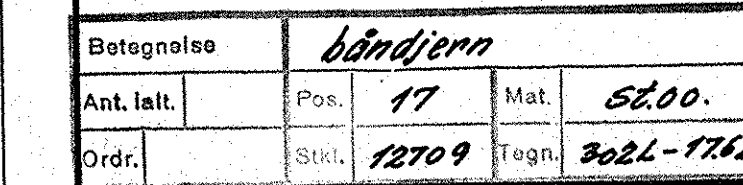
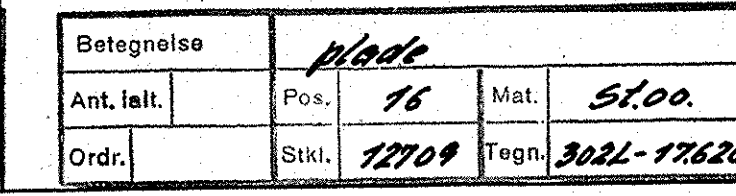
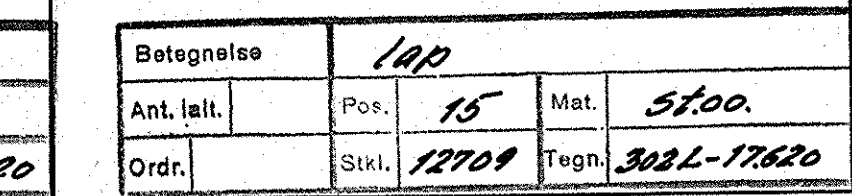
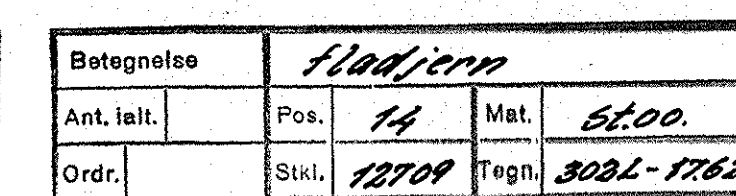
Betegnelse		<i>vinkeljern.</i>	
Ant. i alt.	Pos.	<i>7</i>	Mat. <i>32.00.</i>
Ordr.	Stk.	<i>12709</i>	Tegn. <i>302L-17620</i>



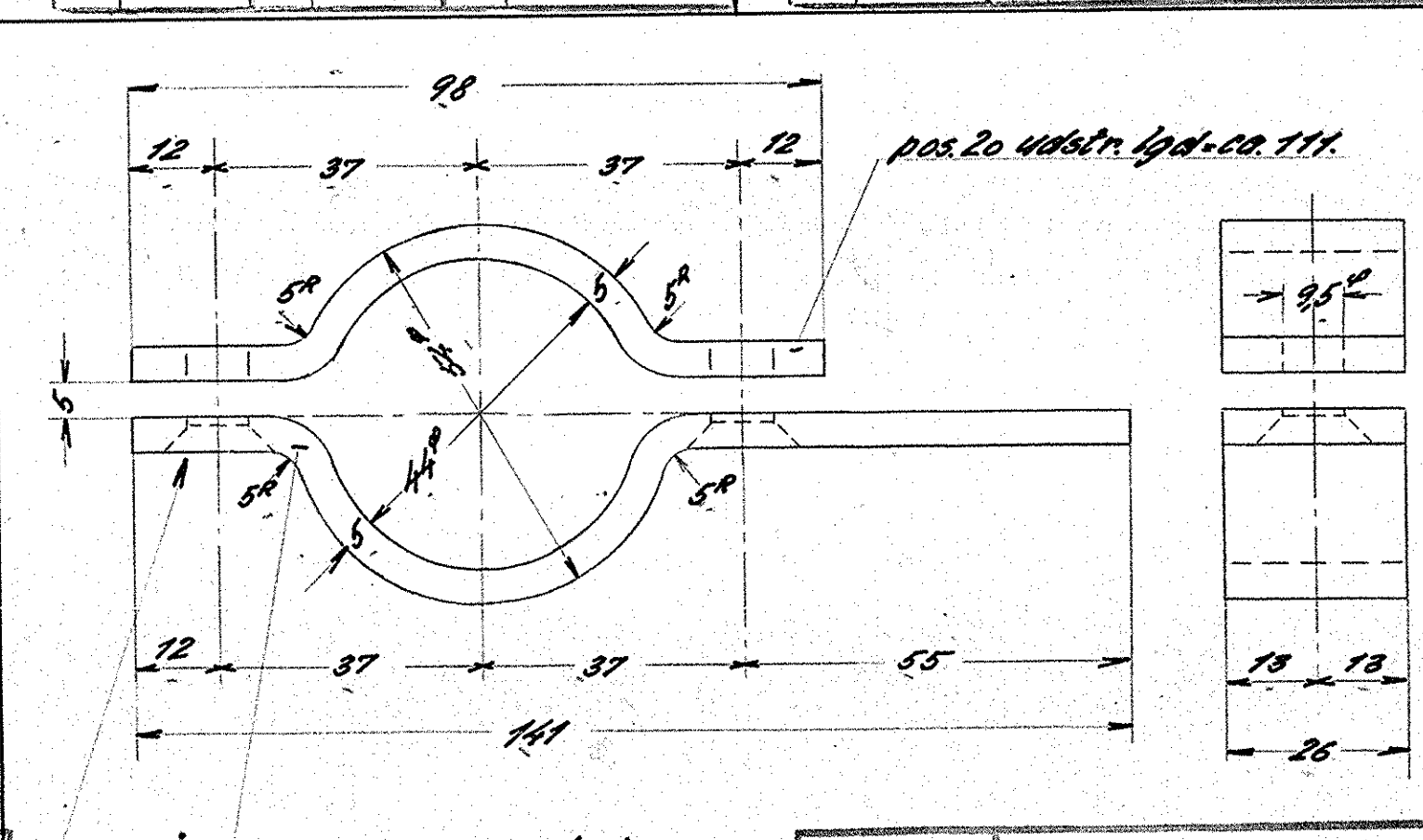
Betegnelse		Hadjern.	
Ant. ialt.	Pos.	12	Mat. 54.00.
Ordr.	Stkl.	17709	Tegn. 3021-11620



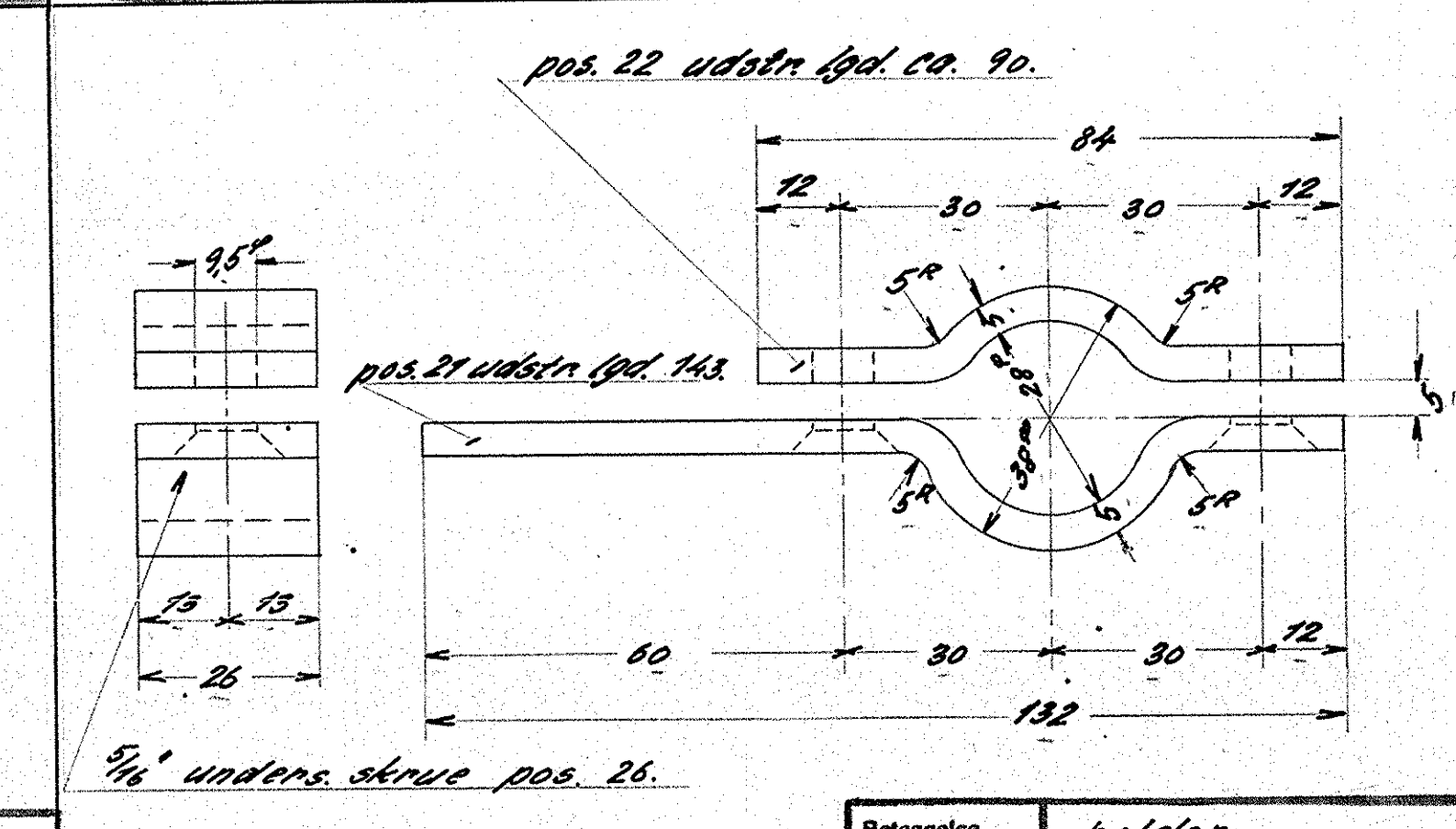
Betegnelse		<i>Hadjern</i>	
Ant. i alt.		Pos.	<i>13</i>
		Mat.	<i>5200.</i>
Ord.		Stkl.	<i>12709</i>
		Tegn.	<i>302L-1762</i>



Botegnelse		lap.	
Ant. i alt.	Pos.	Mat.	5200.
Ordre.	Stkl.	Tegn.	302L-17620



Betegnelse		<i>holder</i>	
Ant. ialt.		Pos. <i>19-20</i>	Mat. <i>5200.</i>
Ordr.		Stkl. <i>12709</i>	Tegn. <i>302L-176</i>



Ant. falt.	Pós.	Mat.
	21+22	54.00.
Ord.	Stkl.	Tegn.
	12700	302L-170

Stk.	Benævnelse	Pos.	Materiale krævet	Model nr. eller materiale størrelse	rd Vægt (kg)
4	1/2" Wt. mettnik	32	56.34	magasin.	
4	nitte m. unders. hv. 5/8" 13	31	—	magasin	
2	nitte m. halv. hv. 4/2" 10	30	56.34	—	
4	1/4" fjæderskive	29	61.51	—	
4	1/4" Wt. mettnik	28	56.34	—	
4	1/4" Wt. x 20 skrue m. halv. hv.	27	—	—	
4	1/2" Wt. x 20 skrue m. unders. hv. halvdelen af msk. 331	26	56.34	magasin.	
2	haagsel 50x50x5	25	massing	vindueoverkastet	
1	håndtag rundj. 8" x 160	24	56.00	8" x 170.	
1	rullebæls GFR nr. C 6085	23	56.	kæbes.	
1	del til holder fj. 26x5x90	22	56.00.		
1	— — — — — 26x5x148	21	—		
1	— — — — — 26x5x111	20	—		
1	del til holder fj. 26x5x169	19	—		
2	lapp. båndj. 26x34x20	18	—	bdf. 26x34x160.	
1	båndjern 20x34x45	17	—	bdf. 20x34x56.	
6	mellemløg	16	—	pl. 240x90x15	
6	lapp. fj. 16x65x20	15	—	fj. 16x65x150.	
2	båndjern 10x34x180	14	—	bdf. 10x34x380.	
2	båndjern 10x34x350	13	—	bdf. 10x34x720.	
1	fladjern 26x5x598	12	—	fj. 26x5x670.	
2	fladjern 50x8x150	11	—	fj. 50x8x320.	
2	fladjern 50x8x948	10	—	fj. 50x8x1190.	
2	fladjern 20x65x1030	9	—	fj. 20x65x2030.	
2	fladjern 50x8x1100	8	—	fj. 50x8x2220.	
2	vinkeljern 60x90x5x1030	7	—	vj. 60x30x5x2030.	
1	plade 3mm.	6	—		
1	— — — — —	5	—		
1	— — — — —	4	—		
2	— — — — —	3	—		
2	— — — — —	2	—		
2	plade 3mm.	1	56.00.		

FRICHS

Diesel-el.375 hk.loko.

Dele til skab i førerrum
til elektriske apparater.

12709.

302L-17.620.

Indeks:	1	2	3	4	5	6	7	8	9	10	11	12	13	14	15	16	17	18	19	20	21	22	23	24	25	26	27	28	29	30	31	32	33	34	35	36	37	38	39	40	41	42	43	44	45	46	47	48	49	50	51	52	53	54	55	56	57	58	59	60	61	62	63	64	65	66	67	68	69	70	71	72	73	74	75	76	77	78	79	80	81	82	83	84	85	86	87	88	89	90	91	92	93	94	95	96	97	98	99	100
---------	---	---	---	---	---	---	---	---	---	----	----	----	----	----	----	----	----	----	----	----	----	----	----	----	----	----	----	----	----	----	----	----	----	----	----	----	----	----	----	----	----	----	----	----	----	----	----	----	----	----	----	----	----	----	----	----	----	----	----	----	----	----	----	----	----	----	----	----	----	----	----	----	----	----	----	----	----	----	----	----	----	----	----	----	----	----	----	----	----	----	----	----	----	----	----	----	----	----	----	-----