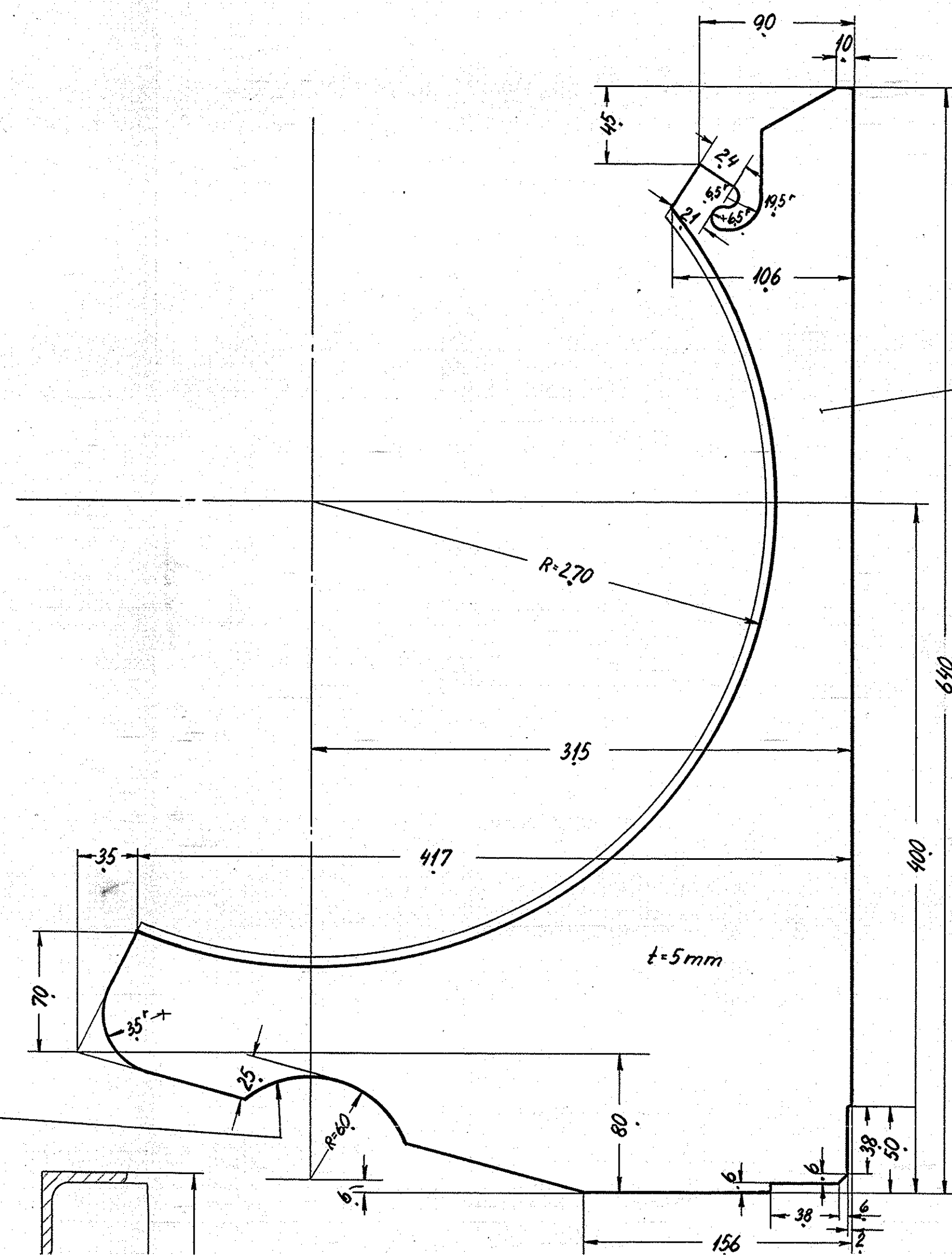
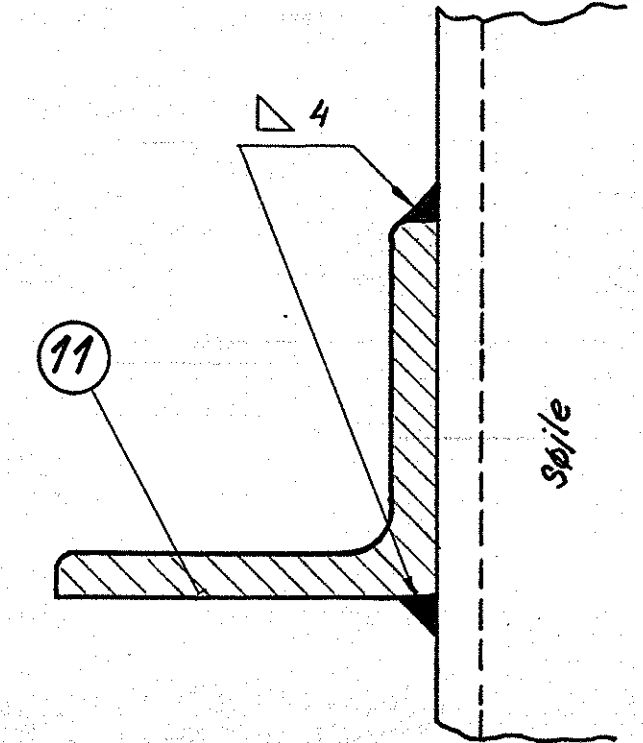
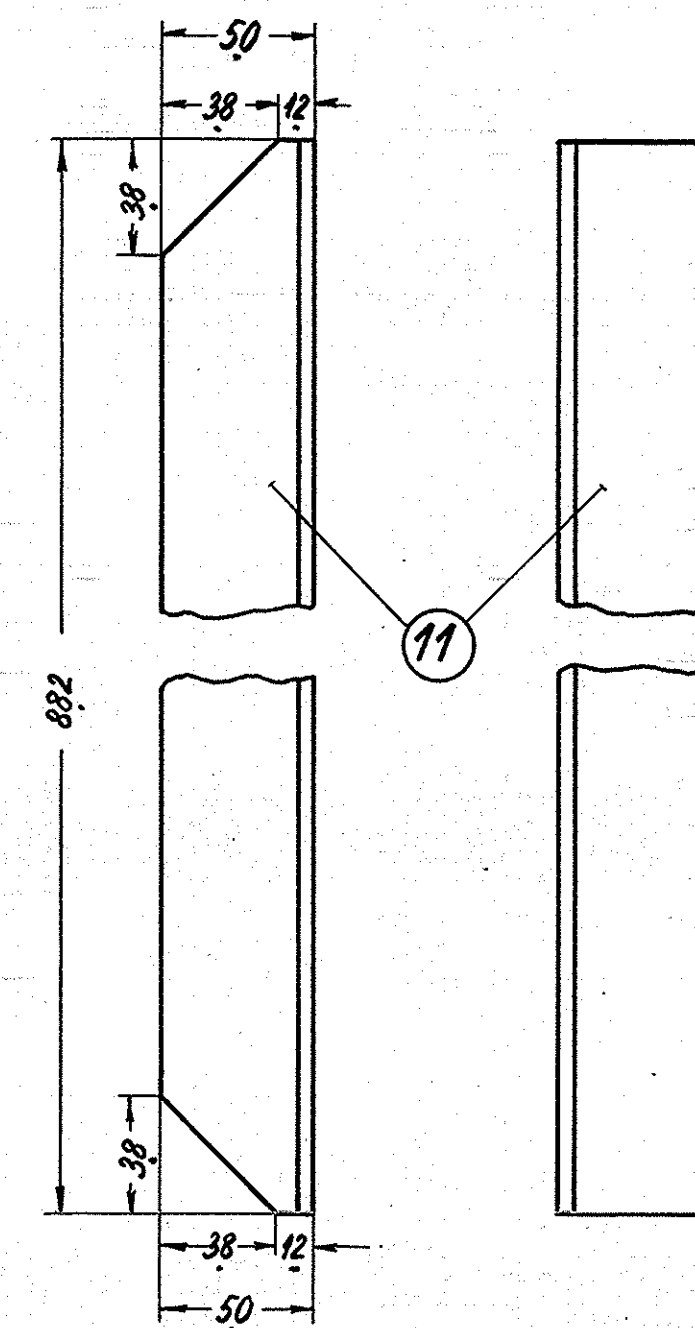


Denne udskæring kun i højre udførelse

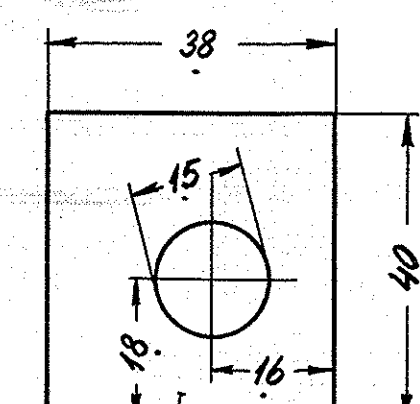
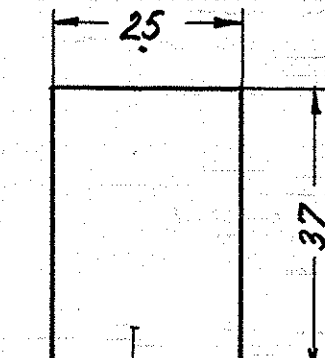
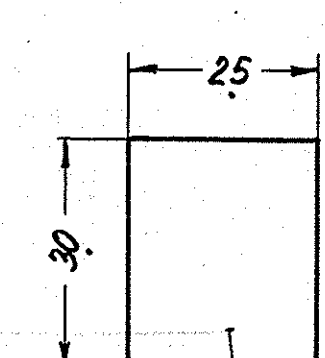
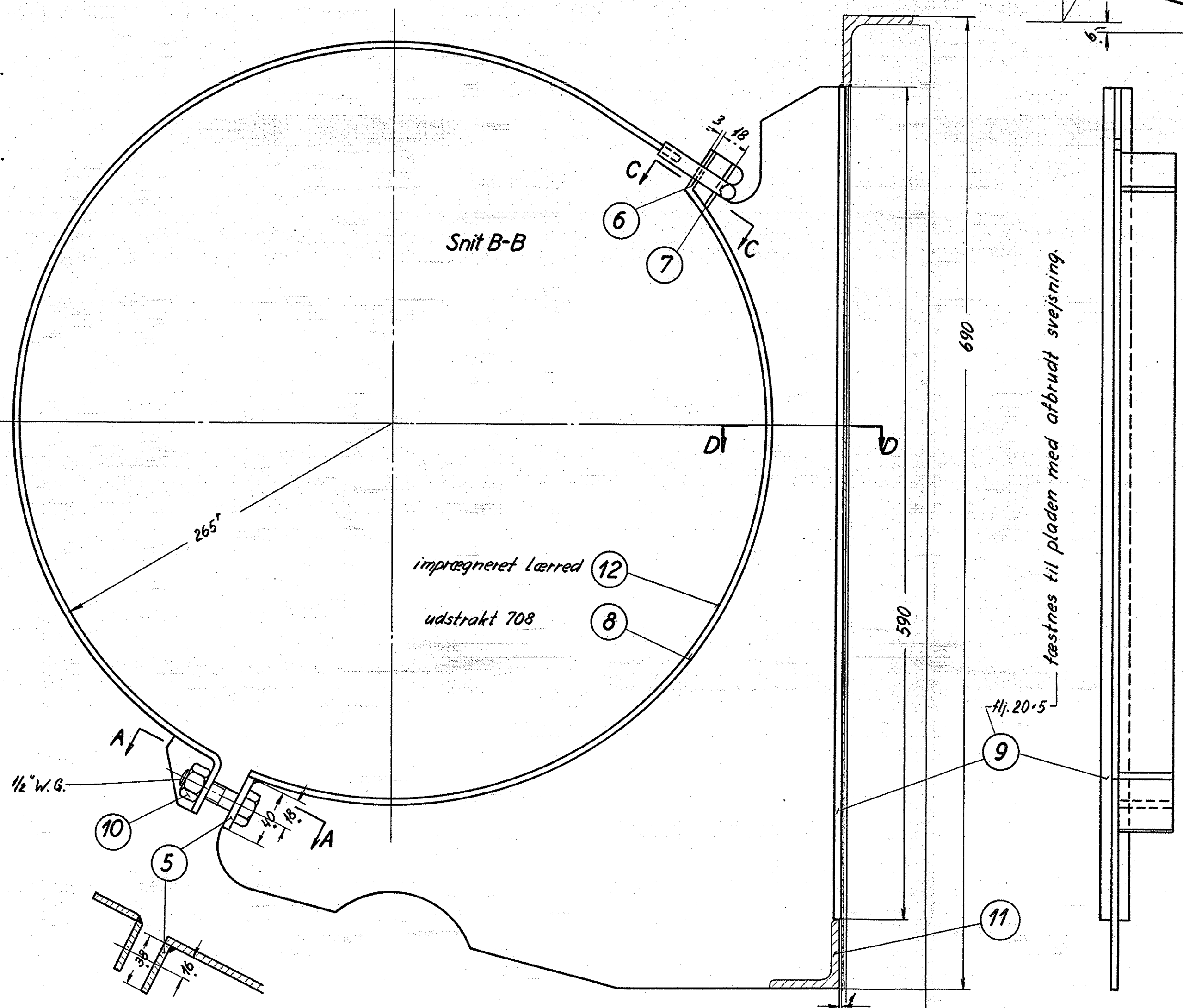
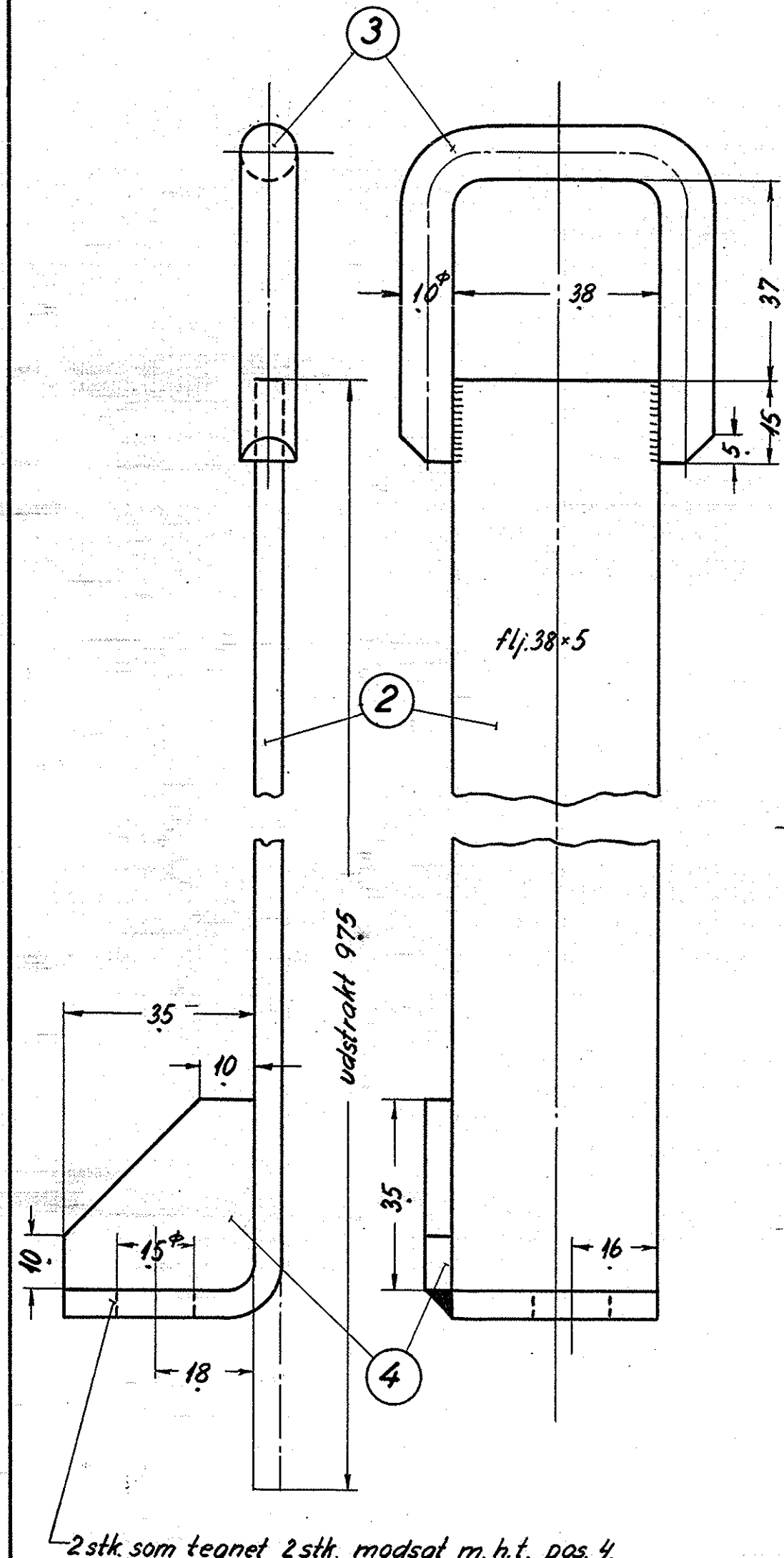


1 2 stk. højre og 2 stk. venstre m. h.t. påsvejsninger

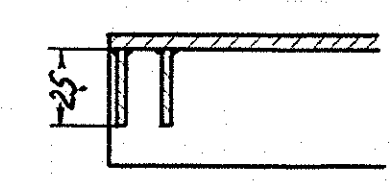
Svejsning ved søjler.



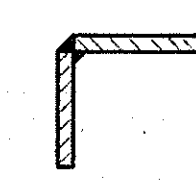
Vinkeljernet svejses fast til pladerne m. søjlerne ved afbrudt svejsning.



Snit C-C



Snit D-D



| | | | | | | | |
|---|-----------------------------|-----------|--------------------|-------------------------------------|--------|------------------|--|
| 4 | impregneret lærredsbånd | 12 | lærred | 50x06x7500 | | | |
| 2 | vinkeljern 50x50x5 | 11 | st. 37 | vj. 50x50x6x1770 | | | |
| 4 | bolt m. 6-kt. hv. 1/2" x 45 | 10 | st. 34 | magasin | | | |
| 4 | fladjern | 9 | st. 37 | flj. 20x5x2400 | | | |
| 4 | fladjern | 8 | " | flj. 38x5x2880 | | | |
| 4 | ribbe | 7 | " | flj. 25x3x180 | | | |
| 4 | " | 6 | " | flj. 25x3x160 | | | |
| 4 | " | 5 | " | flj. 38x5x200 | | | |
| 4 | ribbe | 4 | " | flj. 38x5x180 | | | |
| 4 | øksen | 3 | " | 10" x 660 | | | |
| 4 | spændebånd | 2 | " | flj. 38x5x3960 | | | |
| 4 | konsolplade | 1 | st. 37 | 1100x670x5 | | | |
| Stk. | Betegnelse | Pos. | Materiale kvalitet | Model nr. eller materiale størrelse | nr | færdig vægt/stk. | |
| Tegn. | H.M.P. 11-3-52 | Rev. | E.P. 16/10-52 | Afd. | II L | | |
| Kalk. | R.S. 16-10-52 | Norm. | | Dato | | | |
| Dato | 13/5-52 | Rettelser | | Pos. H. tilføjet | Indeks | | |
| | | | | | | | |
| Anvendelse | | | | Stykliste nr. | | | |
| Diesel-el. 750 hk.loko. | | | | 9562 | | | |
| Tegningens benævnelse | | | | Tegningens nummer | | | |
| Ophængning af 180 l. kølevandsbeholder. | | | | 301L-16.030. | | | |
| | | | | Indeks: A | | | |

FRICHS