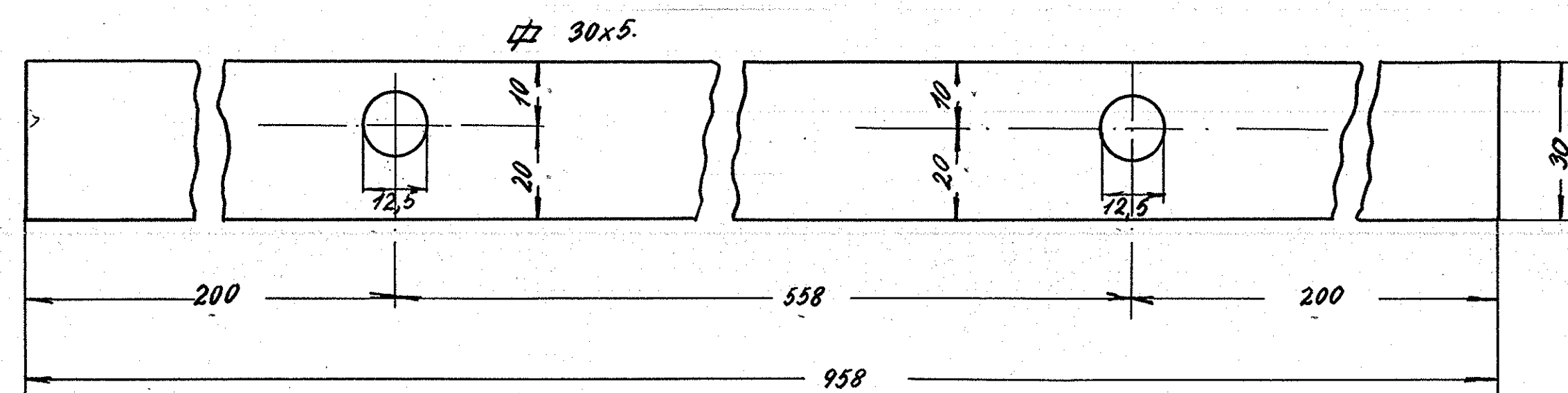
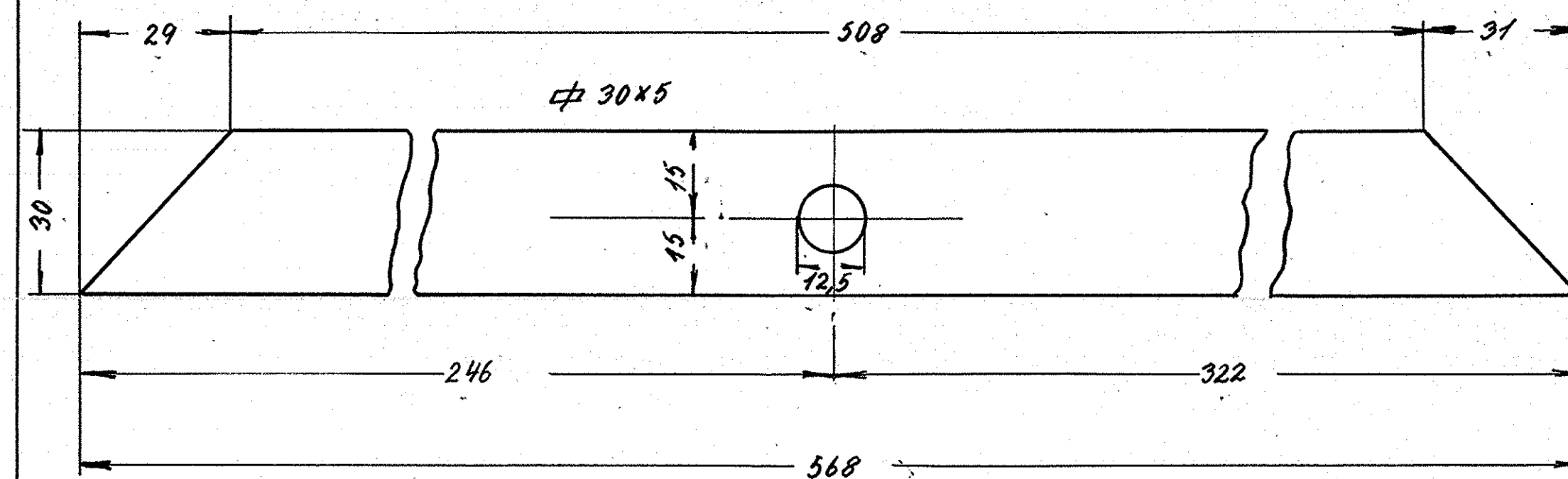


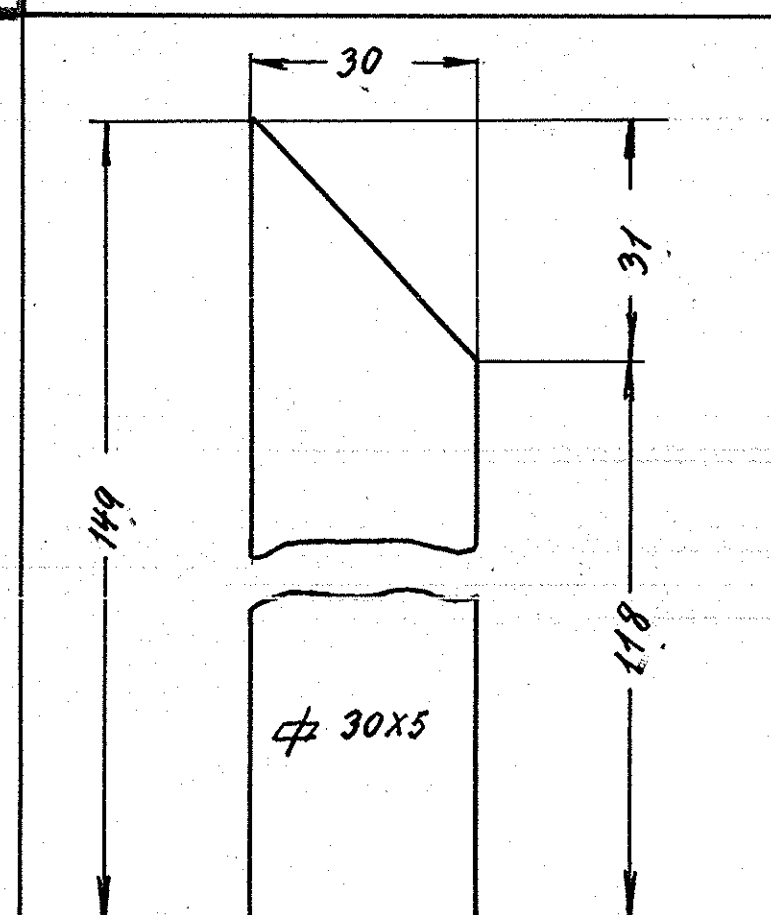
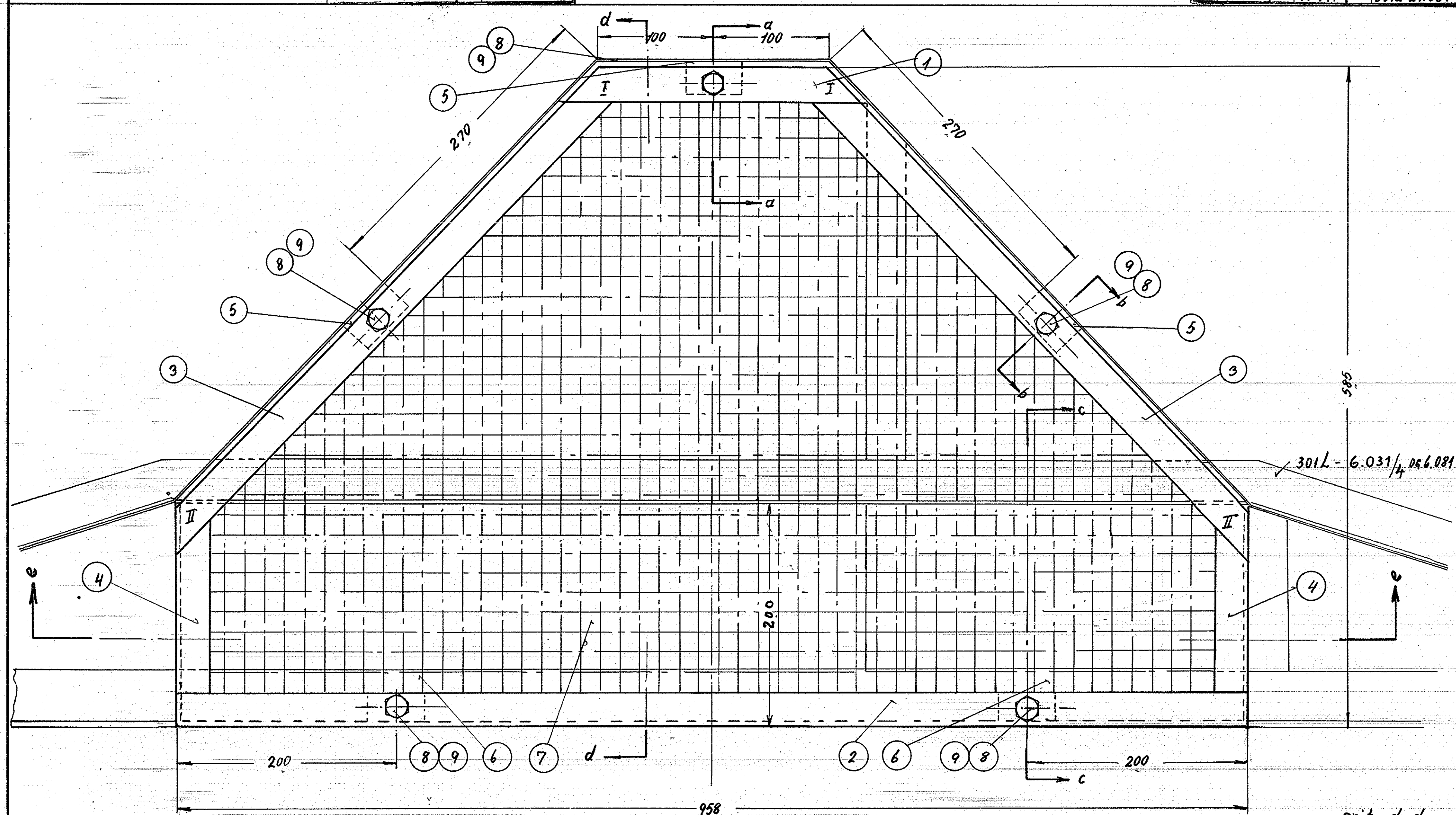
Betegnelsen	fladjern	1:1
Ant. i alt.	1	Mat. st. 37
Ordr.	9544	Tegn. 301L-21.589



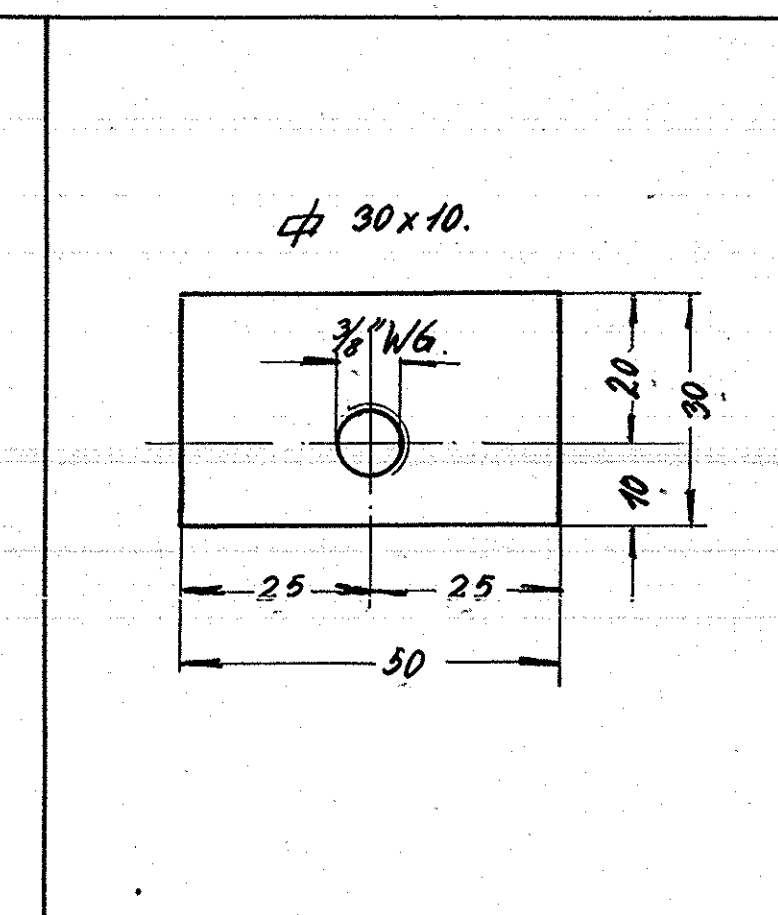
Betegnelsen	fladjern	1:1
Ant. i alt.	2	Mat. st. 37
Ordr.	9544	Tegn. 301L-21.589



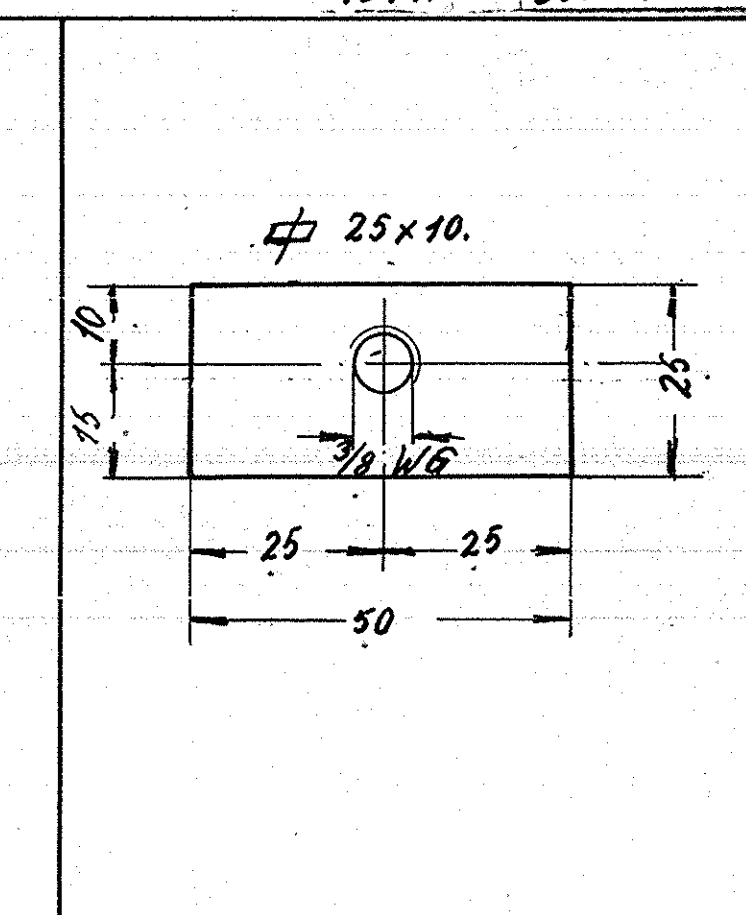
Betegnelsen	fladjern	1:1
Ant. i alt.	3	Mat. st. 37
Ordr.	9544	Tegn. 301L-21.589



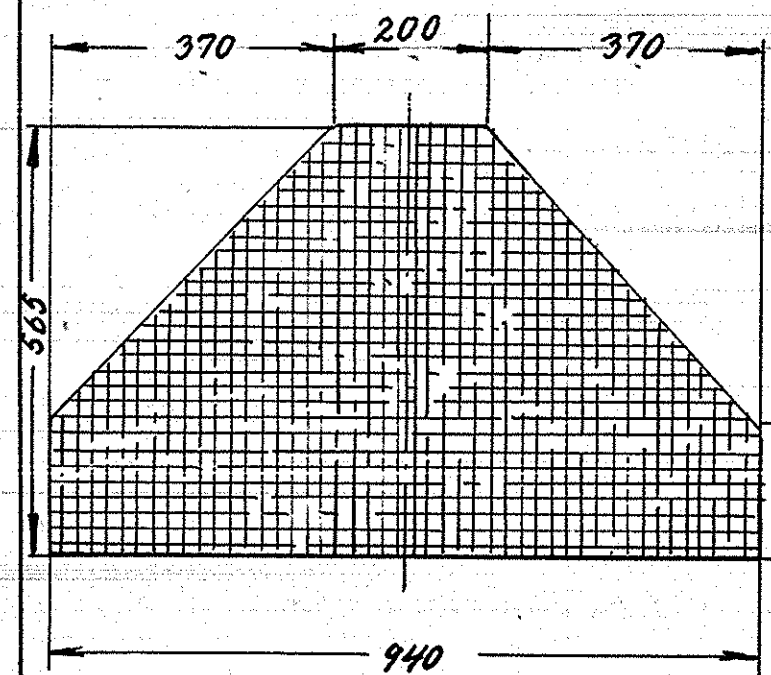
Betegnelsen	fladjern	1:1
Ant. i alt.	4	Mat. st. 37
Ordr.	9544	Tegn. 301L-21.589



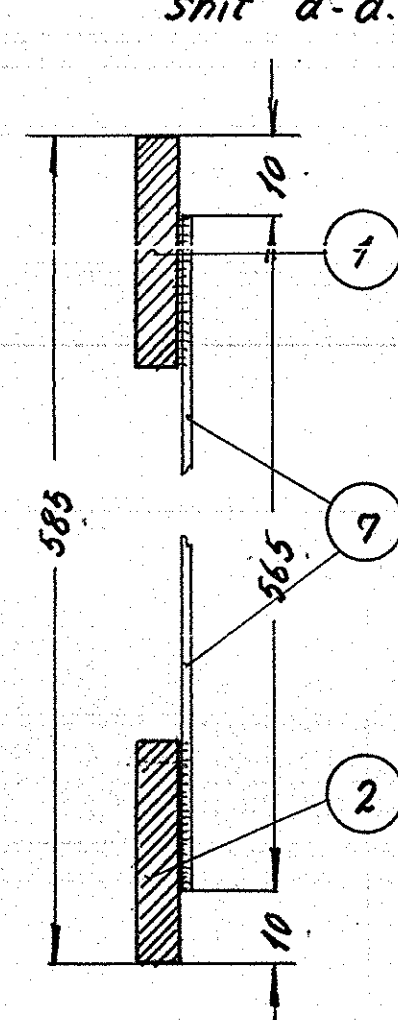
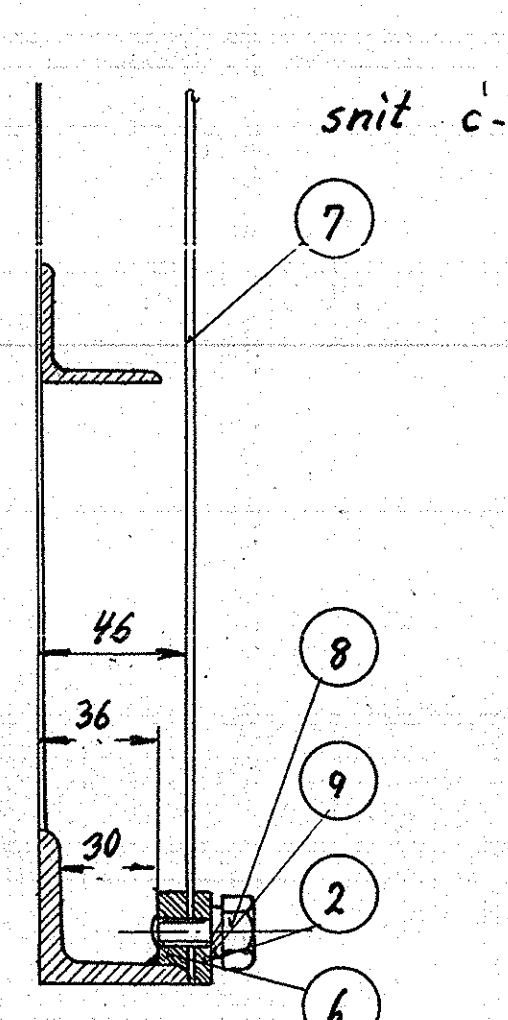
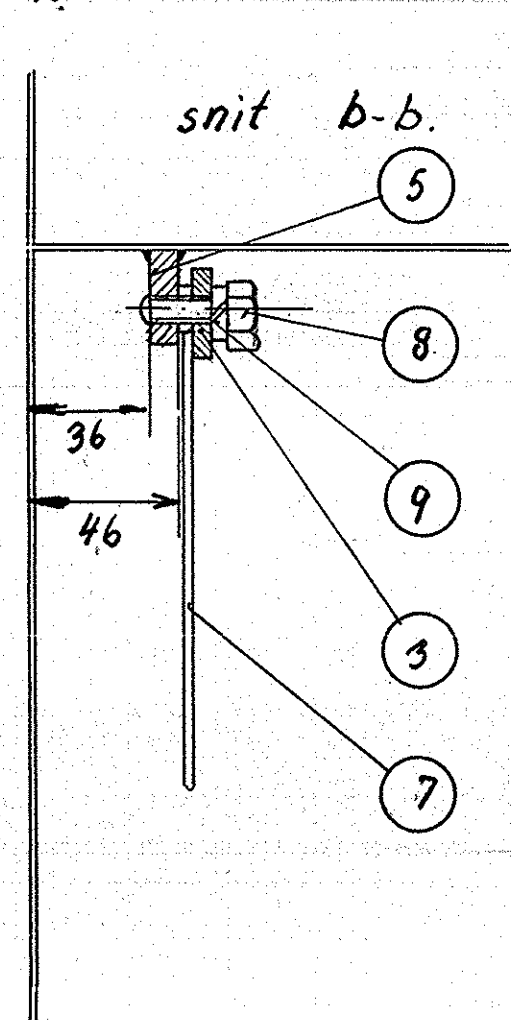
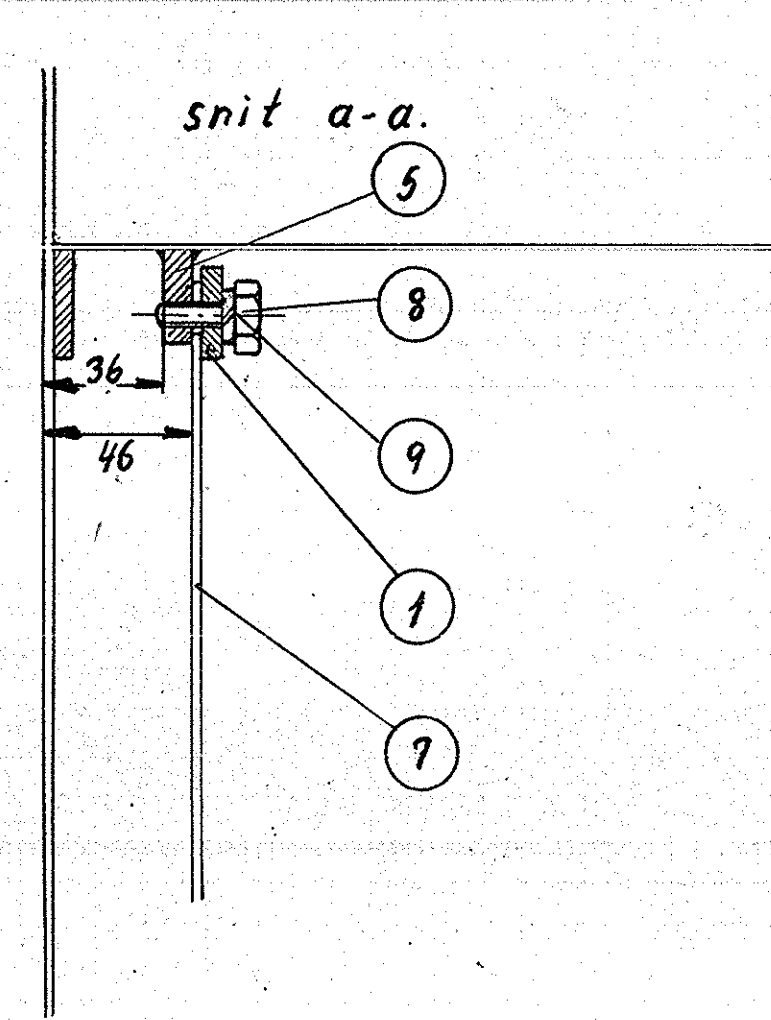
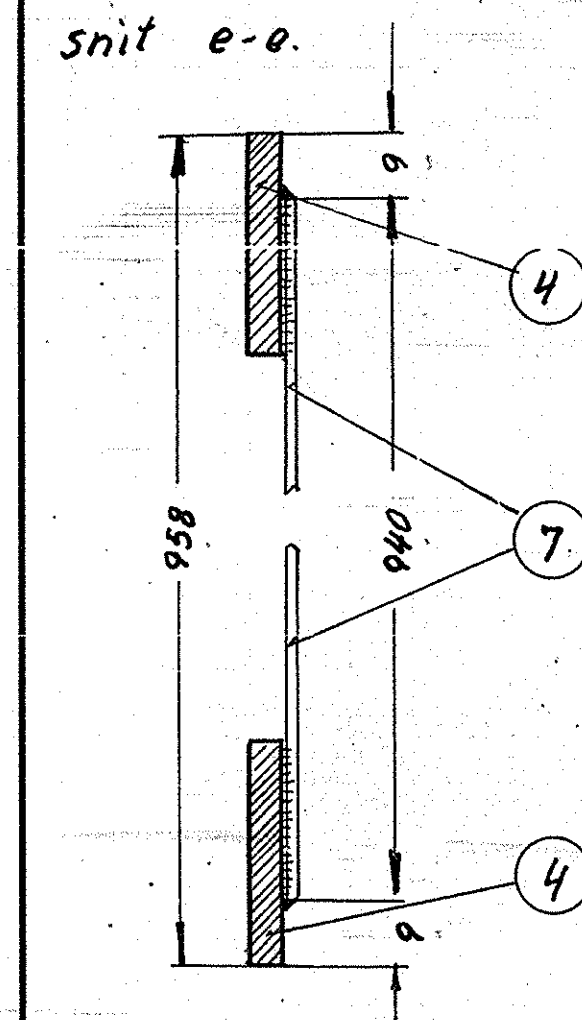
Betegnelsen	fladjern	1:1
Ant. i alt.	5	Mat. st. 37
Ordr.	9544	Tegn. 301L-21.589



Betegnelsen	fladjern	1:1
Ant. i alt.	6	Mat. st. 37
Ordr.	9544	Tegn. 301L-21.589



Betegnelsen	grusharperæv	1:1
Ant. i alt.	7	Mat. -
Ordr.	9544	Tegn. 301L-21.589



10 fjerderst	3/8	9 fjerderst	magasin		
10 skrue	3/8" W6x20	8 st. 34			
2 grusharperæv	galv 1 1/2 maskelp	7	~	940 x 1200	
4 laske		6 st. 37	flj. 25x10x220		
6 laske		5	"	flj. 30x10x330	
4 fladjern		4	"	flj. 30x6,5x675	
4 fladjern		3	"	flj. 30x6,5x2300	
2 fladjern		2	"	flj. 30x6,5x1990	
2 fladjern		1	st. 37	flj. 30x6,5x520	
Stk.	Betegnelsen	Pos.	Materiale	Model nr. eller	rå færdig
			kvalitet	materiale størrelse	vægt/stk.
Tegn. C.W. 134-52	Rev. 2/72	22/333	Ald. 7/1		
Kalk. M. 12-2-53	Norm.		Dato		
Dato	Retelse		Indeks		
			Målestok:	1:2,5	1:1
			FRICHS		
			Anvendelse	Stykliste nr.	
			Diesel-el. 750 hk. loko.	9544.	
			Tegningens benævnelse	Tegningens nummer	
			Trædvæv i luftkanalåbning i generatorrum.	301L-21.589.	
			Indeks:		