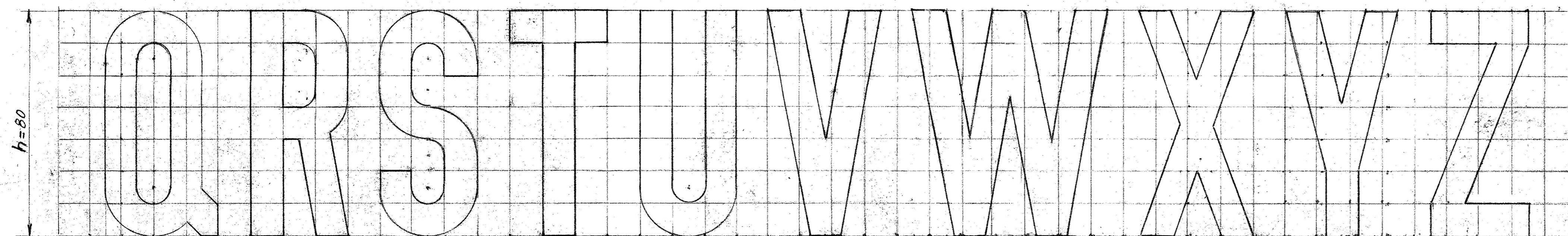
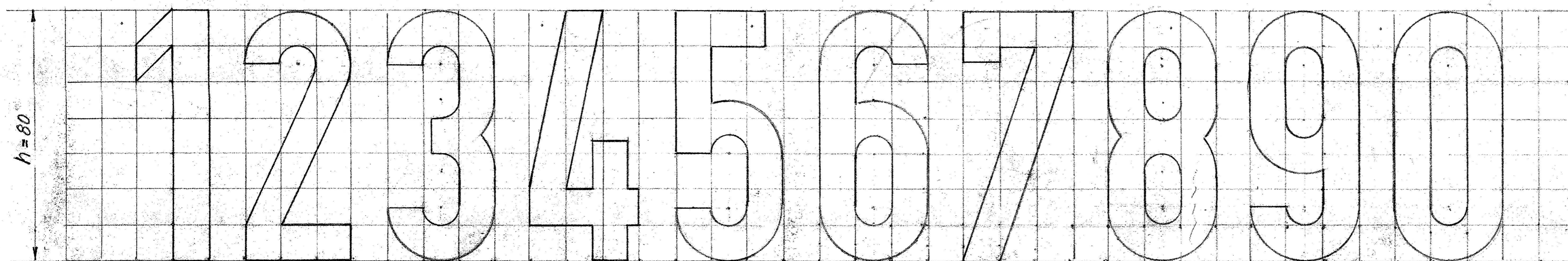


$\frac{4}{7}h$     $\frac{1}{2}h$     $\frac{3}{7}h$

$\frac{1}{7}h = 11,43\text{mm}$



$3,5/7h$     $\frac{1}{2}h$     $\frac{3}{7}h$



$\frac{2}{7}h$     $\frac{1}{2}h$     $\frac{3}{7}h$

Sk.	Genstand	Pos. nr.	Tegn. nr.	Materiale	Model ell. Lager nr.
Forandringer					
<b>Danske Statsbaner</b> Maskinafdelingen				Målestok 1:1	Tegn. 14-65 PBL Rev. JVL Godk. Kalk.
Normalbogstaver Store bogstaver og tal, højde 80 mm. til vogne m.v.				1.NG.15.290	